



# TAYLOR FARM ALL WHEEL PARK



**HILRIDE**  
Progression Development Group



  
**TIMMONS GROUP**  
ENGINEERING | DESIGN | TECHNOLOGY

**HENRICO  
RECREATION &  
PARKS**



# Meeting Agenda:

9/29/2021, 5:30-7 pm

Zoom Best Practices

---

Introductions

---

Master Plan Overview

---

Project Timeline

---

**Active Sports Area**



# Zoom Best Practices

- The meeting is being recorded.
- Remain muted unless speaking.
- Use the Chat box to post comments and questions during the presentation and while others are speaking.
- We'll have an open discussion at the close of the presentation.

# Zoom Best Practices

Recording... || ■



Participants (2)

- Trevor Buckley (Co-host, me) [mute] [video off]
- Scott Wiley (Host) [mute] [video off]

Invite Mute All ...

Chat

Unmute Start Video



Participants 2 Chat



Share Screen Pause/Stop Recording Breakout Rooms Reactions Apps



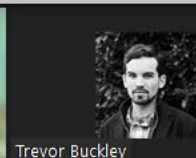
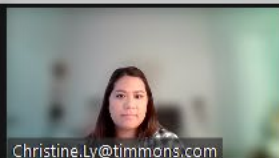
To: Everyone

Type

- Everyone (in Meeting)
- Scott Wiley (Host)

Leave





# TAYLOR FARM ALL WHEEL PARK



**HILRIDE**  
Progression Development Group



**TIMMONS GROUP**  
ENGINEERING | DESIGN | TECHNOLOGY

**HENRICO  
RECREATION &  
PARKS**

## Participants (2)

- Christine.Ly@timmons.... (Host, me)
- Trevor Buckley (Co-host)

Invite

Mute All



## Chat

Who can see your messages?

To: Everyone

Type message here...

# Introductions





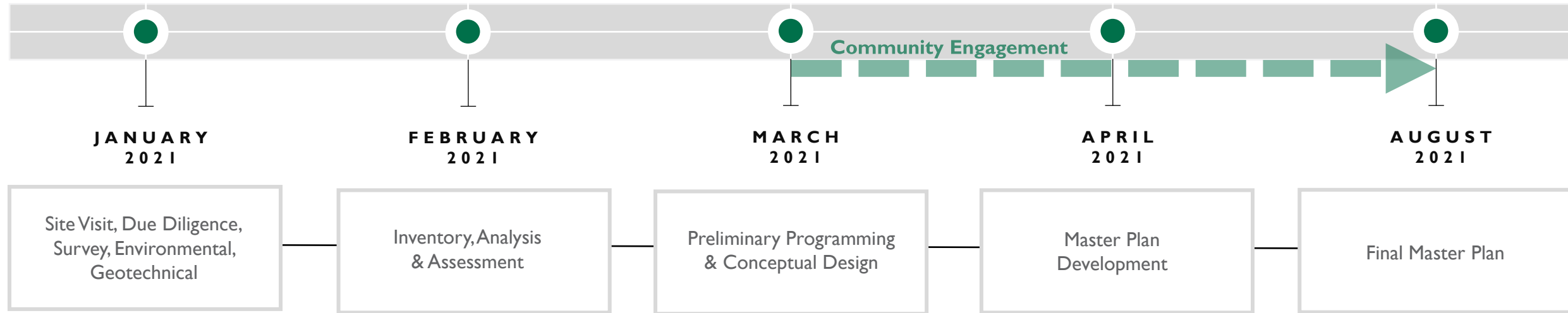
# Master Plan Concept



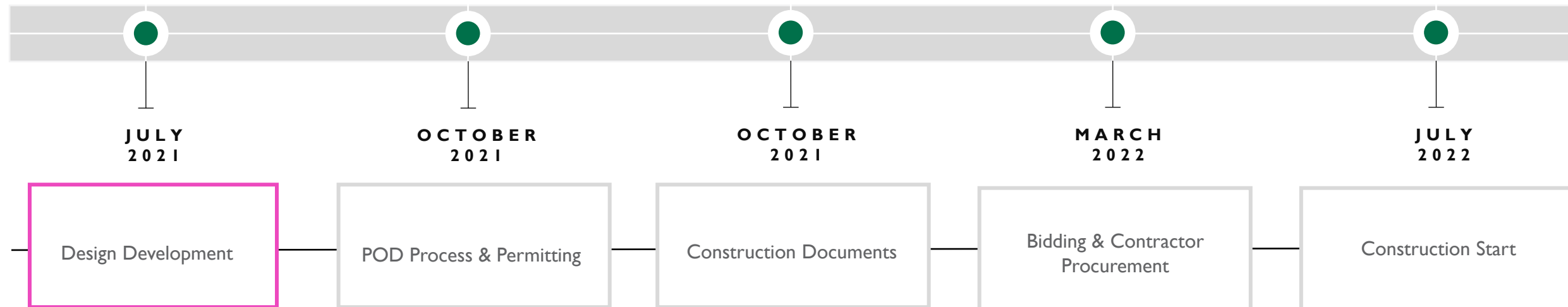


# PROJECT SCHEDULE

## PHASE I – MASTER PLANNING



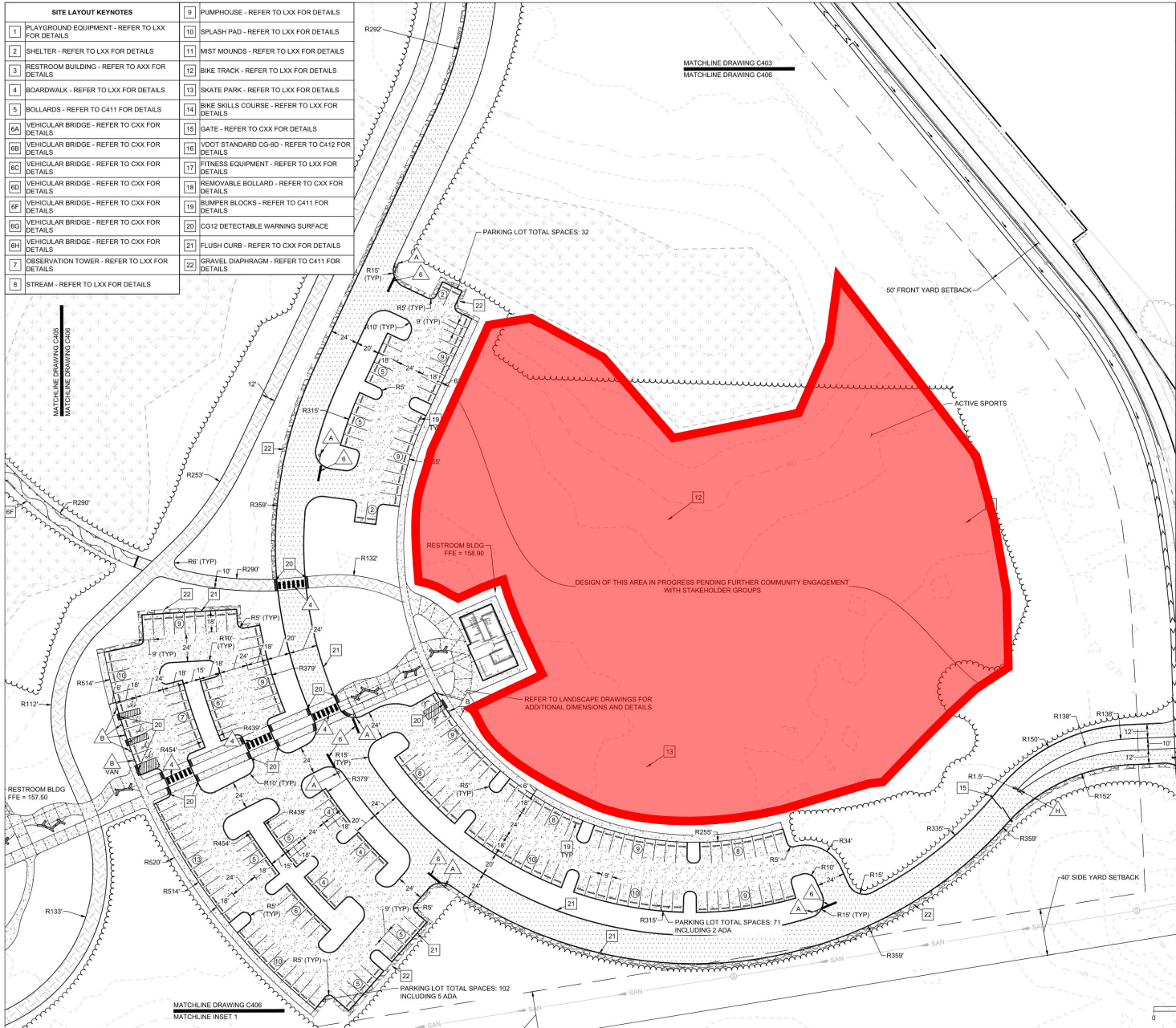
## PHASE II – CONSTRUCTION DESIGN & ADMINISTRATION



WE ARE HERE!



SITE LAYOUT KEYNOTES	
1	PLAYGROUND EQUIPMENT - REFER TO LXX FOR DETAILS
2	SHELTER - REFER TO LXX FOR DETAILS
3	RESTROOM BUILDING - REFER TO AXX FOR DETAILS
4	BOARDWALK - REFER TO LXX FOR DETAILS
5	BOLLARDS - REFER TO C411 FOR DETAILS
6A	VEHICULAR BRIDGE - REFER TO CXX FOR DETAILS
6B	VEHICULAR BRIDGE - REFER TO CXX FOR DETAILS
6C	VEHICULAR BRIDGE - REFER TO CXX FOR DETAILS
6D	VEHICULAR BRIDGE - REFER TO CXX FOR DETAILS
6E	VEHICULAR BRIDGE - REFER TO CXX FOR DETAILS
6F	VEHICULAR BRIDGE - REFER TO CXX FOR DETAILS
6G	VEHICULAR BRIDGE - REFER TO CXX FOR DETAILS
6H	VEHICULAR BRIDGE - REFER TO CXX FOR DETAILS
7	OBSERVATION TOWER - REFER TO LXX FOR DETAILS
8	STREAM - REFER TO LXX FOR DETAILS
9	PUMPHOUSE - REFER TO LXX FOR DETAILS
10	SPLASH PAD - REFER TO LXX FOR DETAILS
11	MIST MOUNDS - REFER TO LXX FOR DETAILS
12	BIKE TRACK - REFER TO LXX FOR DETAILS
13	SKATE PARK - REFER TO LXX FOR DETAILS
14	BIKE SKILLS COURSE - REFER TO LXX FOR DETAILS
15	GATE - REFER TO CXX FOR DETAILS
16	VDOT STANDARD CG-9D - REFER TO C412 FOR DETAILS
17	FITNESS EQUIPMENT - REFER TO LXX FOR DETAILS
18	REMOVABLE BOLLARD - REFER TO CXX FOR DETAILS
19	BUMPER BLOCKS - REFER TO C411 FOR DETAILS
20	CG12 DETECTABLE WARNING SURFACE
21	FLUSH CURB - REFER TO CXX FOR DETAILS
22	GRAVEL DIAPHRAGM - REFER TO C411 FOR DETAILS



HATCH LEGEND	
[Hatch Pattern]	HEAVY DUTY ASPHALT SECTION
[Hatch Pattern]	LIGHT DUTY ASPHALT SECTION
[Hatch Pattern]	MULTI-USE ASPHALT TRAIL SECTION (VEHICULAR GRADE)
[Hatch Pattern]	CONCRETE SIDEWALK SECTION
[Hatch Pattern]	VEHICLE BRIDGE SECTION
[Hatch Pattern]	PEDESTRIAN BOARDWALK SECTION
[Hatch Pattern]	EARTHEN TRAIL SECTION
[Hatch Pattern]	REFER TO LANDSCAPE DRAWINGS FOR SECTION
[Hatch Pattern]	HEAVY DUTY CONCRETE SECTION
[Hatch Pattern]	GRAVEL SECTION
[Hatch Pattern]	GRAVEL DIAPHRAGM
[Hatch Pattern]	IMPERVIOUS (SURFACE TO BE DETERMINED)

STRIPING LEGEND	
[Symbol]	4" DOUBLE YELLOW LINE
[Symbol]	FIRE LANE STRIPING
[Symbol]	PAINTED TRAFFIC ARROWS
[Symbol]	PAINTED CROSSWALK
[Symbol]	4" SOLID WHITE LINE
[Symbol]	24" SOLID WHITE LINE

SIGNAGE LEGEND	
[Symbol]	R1-1 36"x36" STOP
[Symbol]	'RESERVED PARKING' (for persons with disabilities)
[Symbol]	'VAN ACCESSIBLE' SIGN
[Symbol]	'EMERGENCY ACCESS ONLY' SIGN
[Symbol]	'NO PARKING FIRE LANE TOWING ENFORCED'
[Symbol]	R5-1 'DO NOT ENTER' SIGN
[Symbol]	'AUTHORIZED VEHICLES ONLY'
[Symbol]	R4-7 'KEEP RIGHT' SIGN



6800 Staples Mill Road  
Henrico, VA 23228  
(804) 501-7275

**TAYLOR FARM PARK**  
200 Whiteside Dr  
Sandston, VA 23150



NAME: GREG NELSON, PE  
LICENSE: VIRGINIA  
LIC. NO.: 049202

CONSTRUCTION DOCUMENTS PREPARED BY:



MASTER PLAN PREPARED BY:



REVISION:

# Design Development

# Who We Are

**HILRIDE**  
Progression Development Group

**Our mission:**  
To create positive  
impact through design.





# Amenities

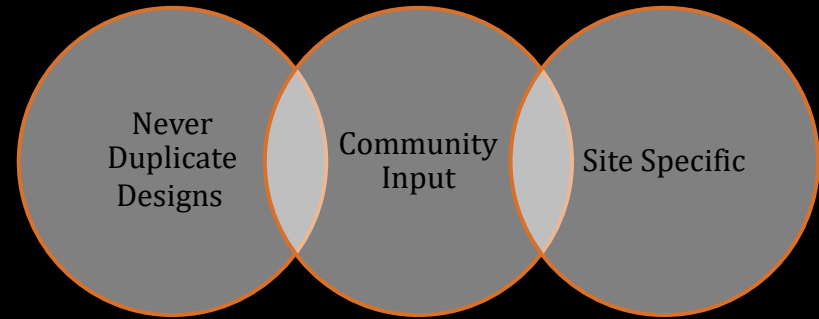


1. Skatepark
2. Pump Track
3. Flow Trail
4. Spectator Area





# Our Approach



*"Pillar designed the park to fit our property and made it a point to understand the needs of the community. They made our dream come true."*

*Bob Bryning,  
Montez Skatepark  
Monte Vista, CO*







# Our Approach

**2018 Project Of The Year**  
*American Public Works  
Association (APA)  
Lake Cunningham Bike Park, San  
Jose, California*

**2018 Exceptional Park Design  
of The Year**  
*Indiana Recreation and  
Parks Association (IRPA)  
Griffin Bike Park, Terre Haute,  
Indiana*

**2017 National Park Design of  
the Year**  
*National Parks and  
Recreation Association (NRPA)  
Griffin Bike Park, Terre Haute,  
Indiana*

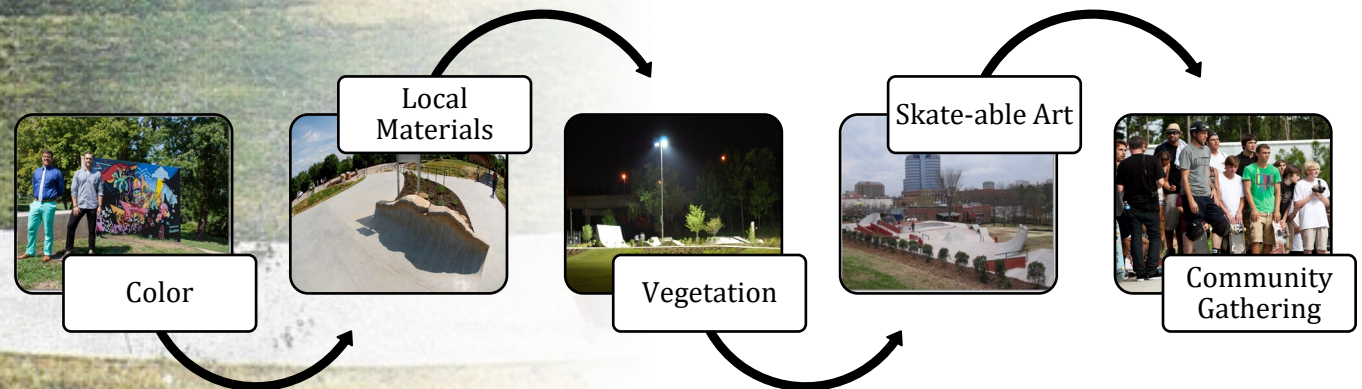




# Urban Design

***"Brad and I developed the world's very first 'Skate Plaza' together (Kettering, Ohio). He is an absolute professional with a mass of knowledge that made all the difference. His dedication to the project from start to finish helped make history in skateboarding. He is a true expert in the field of skatepark/skate plaza design."***

Rob Dyrdek, Professional Skateboarder  
& Founder of The Rob Dyrdek Foundation.





# Storm Water Management





# PARK STYLES / AMENITIES





# Urban / Street / Plaza Parks





# Vert Ramp







Transition

---

Flow

---

Bowl

---

Parks







# Pump Tracks

## Pump Parks





Flow  
Trails

Skill  
Trails





# Preliminary Master Plan



## ZONES

- 9. Pump Track
- 27. Spectator Seating Area
- 8. Flow Trail
- 10. Skatepark
- 38. Parking
- 31. Restrooms