



2022 HENRICO POLICE CRIME STATISTICS
APPLICATION OF FORCE

CHIEF OF POLICE ERIC D. ENGLISH
Published March 23, 2023

January 1, 2021-December 31, 2021



HENRICO.US/POLICE



NOTE: Division Policy Change in 2021 Affecting Data

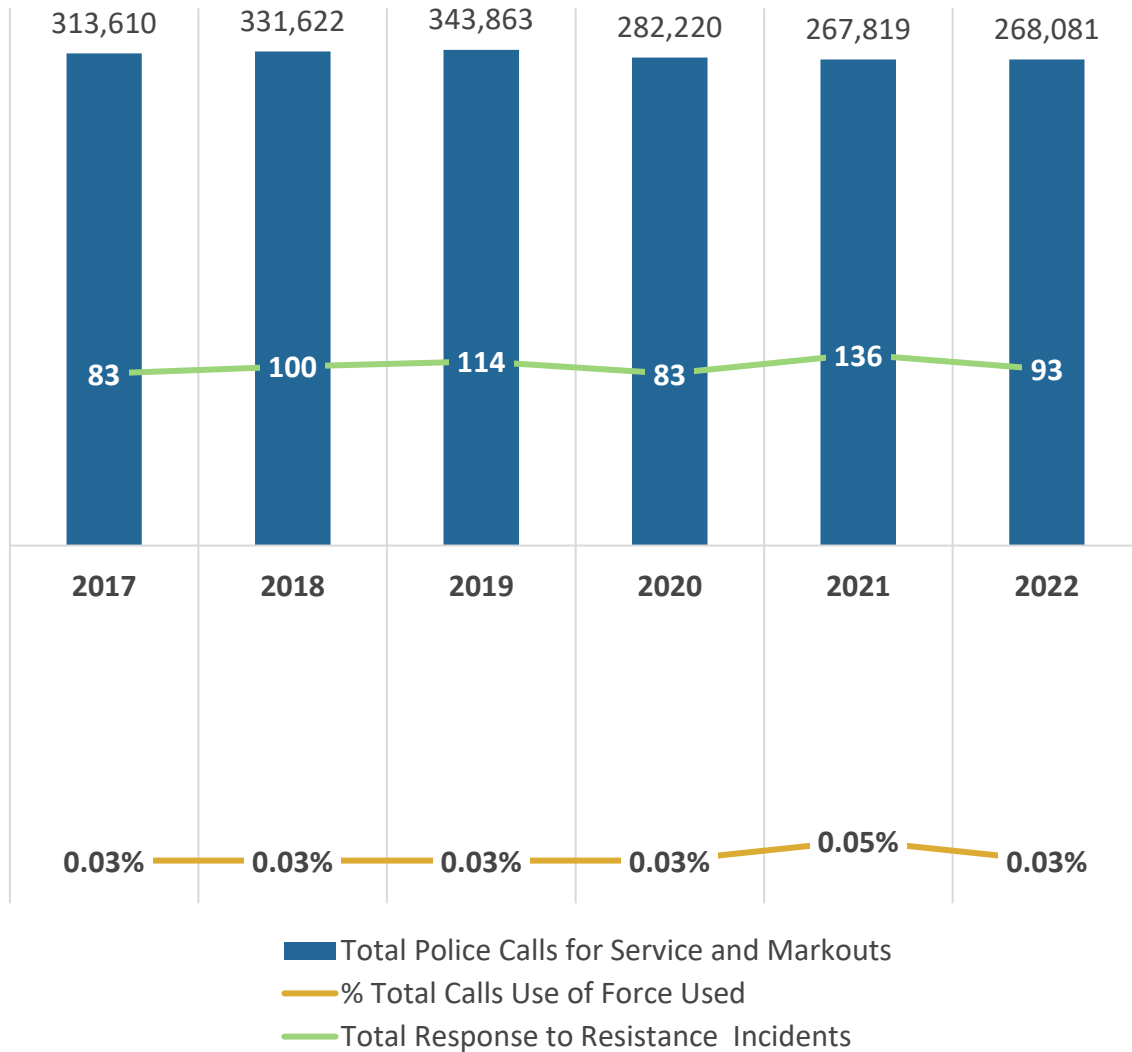
The Police Division's Response to Resistance After-Action Report captures officer reported data on the subject's actions that created the need for an officer response. The definitions for subjects' actions were revised during a policy change to G-71, Response to Resistance, in June 2021. Due to this revision an increase of Response to Resistance After-Action reports were created. The utilization of the precision immobilization technique (PIT) was also redefined on the use of force continuum with the Police Division policy in June, resulting in less applications. Beginning June 21, 2021, subject actions were defined as passive, active, assaultive, life threatening/serious bodily injury, and other. Therefore, a direct correlation of data between calendar year 2021 and calendar year 2022 is not achievable for analysis, due to only six months of collected data (57.14% of 2021 encounters).



2022 HENRICO POLICE CRIME STATISTICS

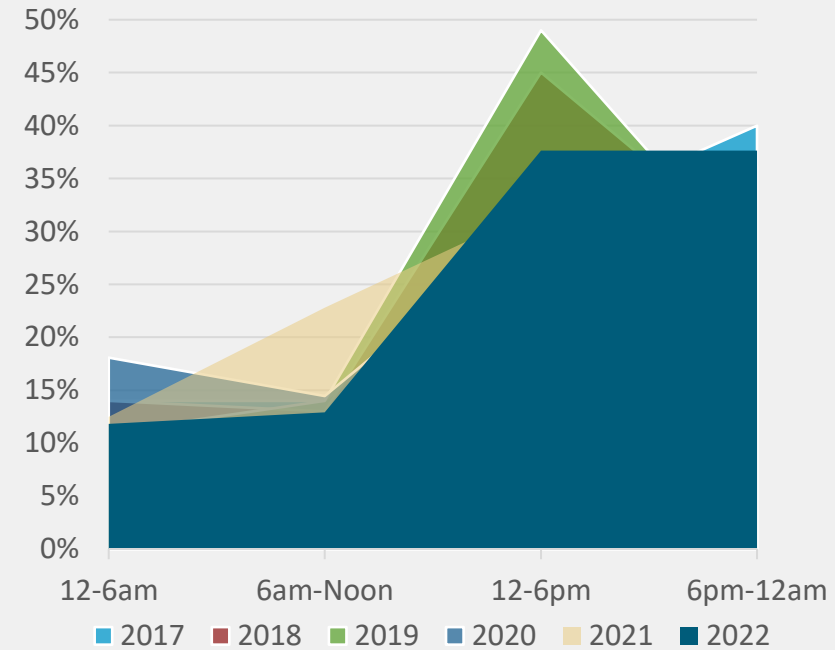
APPLICATION OF FORCE OCCURRENCES

TOTAL AND PERCENT OF APPLICATION OF FORCE INCIDENTS COMPARED TO TOTAL CALLS FOR SERVICE AND POLICE MARK OUTS PER CALENDAR YEAR, 2017-2022

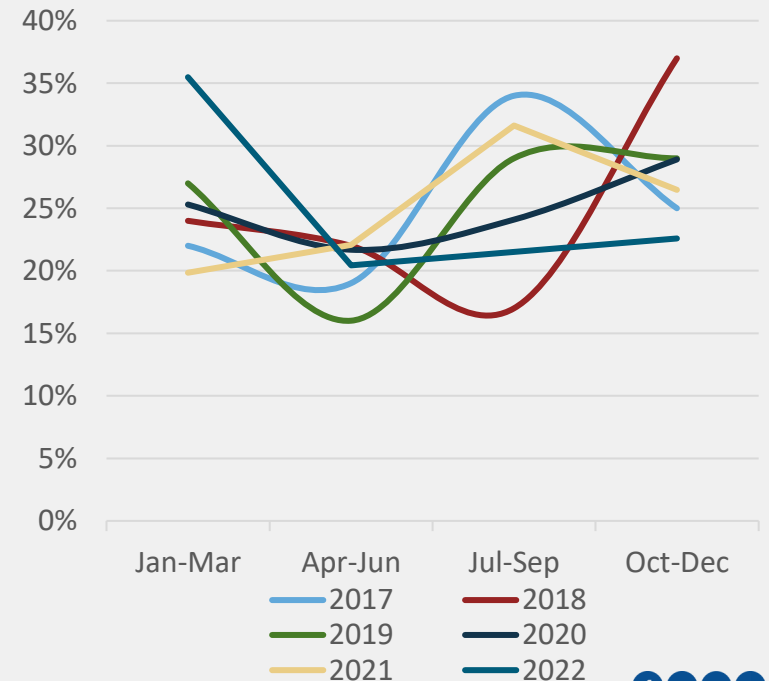


Call for Service: Request for police services
 Mark Out: Police-initiated activity/service

TIME OF DAY RESISTANCE INCIDENTS OCCUR, 2017-2022



TIME OF YEAR RESISTANCE INCIDENTS OCCUR, 2017-2022

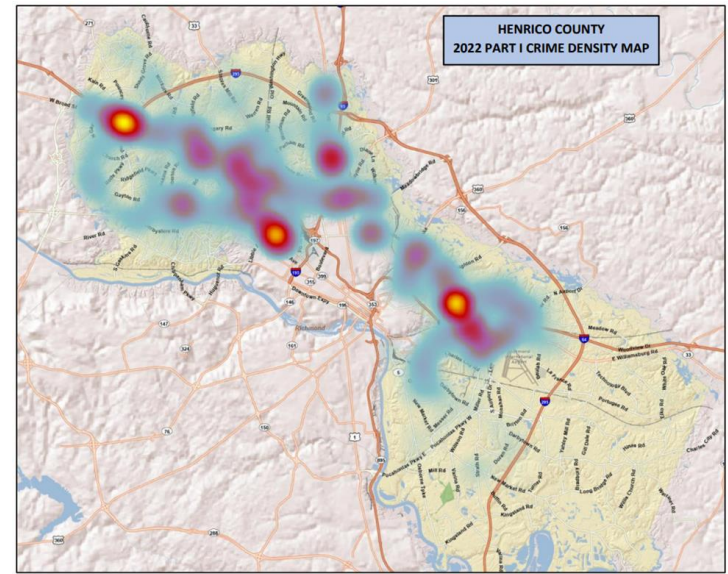




2022 HENRICO POLICE CRIME STATISTICS

APPLICATION OF FORCE OCCURRENCES

In 2022, Patrol West Station responded to 50.32% (66,211) of the calls for service received, Patrol Central for 15.09% (19,857) of the calls for service, and the remaining 34.58% (45,503) of the calls for service were assigned to Patrol South.



	2017	2018	2019	2020	2021	2022
Location/Police Sections Involved	% Total Incidents	% Total Incidents	% Total Incidents	% Total Incidents	% Total Incidents	% Total Incidents
Patrol West	36%	34%	33.91%	31.13%	45.99%	38.69%
Patrol Central	31%	27%	29.57%	20.48%	23.21%	27.74%
Patrol South	25%	25%	26.07%	38.55%	21.10%	21.17%
Canine	-	3%	-	-	-	-
School Services Unit	5%	3%	6.96%	3.61%	1.27%	2.19%
Emergency Response Team	2%	2%	-	-	-	-
Special Operations Group	-	-	1.74%	4.82%	2.11%	8.03%
Office of the Chief	2%	1%	0.87%	-	-	-
Community Policing	-	1%	.87%	-	1.27%	-
Criminal Investigations Section	-	1%	-	-	2.11%	2.19%
Off Duty	-	-	0.00%	2.41%	2.95%	-



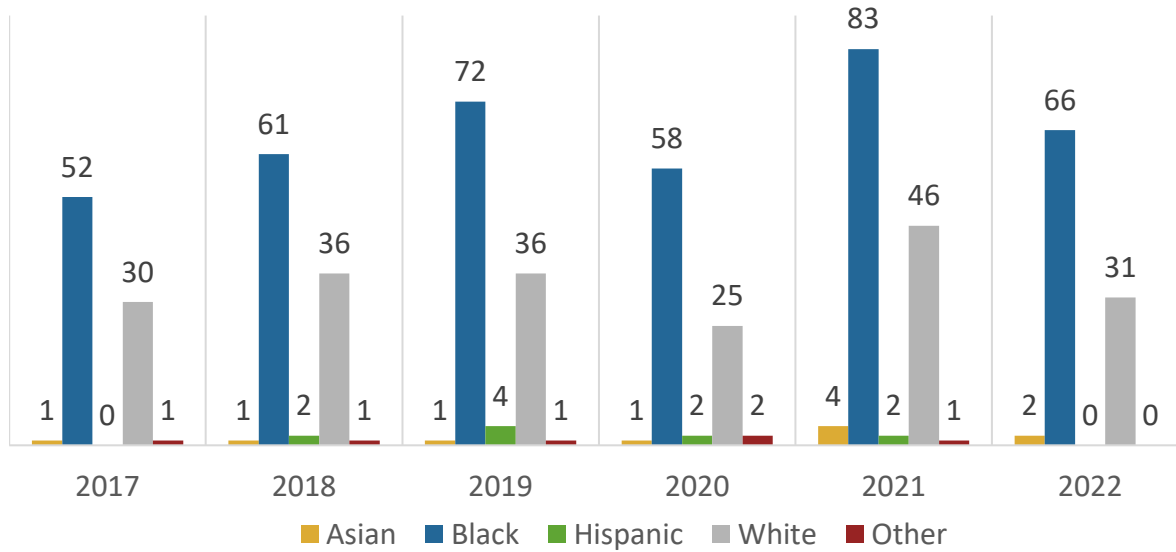


2022 HENRICO POLICE CRIME STATISTICS

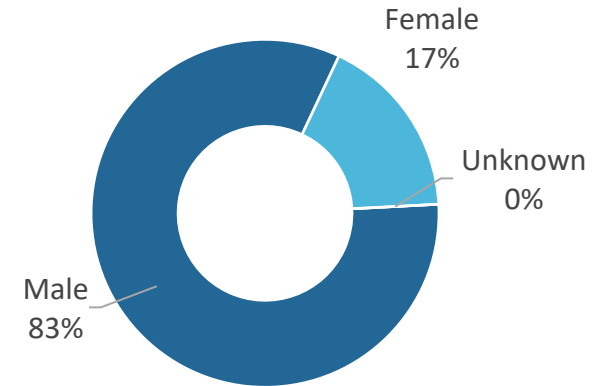
APPLICATION OF FORCE DEMOGRAPHICS

In 2022, the subjects involved in use of force incidents ranged from age 13 to 56 years old, with an average age of 29 years old.

RACE/ETHNICITY OF SUBJECTS PER CALENDAR YEAR, 2017-2022



GENDER OF TOTAL USE OF FORCE SUBJECTS, 2022



Race/Ethnicity	2017		2018		2019		2020		2021		2022	
	Instances	% Total Incidents	Instances	% Total Incidents	Instances	% Total Incidents	Instances	% Total Incidents	Instances	% Total Incidents	Instances	% Total Incidents
Asian	1	1%	1	1%	1	1%	1	1.12%	4	2.90%	2	2.02%
Black	52	62%	61	60%	72	63%	58	65.17%	83	61.03%	66	66.67%
Hispanic	0	0%	2	2%	4	4%	2	2.25%	2	1.99%	0	0%
White	30	36%	36	36%	36	32%	25	29.21%	46	33.82%	31	31.31%
Other	1	1%	1	1%	1	1%	2	2.25%	1	.74%	0	0%





APPLICATION OF FORCE

APPLICATIONS OF FORCE APPLIED IN ALL USE OF FORCE INCIDENTS, 2017-2022

	2017	2018	2019	2020	2021	2022
Force Applied	Applications of Force	Applications of Force	Applications of Force	Applications of Force	Applications of Force	Applications of Force
Physical Force	74	115	121	92	194	106
Taser	26	15	23	12	19	15
O.C. Fogger	-	5	6	11	-	1
Pepper Ball Munitions	-	-	-	11	-	-
PIT	4	12	7	11	6	-
O.C. Spray	4	-	-	13	2	16
Firearm	-	-	1	1	2	6
Tactical	2	4	-	-	3	2
Canine	2	3	1	-	1	-
Baton	1	2	1	-	1	-
Vehicle Containments with intentional contact*	-	-	-	-	-	5
TOTAL	113	156	160	151	228	151

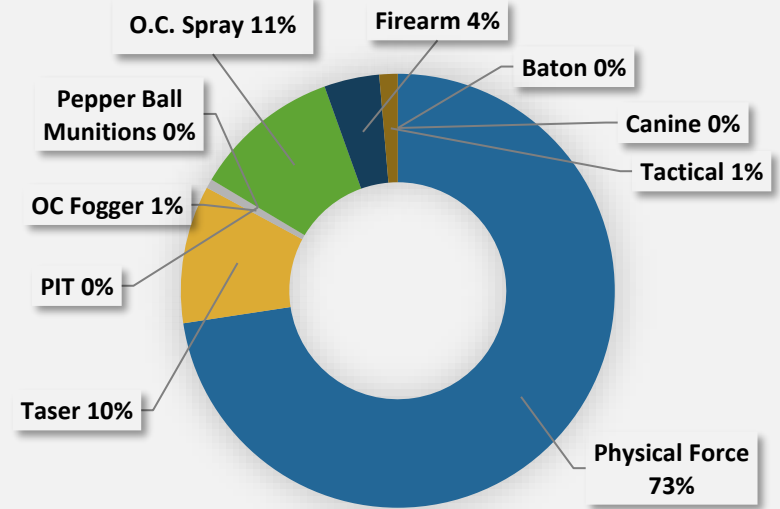
*Due to multiple Division policy changes, vehicle containments with intentional contact is now included in application of force data.

An incident and/or individual may necessitate multiple applications of force.

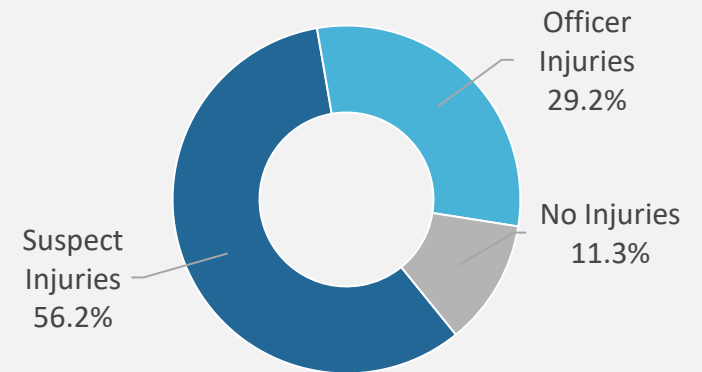
PIT: Vehicular Precision Immobilization Technique

Source: Professional Standards, Quality Assurance Use of Force Analysis

USE OF FORCE APPLIED BY TYPE, 2022



INJURIES FROM USE OF FORCE INCIDENTS, 2022



Injuries are defined for reporting purposes as pain/soreness, bruising/swelling, abrasions/lacerations, exposure to chemical agents or Taser barbs, fractures, stabbing/ gunshot/puncture wounds or other injuries not experienced prior to the encounter. Police Division policy strictly dictates appropriate medical intervention for injured persons, including for perceived minor injuries.





APPLICATION OF FORCE

REASONS FOR RESISTANCE, 2021-2022

Subject's Reason for Resistance	2021		2022	
	# of Incidents	% of Incidents	# of Incidents	% of Incidents
Wanted	16	11.76%	17	17%
No reason given	26	19.12%	30	30%
Mental Health Crisis	28	20.59%	9	9%
Intoxicated/Drug	45	33.09%	29	29%
Scared	6	4.41%	6	6%
Other	15	11.03%	9	9%

REASONS FOR APPLICATION OF FORCE, 2021-2022

Citizen Action/ Officer's Reason for Force	2021	2022
	% of Incidents	% of Incidents
Passive	6.45%	6.62%
Active	28.11%	40.44%
Assaultive	12.44%	38.24%
Life Threatening / Serious Bodily Injury	2.76%	9.56%
Other	9.22%	5.15%