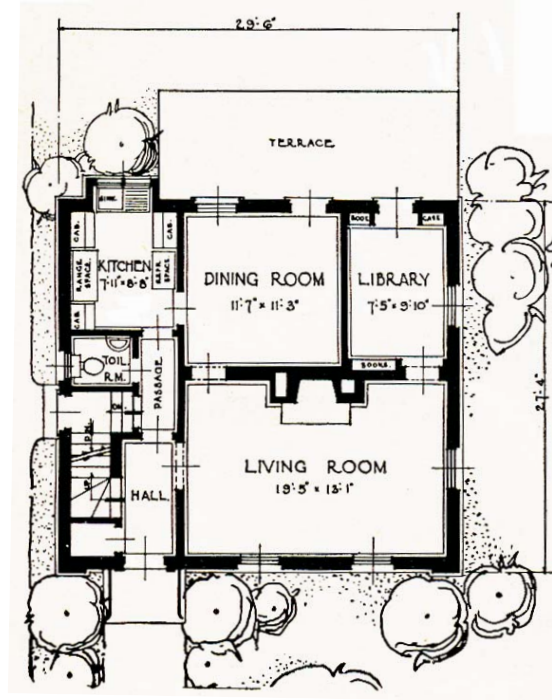


HOMEOWNER'S ENHANCEMENT GUIDE

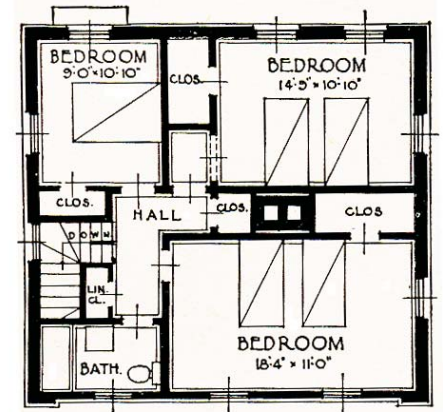
Chapter 5: *The Colonial Revival*



COLONIAL REVIVAL BACKGROUND



The Sears Honor-Bilt "Amherst" plan remained popular for many years, after its introduction in 1935, due to its practical floor plan.



The Colonial Revival style is based loosely upon the Georgian and Federal styles of the late-eighteenth and early-nineteenth century. It regained popularity after the country's centennial in 1876 and is one of the country's most enduring house styles.

Colonial Revival houses in Henrico are clustered in the western portion of the county. They tend to be brick and may have either a central or side entry. Other adaptations include an asymmetrical arrangement of windows on the front of the house.

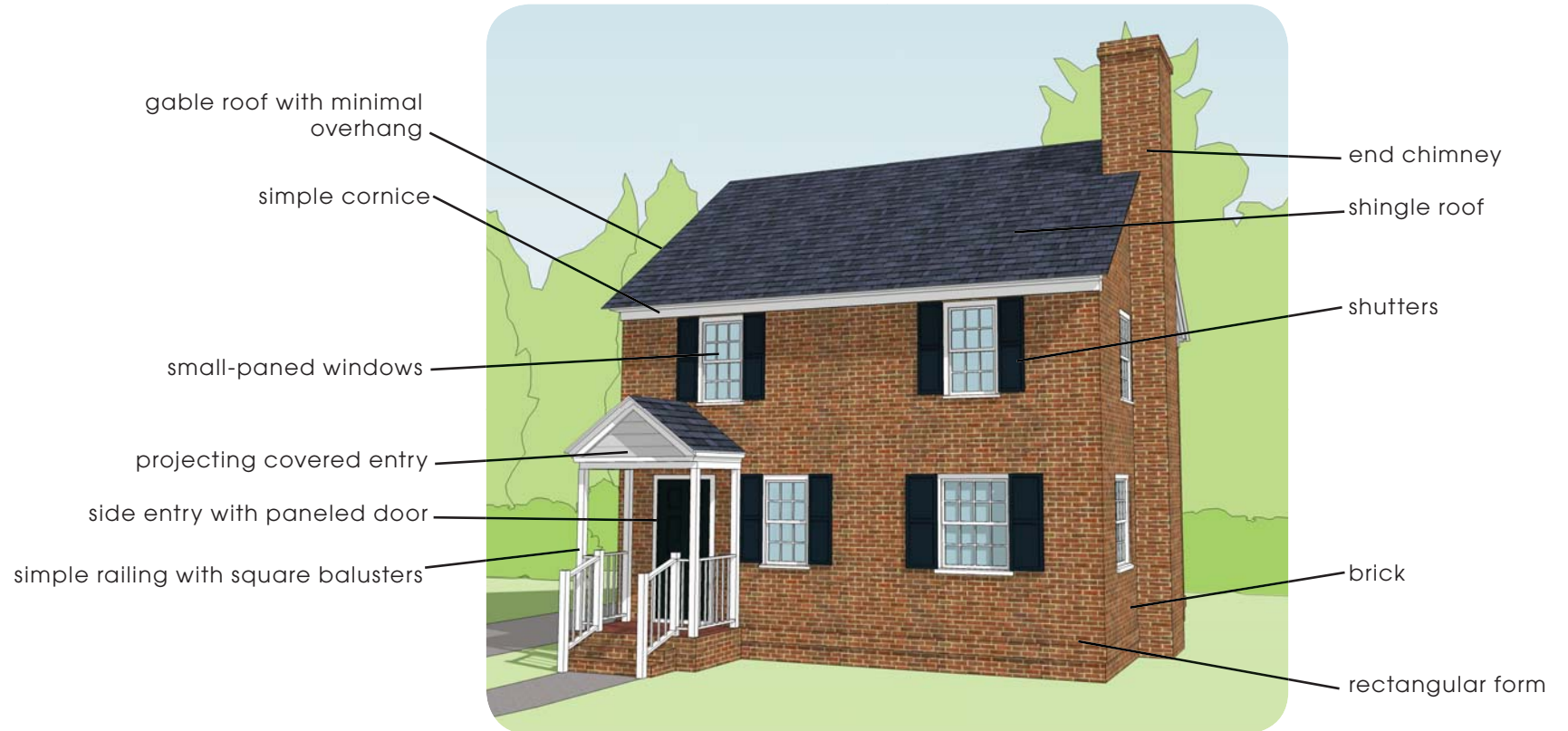
LIKES:

- Traditional appearance/classic design
- Room for a growing family
- Functional floor plan
- Good cross-ventilation

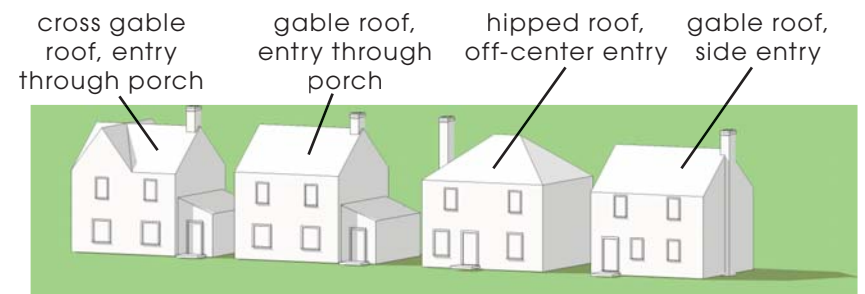
DISLIKES:

- All bedrooms are upstairs
- Not enough bathrooms
- Defined formal rooms
- No open space for family

SIDE HALL COLONIAL REVIVAL HOUSE PARTS AND VARIATIONS



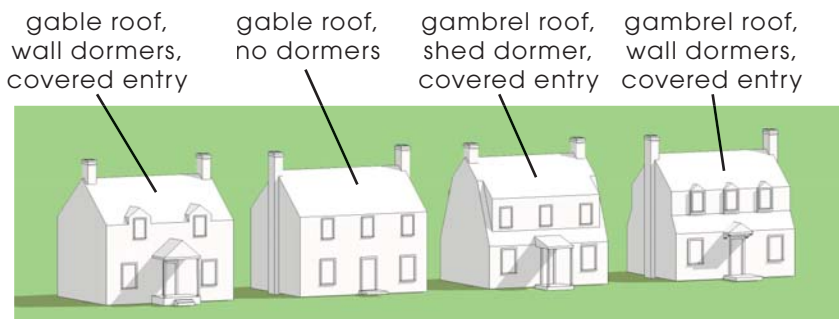
ROOF AND ENTRY VARIATIONS



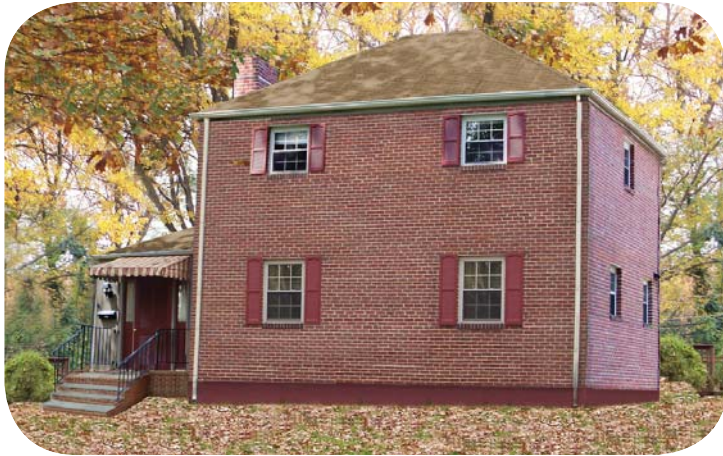
CENTER HALL COLONIAL REVIVAL HOUSE PARTS AND VARIATIONS



ROOF, DORMER, AND ENTRY VARIATIONS



CREATING CURB APPEAL



Before



An evergreen hedge at the foundation anchors the house to its site. Additional plantings provide colorful accents near the front door. The shutters and door have been freshly painted in a traditional dark green. The new slate walkway has been also been added.



A new dark gray roof provides a pleasing visual contrast with the brick.



The transformation is completed when a new classical portico replaces the existing awning, replacement windows are installed, the trim receives a fresh coat of white paint, and additional plantings are used to provide seasonal color.



CREATING CURB APPEAL, continued



Before



The traditional appearance of this house is updated by the removal of the broken pediment above the door. The remaining classical trim strengthens the impact of the entrance. A darker paint color accents the shutters and door. Foundation plantings provide color and help anchor the house to the site.



A new curved brick walkway is accented with small evergreens on each side. Staining the concrete or adding brick or stone is another option.



A darker roof and new classical portico, with a hipped roof and Chippendale railing complete the transformation.



IDEAS FOR ADDITIONS - SIDE HALL COLONIAL

See page 49 for additional ideas **B** **C** **D**



two-story, hip-roofed rear addition



EXISTING PLAN



EXISTING FRONT VIEW



A REAR VIEW with addition



EXISTING REAR VIEW



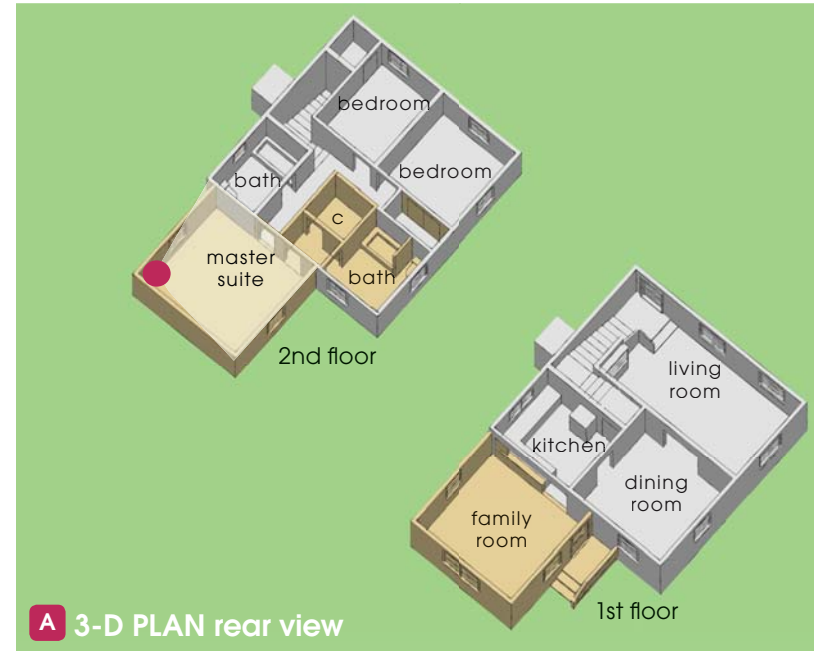
A REAR VIEW with addition & site enhancements



IDEAS FOR ADDITIONS - SIDE HALL COLONIAL, continued



The master bedroom, viewed here from the location of the dot in the 3-D plan rear view, is located on the upper level of a two-story addition. The placement of the addition allows the original bathroom to be retained and uses the existing hall to connect to the new construction. The space formerly occupied by the rear bedroom has been modified to become closet and bathroom space for the master suite. The space below the new master suite is designed as a family room with a new rear entrance.



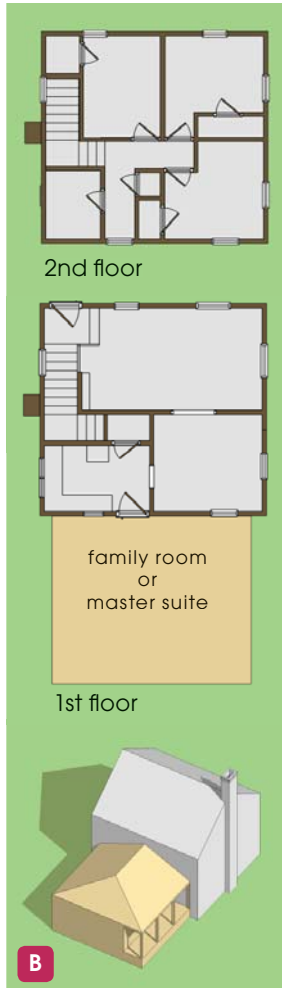
This two-story addition adds a family room with a master bedroom above. An existing bedroom on the second floor is converted to a master bathroom and closet.

“It’s so nice to **FINALLY** have a
SECOND bathroom”

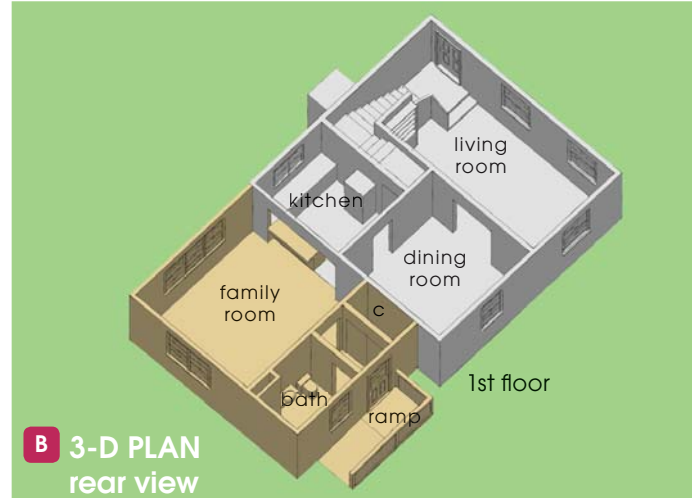


MORE IDEAS FOR ADDITIONS - SIDE HALL COLONIAL

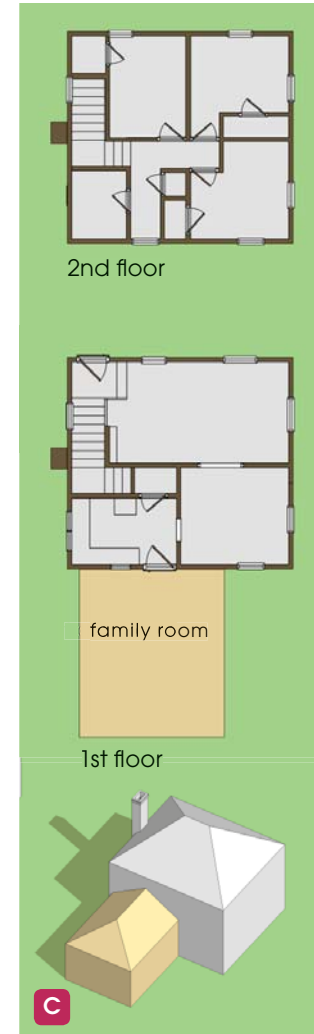
Continued from page 47.



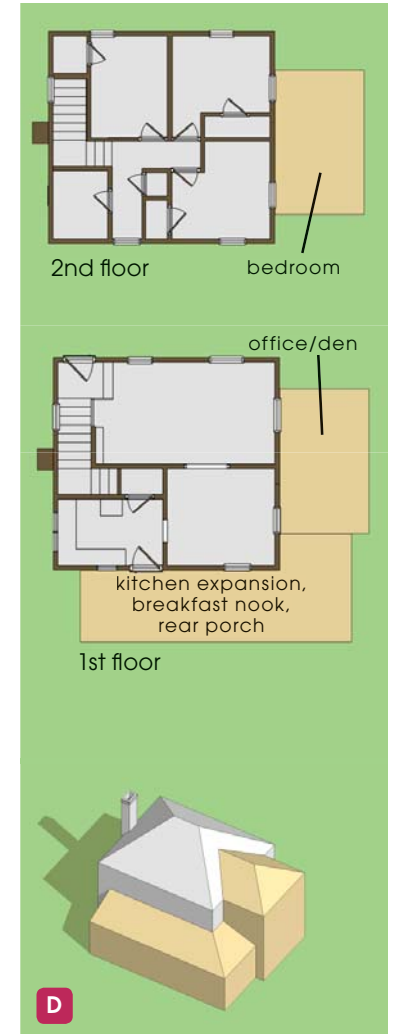
one-story, hip-roofed addition with side porch



This one-story addition adds a family room and adjoining bathroom and storage space. It could easily function as a master suite if one-story living was needed. The rear entrance has an extended stoop and ramp with a traditional railing and provides an accessible entry into the house.



one-story, hip-roofed rear addition



one-story, hip-roofed wrap-around and two-story side wing

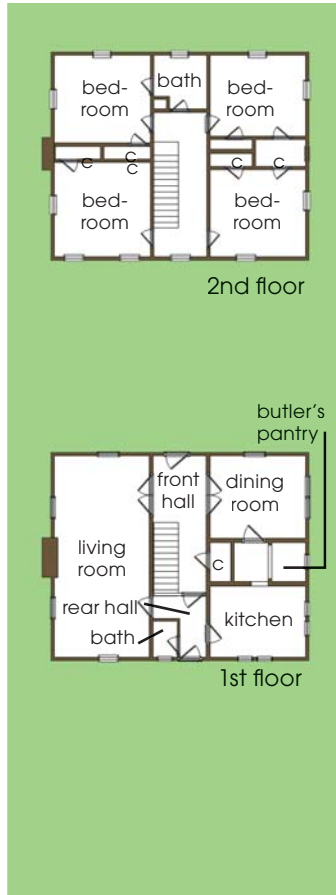


IDEAS FOR ADDITIONS - CENTER HALL COLONIAL

See page 52 for additional ideas **B C D E**



one-story, hip-roofed rear addition with hip-roofed porch



EXISTING PLAN



EXISTING FRONT VIEW



EXISTING REAR VIEW

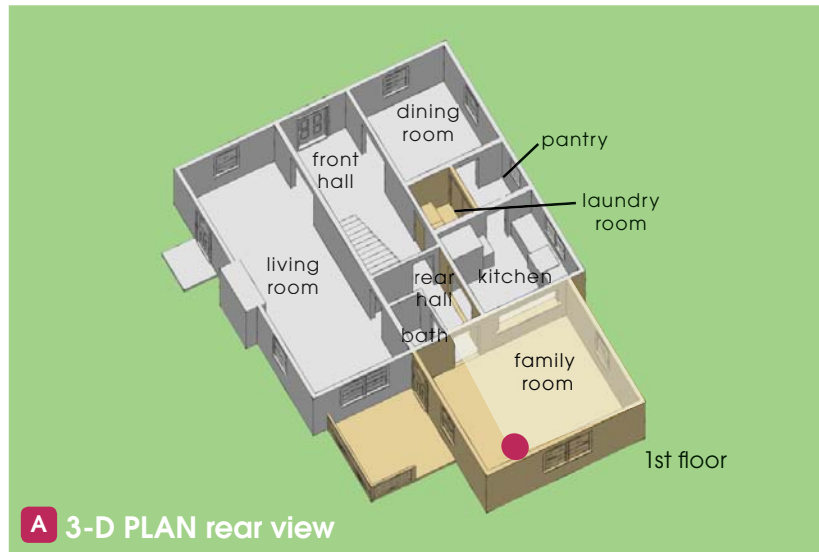


A REAR VIEW with addition



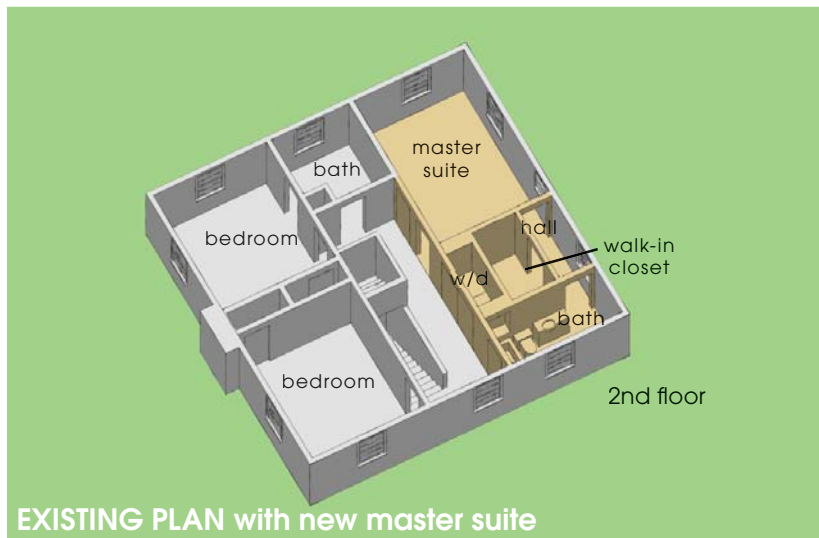
A REAR VIEW with addition & site enhancements





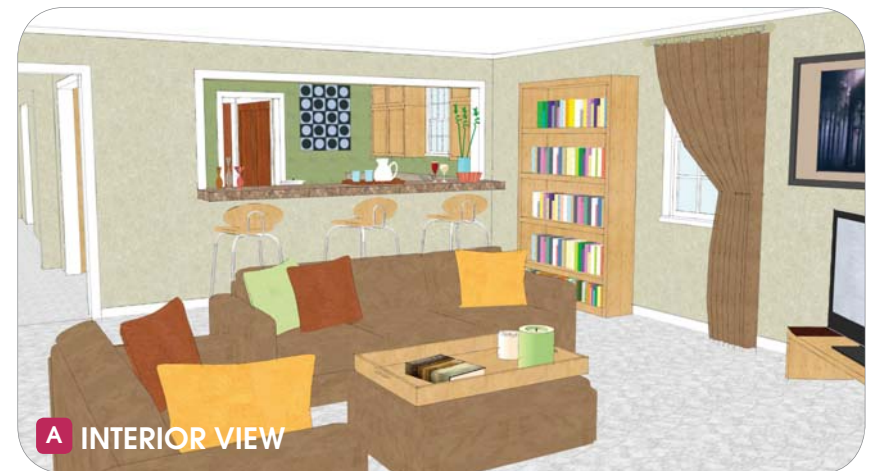
A 3-D PLAN rear view

This one-story addition provides a family room that opens onto a covered porch facing the rear yard.



EXISTING PLAN with new master suite

Modifying the plan upstairs may alleviate the need for a two-story addition.



This view shows the new family room looking into the kitchen. A large opening has been cut through the former exterior wall to visually connect the kitchen to the newly constructed gathering space. Stools and a counter create a casual eating space.

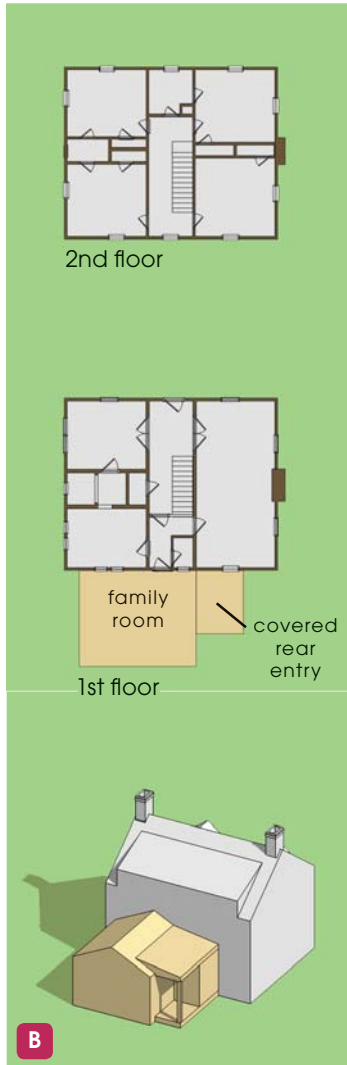
Upstairs, the original plan has been modified to create a master suite. One of the four bedrooms has been converted into a new master bathroom, alleviating the need for everyone to share the single original bathroom. A hall and walk-in closet connect the master bedroom to the new bathroom.

“By combining two bedrooms on the second floor into a new MASTER SUITE we were able to save money and only build a one-story ADDITION”

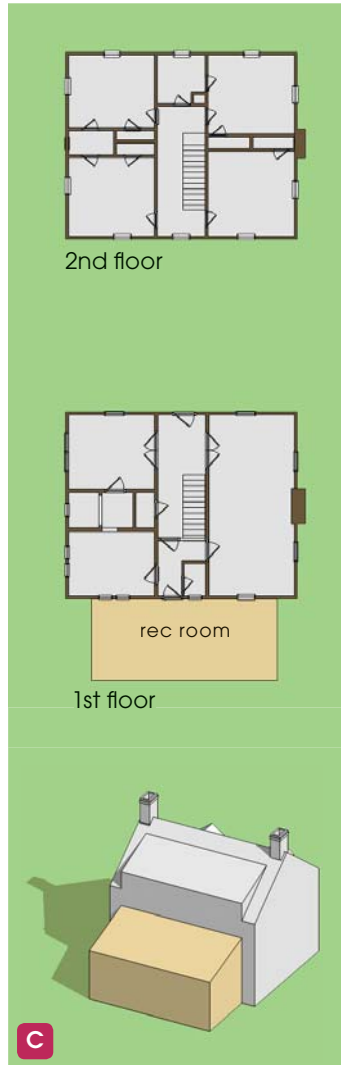


MORE IDEAS FOR ADDITIONS - CENTER HALL COLONIAL

Continued from page 50.



one-story, gable-roofed rear addition with shed-roofed rear entrance



one-story, shed-roofed rear addition



two-story, gable-roofed rear addition with shed roofed porch



two-story, side addition with gable roof and rear shed dormer

