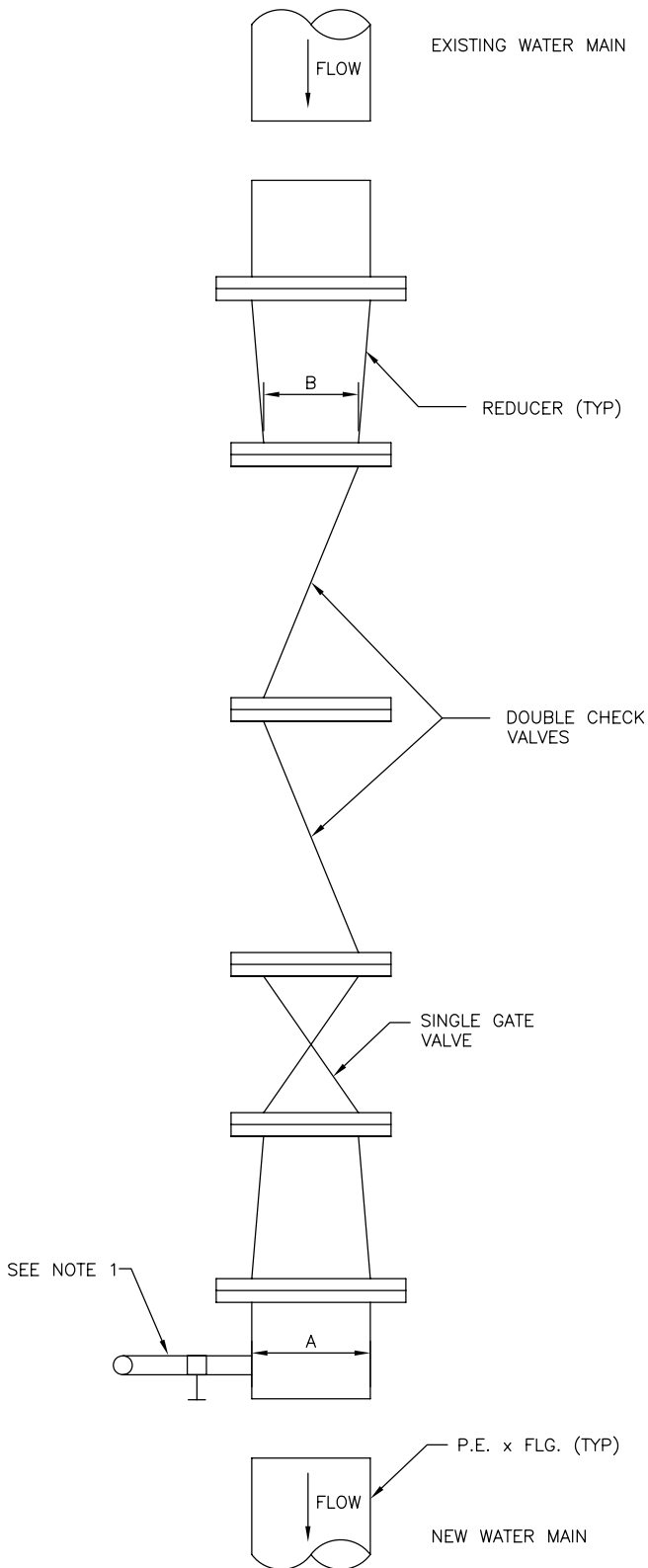


COUNTY OF HENRICO DEPARTMENT OF PUBLIC UTILITIES



MAIN SIZE	CHECK VALVE AND GATE VALE SIZE
A	B
6"	4"
8"	4"
12"	6"

NOTE:

1. POINT (DEVICE) FOR ADDING DISINFECT SOLUTION (THIS IS A TEMPORARY CONNECTION AND SHALL BE PROPERLY REMOVED AND PLUGGED WITH A BRASS PLUG PRIOR TO REMOVING THE FLUSHING MECHANISM).

REVISIONS
06/20/2014

ISOLATION DEVICE FOR NEW MAIN
DOUBLE CHECK VALVE ASSEMBLY

DRWG. NO.
D-460