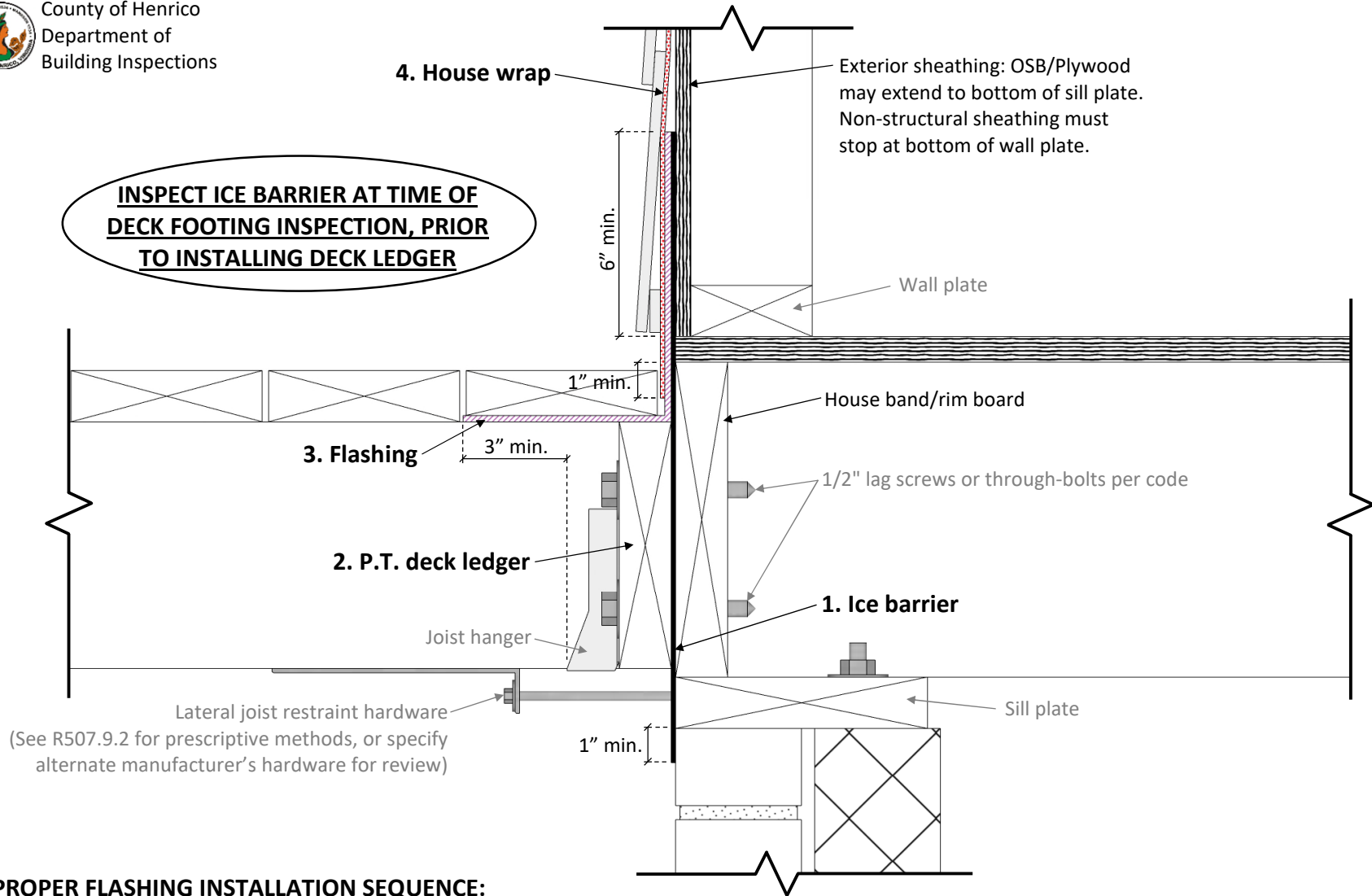




# DECK FLASHING DETAIL



**INSPECT ICE BARRIER AT TIME OF DECK FOOTING INSPECTION, PRIOR TO INSTALLING DECK LEDGER**

## PROPER FLASHING INSTALLATION SEQUENCE:

- |  |  |
|--|--|
| <p><b>1. Ice barrier:</b> Extend 6" min. above bottom of wall plate, and 1" min. below sill plate. Submit alternate barrier materials for review, must be self-sealing, <u>20 mil poly prohibited</u>.</p> | <p><b>3. Flashing:</b> Continuous rigid vinyl flashing, extend 3" min. past outer edge of joist hanger and 6" min. above bottom of wall plate. Copper or stainless steel also permitted, <u>aluminum prohibited</u>.</p> |
| <p><b>2. P.T. deck ledger:</b> Ensure all minimum bolt/screw edge distances are met.</p>   | <p><b>4. House wrap:</b> Overlaps continuous rigid vinyl flashing leg or ice barrier. Extend 1" min. below bottom of floor sheathing.</p>  |