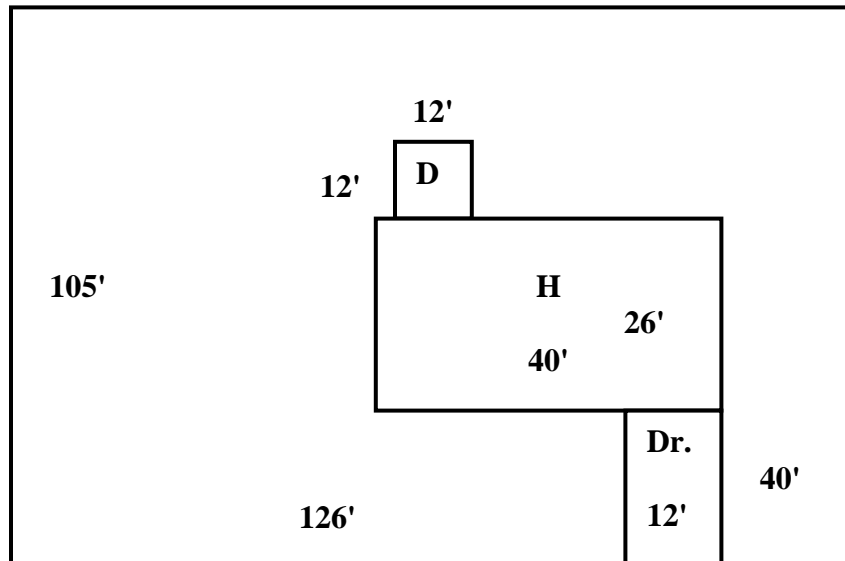


## HOW TO MEASURE YOUR YARD

If your lot is 126 feet deep and 105 feet wide\*, simply multiply  $126 \times 105 =$  a total of 13,230 square feet. Then subtract from this total the square footage of the house footprint, driveway, and any other areas that are not to be amended. The remainder will be the square footage of the area to be improved.

Total lot:	Lot	126' X 105'	=	13,230 sq. ft
Subtract:	House	40' X 26'	=	1,040 sq. ft
	Deck	12' X 12'	=	144 sq. ft
	Drive	40' X 12'	=	480 sq. ft
Remainder:	Yard		=	11,566 sq. ft



\*An easy way to measure long distances is with your garden hose provided you know its length. For instance, if your hose is 60' long and the area being measured is 2½ hose lengths long and 2 hose lengths wide, the area is  $2.5 \times 60' = 150'$  long by  $2 \times 60' = 120'$  wide. To get the square footage,  $150' \times 120' = 19,200 \text{ ft}^2$ .

To determine the square footage of some familiar shapes

**SQUARE or RECTANGLE**

Area = Length X Width

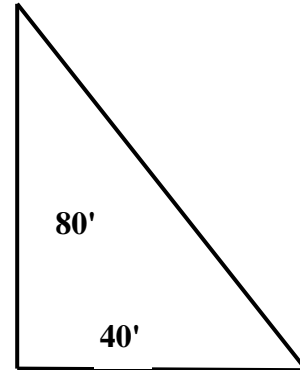
Length = 50'  
Width = 30'  
Area = 50' X 30' = 1,500 square feet



**TRIANGLE**

Area = 0.5 X Base X Height

Base = 40'  
Height = 80'  
Area = 0.5 X 40' X 80' = 1,600 square feet



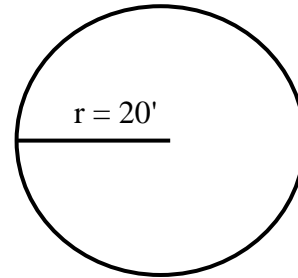
**CIRCLE**

Area =  $\pi r^2$

$\pi = 3.14$

r = radius = 20'

Area = 3.14 X (20' X 20') = 1,256 square feet



**IRREGULAR SHAPE**

Divide area into smaller sections having familiar shapes (e.g., triangles A & D, Rectangles B & C), then:

Area = Area A + Area B + Area C + Area D

A = 0.5 X (25' X 65') = 1,625 square feet  
B = 15' X 25' = 375 square feet  
C = 50' X 30' = 1,500 square feet  
D = 0.5 X (10' X 40') = 200 square feet

Area = 1,625 ft<sup>2</sup> + 375 ft<sup>2</sup> + 1,500 ft<sup>2</sup> + 200 ft<sup>2</sup>  
= 3,700 square feet

