

RAPE AND SEXUAL ASSAULT INVESTIGATIONS: NAVIGATING THE UNTHINKABLE

The following is a more detailed explanation of what to expect, in general, during the course of a rape or sexual assault investigation.

Detective Responds

An on-duty detective from the Henrico Police Division may respond, regardless of day or time. **However, this may not be the same detective who will ultimately be assigned to investigate the case.** The responding detective may conduct initial interviews for minimal facts and information at this time.

Detective Assigned

A detective from the Division's Special Victims Unit will be assigned to the investigation. He or she will contact you soon after the initial report is taken, typically during daytime hours, either by phone or in person.

An in-depth interview is typically scheduled at least 48 hours from the time the incident was reported. The detective assigned to the investigation may, or may not, be the same detective with whom you initially met.

Physical Examination

Depending on the circumstances, you may be examined by specially-trained nurses at either St. Mary's Hospital (5801 Bremono Road), or MCV-VCU Hospital (1213 E. Clay Street). The purpose of the examination is to recover and document any potential evidence.

Witness Interviews

In the initial stages of the investigation, the primary focus will be on your wellbeing and the collection of evidence, statements, etc.

While this may appear police are not investigating all possible leads, rest assured, any and all potential witnesses pertinent to the investigation will be contacted during the course of the investigation.

Findings Presented

Once the investigation is complete, the findings are presented by your detective to the Henrico County Commonwealth's Attorney Office. Upon review, the Commonwealth's Attorney will make a determination to either continue the investigation, place criminal charges, or decline prosecution.

Help & Resources

Virginia Sexual & Domestic Violence Action Alliance

vsdvalliance.org

Helpline: 1-800-838-8238

LGBTQ Helpline: 1-866-356-6998

Text Helpline: 804-793-9999

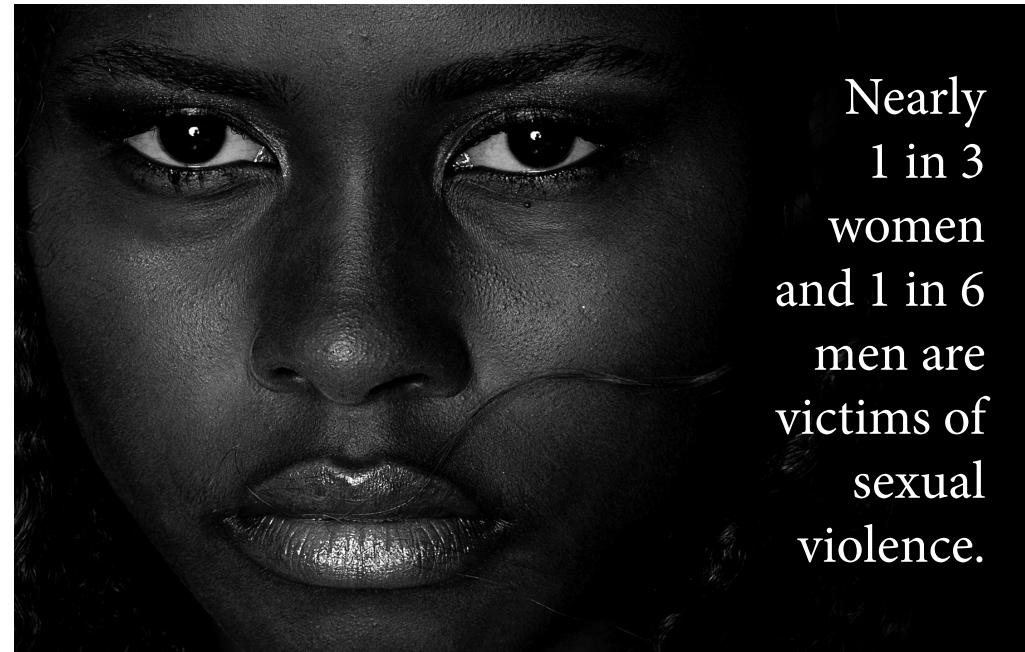
Online Chat: vadata.org

Virginia Department of Criminal Justice
dcjs.virginia.gov/victims-services

Rape, Abuse, & Incest National Network (RAINN)

Call or Chat 1-800-656-HOPE

National Sexual Violence Resource Center
nsvrc.org



Nearly
1 in 3
women
and 1 in 6
men are
victims of
sexual
violence.

WHAT TO EXPECT

After police receive a report of rape or sexual assault, below are the general steps in the investigative process. From the initial response and throughout the investigation, here is what you can expect:

– DETECTIVE RESPONDS –

An on-duty detective may respond, however, it may not be the detective who will be assigned to your case.

– DETECTIVE ASSIGNED –

After the initial response, a detective from the Special Victims Unit will be formally assigned to the case.

– PHYSICAL EXAMINATION –

Depending on circumstances, you may be examined by specially-trained nurses at an area hospital.

– WITNESS INTERVIEWS –

Possible witnesses will be interviewed.

– FINDINGS PRESENTED –

Findings from the investigation will be presented for review to the Henrico County Commonwealth's Attorney Office.



Henrico County Police Division
Internationally Accredited



Henrico County Police Division
P. O. Box 90775
Henrico, VA 23273-0775

Emergency: 911
Non-emergency: (804) 501-5000
henrico.us/police

Humberto I. Cardounel, Jr.
Chief of Police

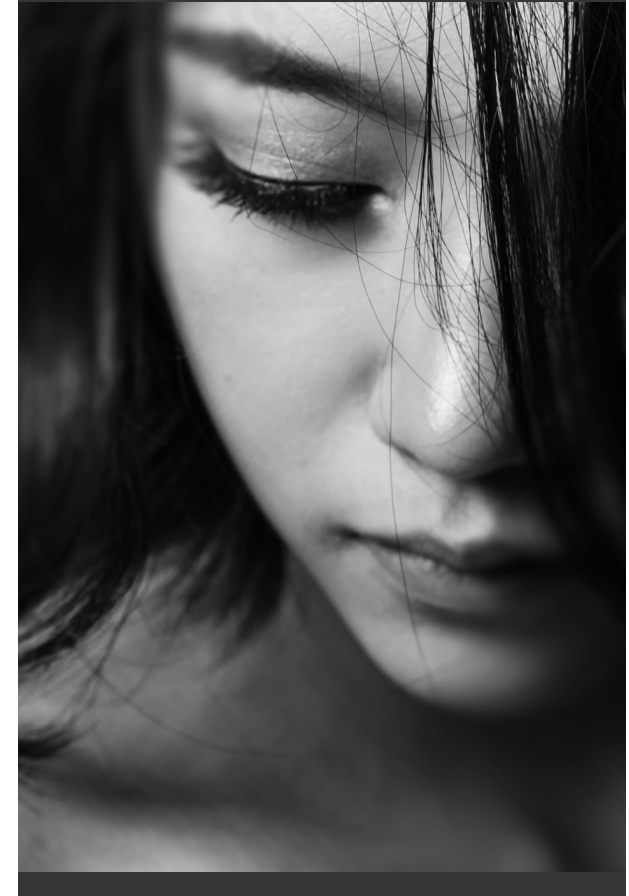


*Proud of our progress;
Excited about our future.*

2019-PIO/LGB

RAPE AND SEXUAL ASSAULT INVESTIGATIONS

NAVIGATING THE UNTHINKABLE



**REPORT ALL SUSPICIOUS
ACTIVITY TO POLICE**

Emergency: 911
Non-Emergency: 804-501-5000



ICR#: _____