



2014-2015
 Bagged Leaf Collection
 Map



2014-2015
 Bagged Leaf
 Collection Schedule

Area B
 Nov. 17-Nov. 23
 Jan. 5-Jan. 11

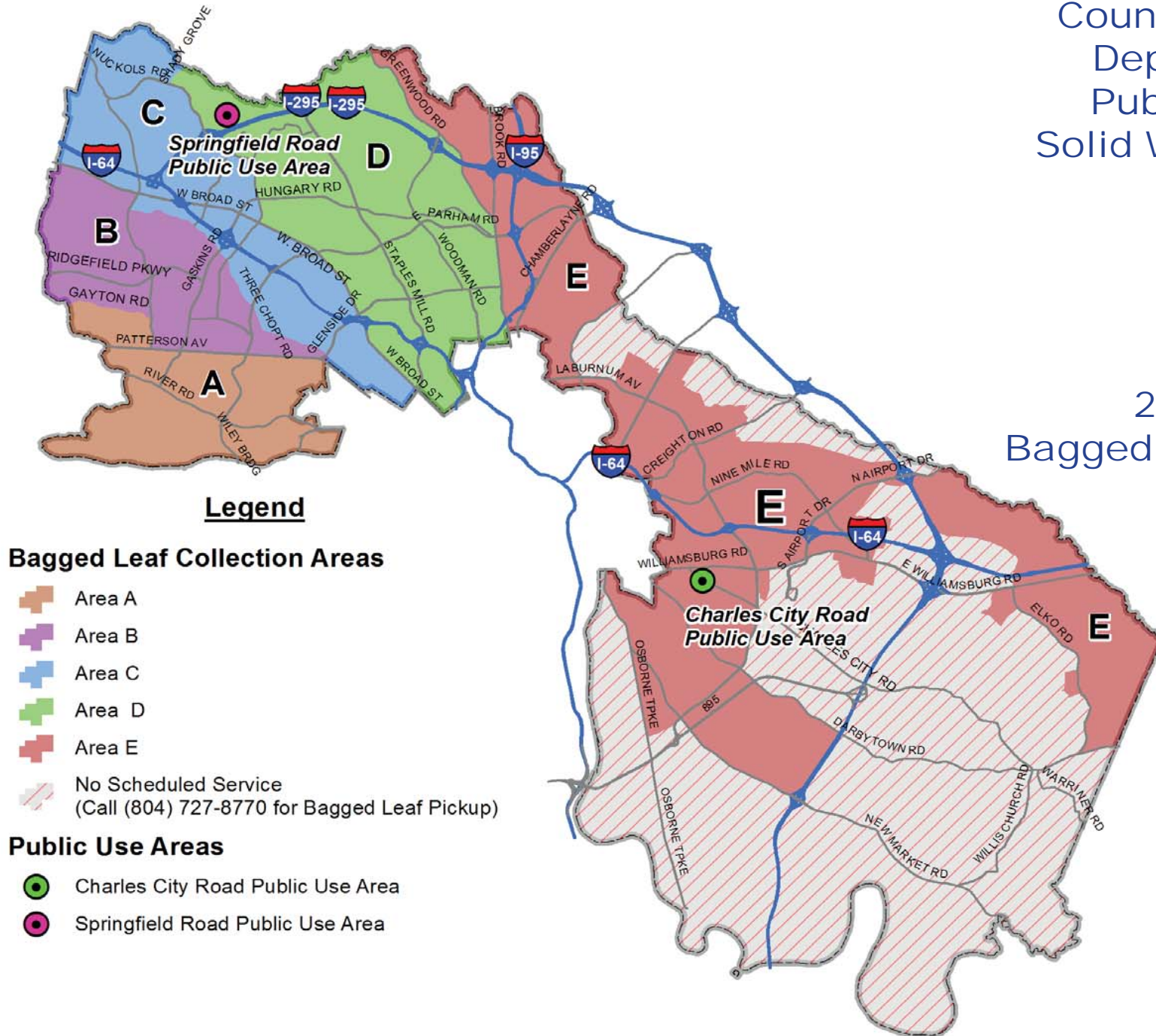
Area C
 Dec. 1-Dec. 7
 Jan. 12-Jan. 18

Area D
 Dec. 8-Dec. 14
 Jan. 19-Jan. 25

Area E
 Dec. 15-Dec. 21
 Jan. 26-Feb. 1

Area A
 Dec. 29-Jan. 4
 Feb. 2-Feb. 8

Please note:
 There will be no collection
 during the holiday weeks of
 November 24-30
 and December 22-28.



Free Bagged Leaf Collection November 17, 2014 - February 8, 2015

Henrico County provides its residents with curbside collection of bagged leaves. The schedule and areas for collection are identified on the map provided within this brochure. For residents living in Areas A-E, collection services are provided automatically and it is not necessary to call and place an order for pickup. Residents living outside of Areas A-E will need to call our office at (804) 727-8770 to place an order for pickup. Please note the following guidelines:

- During the scheduled collection week, our crews will make one pass down each street to collect bagged leaves.
- We are not able to predict the specific day we will arrive in your neighborhood.
- Bagged leaves should be at the curb or the edge of the road by 7 a.m. on the Monday of the scheduled collection week. Our employees are not authorized to enter your property to remove bags.
- Bags should contain only leaves; do not put garbage or debris in the bags.
- There is no limit to the number of bags you may place at the curb.
- We frequently work weekends and during the holiday weeks in the busiest collection periods to finish each zone.
- If you are concerned that we missed your home or if you need other information about the collection program, call our office at (804) 727-8770.

Disposal Facilities

There are two Henrico County - Public Use Areas where residents can take bagged leaves for free disposal during the bagged leaf season (Nov. 17 through Feb. 8). During all other times of the year, residents are charged \$3 per trip for disposal of bagged leaves. Non-bagged leaves and other vegetative yard waste are accepted year-round at the Public Use Areas at no charge. The Public Use Areas are located at 2075 Charles City Road and 10600 Fords

Country Lane and are open from 7:30 a.m. to 7:00 p.m., seven days per week. The facilities are closed on Thanksgiving, Christmas and New Year's Days. Please call for Christmas Eve hours. Please contact the facilities directly for additional information: Charles City Road Public Use Area at (804) 222-7739 and Springfield Road Public Use Area at (804) 747-1865.

Leaf Burning

It is illegal to burn leaves in most of the County. For more information, please call the Fire Marshal's office at (804) 501-4900.

Leaf Vacuuming Service November 10, 2014 - January 2, 2015 March 2, 2015 - March 27, 2015

Vacuum service is available for a charge of \$30 per order. Leaves eligible for vacuum collection must be accessible from the edge of the road and free from trash, sticks, and debris. We take vacuumed leaves to local nurseries that recycle the leaves through composting processes. Leaves mixed with trash, sticks and debris cannot be recycled. After your leaves have been placed at the edge of road, please place your order on our website at www.henrico.us/utility or by calling (804) 501-4275. Leaves will be collected as soon as possible after your order is received. Your patience is appreciated since weather conditions and heavy volumes of work sometimes cause a delay in processing orders.

Obstructing Roadways and Drainage

While we ask that your bags or your piles of loose leaves are accessible on the front of your property, it is never a good idea to block traffic lanes, parking or drainage ditches. Placement of leaves in the road or in the roadside ditch can restrict drainage, limit parking, create a traffic hazard and detract from the attractiveness of your neighborhood. County ordinances restrict the placement of leaves in these locations. Please help keep your neighborhood neat and attractive by properly setting out your leaves and promptly calling for leaf vacuuming.

Recycling Your Leaves

If you would like to recycle your leaves and nourish your lawn and garden, consider mulching and composting as an alternative. The Virginia Cooperative Extension Service recommends using shredded leaves as mulch. Placing your leaves through a shredder or a mulching mower provides excellent all purpose mulch that can be used around plants immediately. A two to three inch layer of leaves provides good weed control. Shredded leaves will decompose fairly quickly. Whole leaves can also be used. Another easy alternative is to compost your leaves. Leaf compost is an excellent soil amendment, adding humus and returning valuable nutrients to the soil. For more information on mulching or composting leaves, please call the Henrico County Extension Service at (804) 501-5160 or visit them online at www.ext.vt.edu.

Residential Leaf Collection Services



2014 - 2015

County of Henrico
Departments of Public Utilities &
Public Works
www.henrico.us/utility