



COUNTY OF HENRICO, VIRGINIA

MONUMENT DESCRIPTION



NAME OF STATION:

7

SET MAY 1998

VERTICAL CONTROL

NAVD 88 (Feet): ELEV. = 261.8
NAVD 88 (Meters): ELEV. = 79.80

HORIZONTAL CONTROL

Horizontal Control Based On NAD 83 (93):

VA STATE PLANE COORDINATES (SOUTH ZONE):

NORTHING (FEET): 3739934.321 NORTHING (METERS): 1139934.261
EASTING (FEET): 11749437.933 EASTING (METERS): 3581235.845

GEOGRAPHIC COORDINATE SYSTEM:

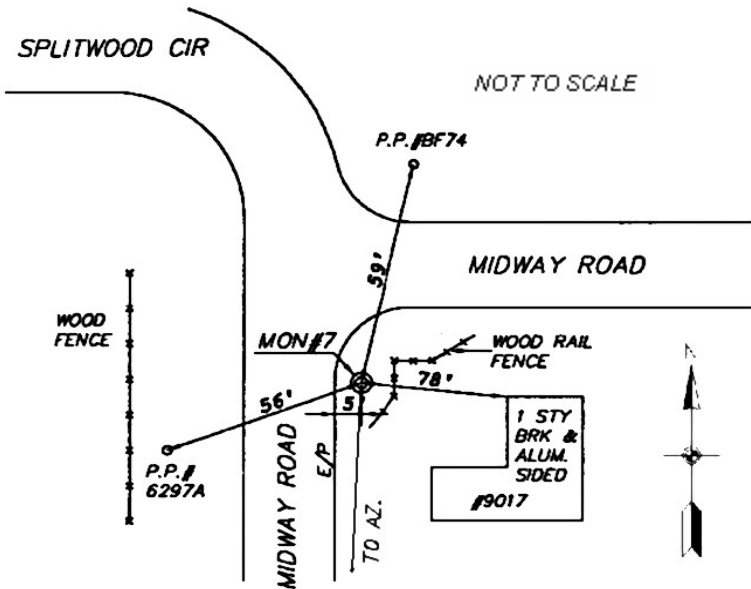
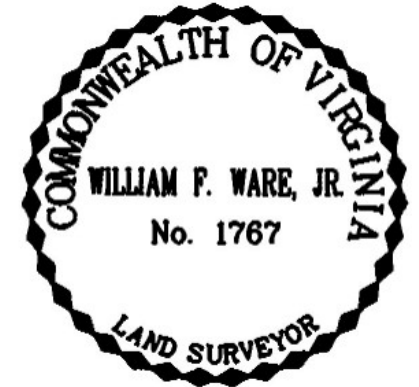
LATITUDE (Y): 37 35 26.55703
LONGITUDE (X): 77 34 48.48689

MONUMENT DESCRIPTION :

Station is a 2" Bronze Disk set in place in a 6" concrete monument.

To reach the station from the intersection of North Parham road and Midway Road, proceed west 0.5 miles along Midway Road to the station on the left in the grass. Station is set flush with the ground.

Azimuth Mark Monument #7A





COUNTY OF HENRICO, VIRGINIA

MONUMENT DESCRIPTION



NAME OF STATION:

7 A

SET JUNE 2000

VERTICAL CONTROL

NAVD 88 (Feet): ELEV. = 260.7
NAVD 88 (Meters): ELEV. = 79.46

HORIZONTAL CONTROL

Horizontal Control Based On NAD 83 (93):

VA STATE PLANE COORDINATES (SOUTH ZONE):

NORTHING (FEET): 3739065.731 NORTHING (METERS): 1139669.514
EASTING (FEET): 11749166.959 EASTING (METERS): 3581153.252

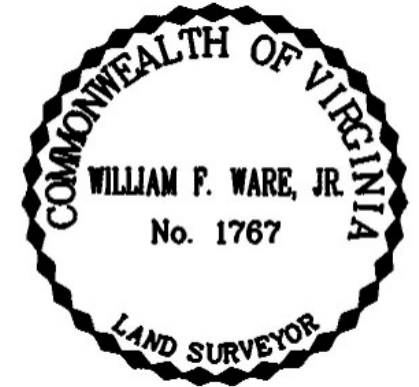
GEOGRAPHIC COORDINATE SYSTEM:

LATITUDE (Y): 37 35 17.99587
LONGITUDE (X): 77 34 51.95857

MONUMENT DESCRIPTION :

Station is a 2" Bronze Disk set in place in a 6" concrete monument.

To reach the station from the intersection of Derbyshire Road and North Parham Road, proceed west 0.4 miles along Derbyshire Road to the station on the right in the grass. Station is set flush with the ground.



NOT TO SCALE

MONUMENT 7A

