



COUNTY OF HENRICO, VIRGINIA

MONUMENT DESCRIPTION



NAME OF STATION:

11

SET MAY 1998

VERTICAL CONTROL

NAVD 88 (Feet): ELEV. = 171.4
NAVD 88 (Meters): ELEV. = 52.24

HORIZONTAL CONTROL

Horizontal Control Based On NAD 83 (93):

VA STATE PLANE COORDINATES (SOUTH ZONE):

NORTHING (FEET): 3744985.760 NORTHING (METERS): 1141473.943
EASTING (FEET): 11780800.493 EASTING (METERS): 3590795.172

GEOGRAPHIC COORDINATE SYSTEM:

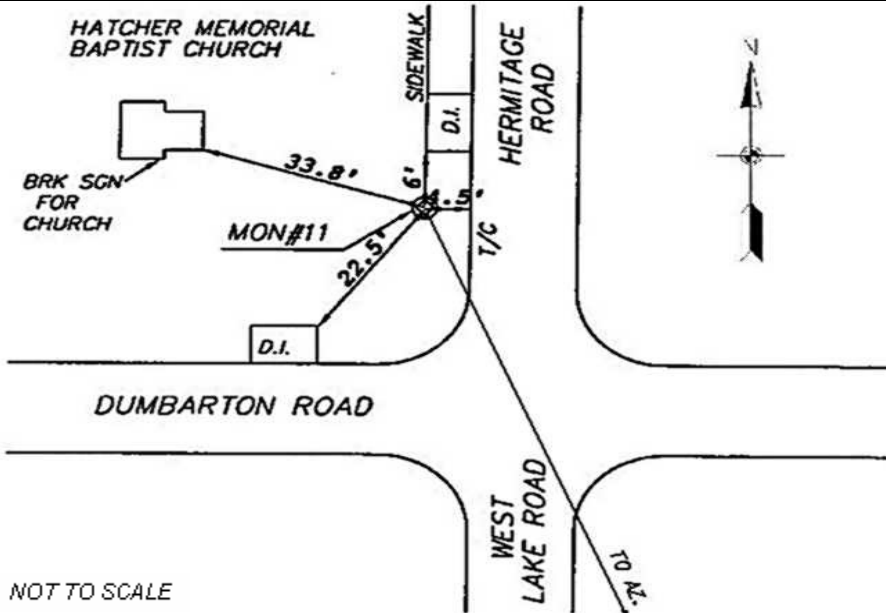
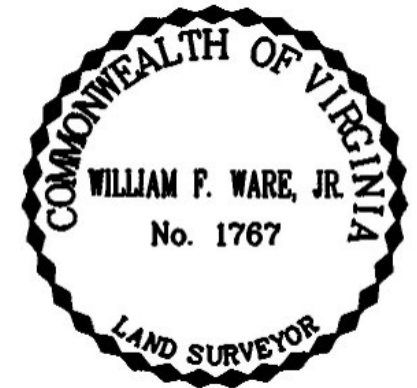
LATITUDE (Y): 37 36 13.29793
LONGITUDE (X): 77 28 18.15426

MONUMENT DESCRIPTION :

Station is a 2" Bronze Disk set in place in a 6" concrete monument

To reach the station from the intersection of Lakeside Avenue and Dumbarton Road, proceed west 0.25 miles along Dumbarton Road to the station on the right in the grass. Northwest corner of Dumbarton Road and Hermitage Road. Station is set 0.1 foot below grade.

Azimuth Mark Monument #11A





COUNTY OF HENRICO, VIRGINIA

MONUMENT DESCRIPTION



NAME OF STATION: **11 A** **SET JUNE 2000**

VERTICAL CONTROL

NAVD 88 (Feet): ELEV. = 165.3
NAVD 88 (Meters): ELEV. = 50.38

HORIZONTAL CONTROL

Horizontal Control Based On NAD 83 (93):

VA STATE PLANE COORDINATES (SOUTH ZONE):

NORTHING (FEET): 3744185.540 NORTHING (METERS): 1141230.035
EASTING (FEET): 11780930.566 EASTING (METERS): 3590834.819

GEOGRAPHIC COORDINATE SYSTEM:

LATITUDE (Y): 37 36 5.37272
LONGITUDE (X): 77 28 16.64631

MONUMENT DESCRIPTION :

Station is a 2" Bronze Disk set in place in a 6" concrete monument

To reach the station from the intersection of Lakeside Avenue and Dumbarton Road, proceed west 0.25 miles along Dumbarton Road to Westlake Avenue, then go south 0.1 mile on Westlake Avenue to the station on the left in the grass. Station is set flush with ground.

