



# COUNTY OF HENRICO, VIRGINIA

## MONUMENT DESCRIPTION



**NAME OF STATION:** **14** **SET MAY 1998**

### VERTICAL CONTROL

NAVD 88 (Feet): ELEV. = 187.3  
NAVD 88 (Meters): ELEV. = 57.09

### HORIZONTAL CONTROL

Horizontal Control Based On NAD 83 (93):

### VA STATE PLANE COORDINATES (SOUTH ZONE):

NORTHING (FEET): 3737918.707 NORTHING (METERS): 1139319.901  
EASTING (FEET): 11798973.162 EASTING (METERS): 3596334.213

### GEOGRAPHIC COORDINATE SYSTEM:

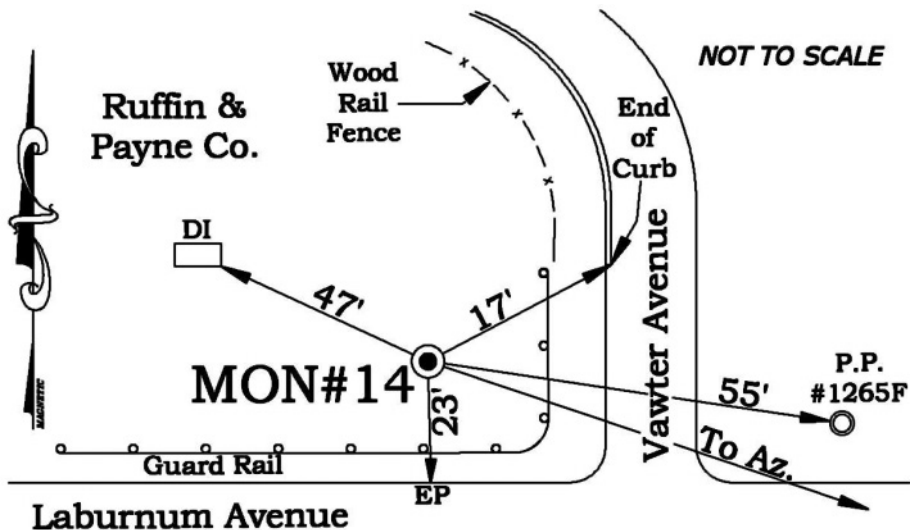
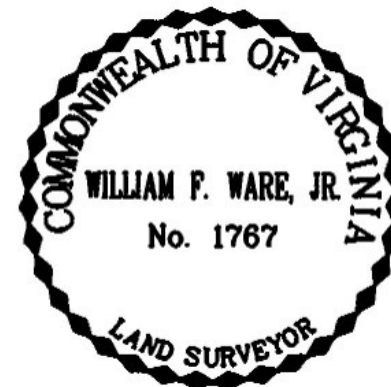
LATITUDE (Y): 37 35 1.41473  
LONGITUDE (X): 77 24 33.35404

### MONUMENT DESCRIPTION :

Station is a 2" Bronze Disk set in place in a 6" concrete monument

To reach the station from the intersection of Laburnum Avenue and Carolina Avenue, proceed east 0.35 miles along Laburnum Avenue to the intersection of Vawter Avenue. Station is in the northwest corner of the intersection in the grass. Station is set flush with the ground.

Azimuth Mark Monument #14A





# COUNTY OF HENRICO, VIRGINIA

## MONUMENT DESCRIPTION



**NAME OF STATION:** **14 A** **SET JUNE 2000**

### VERTICAL CONTROL

NAVD 88 (Feet): ELEV. = 201.1  
NAVD 88 (Meters): ELEV. = 61.30

### HORIZONTAL CONTROL

Horizontal Control Based On NAD 83 (93):

### VA STATE PLANE COORDINATES (SOUTH ZONE):

NORTHING (FEET): 3737080.927 NORTHING (METERS): 1139064.545  
EASTING (FEET): 11799596.061 EASTING (METERS): 3596524.073

### GEOGRAPHIC COORDINATE SYSTEM:

LATITUDE (Y): 37 34 53.06101  
LONGITUDE (X): 77 24 25.73640

### MONUMENT DESCRIPTION :

Station is a 2" Bronze Disk set in place in a 6" concrete monument

To reach the station from the intersection of Laburnum Avenue and Carolina Avenue, proceed east 0.5 mile along Laburnum Avenue to the station in the grass median. Station is set flush with the ground.

