



COUNTY OF HENRICO, VIRGINIA

MONUMENT DESCRIPTION



NAME OF STATION: **20** **SET MAY 1998**

VERTICAL CONTROL

NAVD 88 (Feet): ELEV. = 132.0
NAVD 88 (Meters): ELEV. = 40.23

HORIZONTAL CONTROL
Horizontal Control Based On NAD 83 (93):

VA STATE PLANE COORDINATES (SOUTH ZONE):

NORTHING (FEET): 3702678.629 NORTHING (METERS): 1128578.703
EASTING (FEET): 11856405.002 EASTING (METERS): 3613839.473

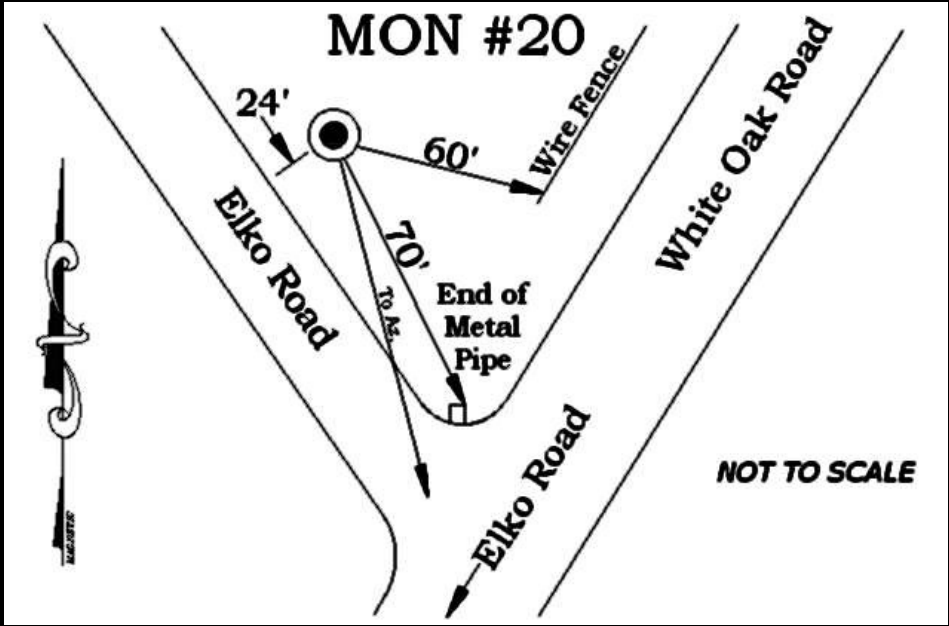
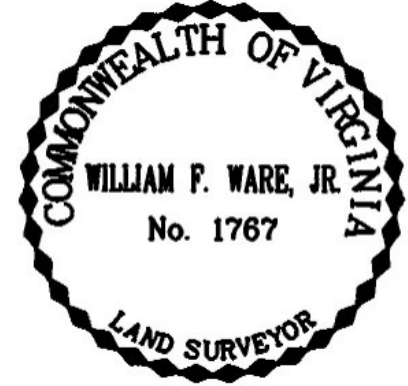
GEOGRAPHIC COORDINATE SYSTEM:
LATITUDE (Y): 37 29 5.87132
LONGITUDE (X): 77 12 45.87944

MONUMENT DESCRIPTION :

Station is a 2" Bronze Disk set in place in a 6" concrete monument

To reach the station from the intersection of Route 60 (Williamsburg Road) and Elko Road, proceed south 2.5 miles along Elko Road to the station on the left in the grass. Station is set 0.1 foot below the grade.

Azimuth Mark Monument #20A





COUNTY OF HENRICO, VIRGINIA

MONUMENT DESCRIPTION



NAME OF STATION: **20 A** **SET JUNE 2000**

VERTICAL CONTROL
NAVD 88 (Feet): ELEV. = 132.0
NAVD 88 (Meters): ELEV. = 40.23

HORIZONTAL CONTROL
Horizontal Control Based On NAD 83 (93):
VA STATE PLANE COORDINATES (SOUTH ZONE):
NORTHING (FEET): 3701755.024 NORTHING (METERS): 1128297.188
EASTING (FEET): 11856245.206 EASTING (METERS): 3613790.767
GEOGRAPHIC COORDINATE SYSTEM:
LATITUDE (Y): 37 28 56.76191
LONGITUDE (X): 77 12 48.01808

MONUMENT DESCRIPTION :
Station is a 2" Bronze Disk set in place in a 6" concrete monument

To reach the station from the intersection of Route 60 (Williamsburg Road) and Elko Road proceed, south 2.7 miles along Elko Road to the station on the right in the grass. Station is set flush with ground.

