



# COUNTY OF HENRICO, VIRGINIA

## MONUMENT DESCRIPTION



NAME OF STATION:

**23**

SET MAY 1998

### VERTICAL CONTROL

NAVD 88 (Feet): ELEV. = 143.4  
NAVD 88 (Meters): ELEV. = 43.71

### HORIZONTAL CONTROL

Horizontal Control Based On NAD 83 (93):

### VA STATE PLANE COORDINATES (SOUTH ZONE):

NORTHING (FEET): 3706226.468 NORTHING (METERS): 1129660.087  
EASTING (FEET): 11808078.737 EASTING (METERS): 3599109.598

### GEOGRAPHIC COORDINATE SYSTEM:

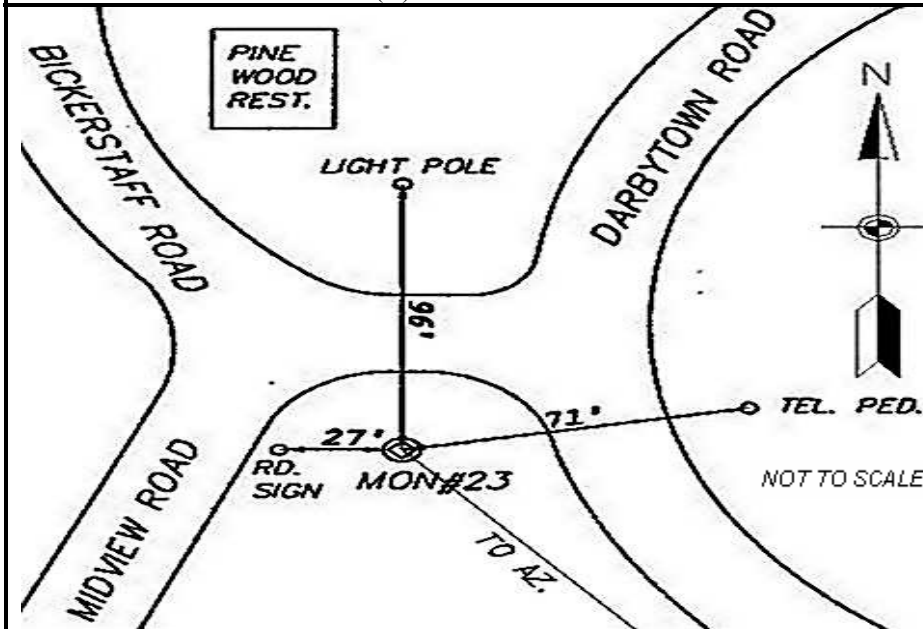
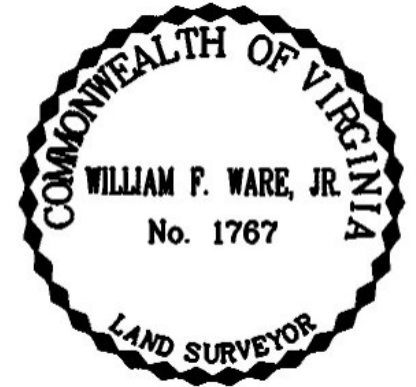
LATITUDE (Y): 37 29 47.04034  
LONGITUDE (X): 77 22 44.91270

### MONUMENT DESCRIPTION :

Station is a 2" Bronze Disk set in place in a 6" concrete monument

To reach the station from the intersection of Laburnum Avenue and Darbytown Road, proceed northwest 1.6 miles along Darbytown Road to the station on the left in the grass. Station is set flush with the ground.

Azimuth Mark Monument #23A





# COUNTY OF HENRICO, VIRGINIA

## MONUMENT DESCRIPTION



**NAME OF STATION:**                    **23 A**                    **SET JUNE 2000**

### VERTICAL CONTROL

NAVD 88 (Feet):    ELEV. = 151.4  
NAVD 88 (Meters): ELEV. = 46.15

### HORIZONTAL CONTROL

Horizontal Control Based On NAD 83 (93):

### VA STATE PLANE COORDINATES (SOUTH ZONE):

NORTHING (FEET): 3705611.390    NORTHING (METERS): 1129472.611  
EASTING (FEET): 11808676.039    EASTING (METERS): 3599291.656

### GEOGRAPHIC COORDINATE SYSTEM:

LATITUDE (Y): 37 29 40.88925  
LONGITUDE (X): 77 22 37.59199

### MONUMENT DESCRIPTION :

Station is a 2" Bronze Disk set in place in a 6" concrete monument

To reach the station from the intersection of Laburnum Avenue and Darbytown Road, proceed northwest 1.4 miles along Darbytown Road to the station on the left in the grass. Station is set flush with the ground.

