



COUNTY OF HENRICO, VIRGINIA

MONUMENT DESCRIPTION



NAME OF STATION:

24

SET MAY 1998

VERTICAL CONTROL

NAVD 88 (Feet): ELEV. = 122.6
 NAVD 88 (Meters): ELEV. = 37.37

HORIZONTAL CONTROL

Horizontal Control Based On NAD 83 (93):

VA STATE PLANE COORDINATES (SOUTH ZONE):

NORTHING (FEET): 3707879.749 NORTHING (METERS): 1130164.008
 EASTING (FEET): 11804301.513 EASTING (METERS): 3597958.297

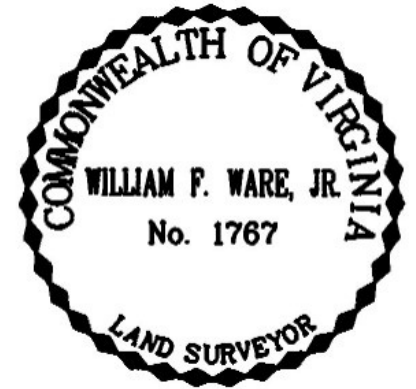
GEOGRAPHIC COORDINATE SYSTEM:

LATITUDE (Y): 37 30 03.82618
 LONGITUDE (X): 77 23 31.54094

MONUMENT DESCRIPTION :

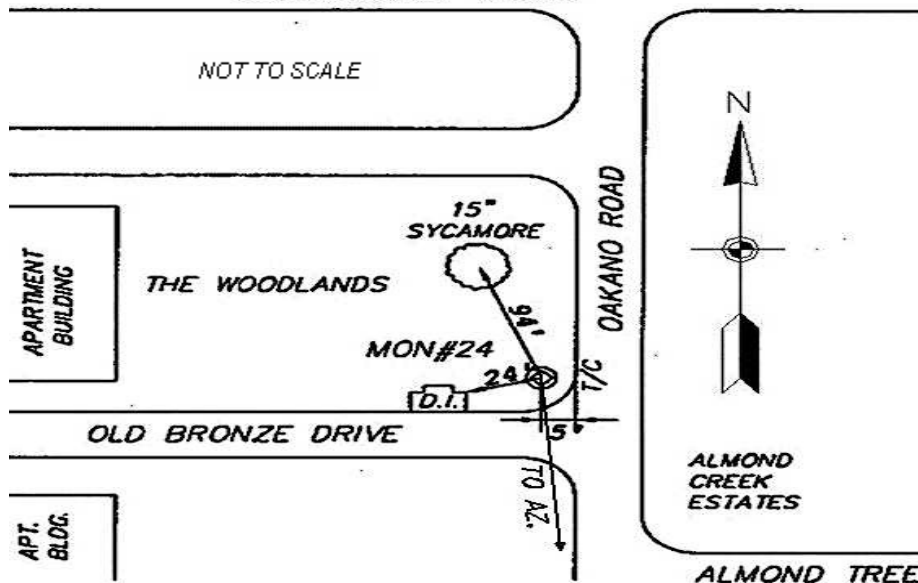
Station is a 2" Bronze Disk set in place in a 6" concrete monument

To reach the station from the intersection of Bickerstaff Road and Darbytown Road, proceed west 0.85 mile along Bickerstaff Road to Oakano Drive, then turn left on Oakano Drive to the intersection of Old Bronze Road. The station is at the northwest corner of the intersection. Station is set flush with the ground.
 Azimuth Mark Monument #24A



BICKERSTAFF ROAD

NOT TO SCALE





COUNTY OF HENRICO, VIRGINIA

MONUMENT DESCRIPTION



NAME OF STATION: **24 A** **SET JUNE 2000**

VERTICAL CONTROL

NAVD 88 (Feet): ELEV. = 133.1
NAVD 88 (Meters): ELEV. = 40.57

HORIZONTAL CONTROL

Horizontal Control Based On NAD 83 (93):

VA STATE PLANE COORDINATES (SOUTH ZONE):

NORTHING (FEET): 3707247.413 NORTHING (METERS): 1129971.272
EASTING (FEET): 11804350.633 EASTING (METERS): 3597973.269

GEOGRAPHIC COORDINATE SYSTEM:

LATITUDE (Y): 37 29 57.56895
LONGITUDE (X): 77 23 31.02351

MONUMENT DESCRIPTION :

Station is a 2" Bronze Disk set in place in a 6" concrete monument

To reach the station from the intersection of Bickerstaff Road and Darbytown Road, proceed west 0.85 mile along Bickerstaff Road to Oakano Drive, turn left on Oakano Drive, go 0.2 mile south to station on left in grass. Station is set flush with the ground.

