



# COUNTY OF HENRICO, VIRGINIA

## MONUMENT DESCRIPTION



NAME OF STATION:

**28**

SET MAY 1998

### VERTICAL CONTROL

NAVD 88 (Feet): ELEV. = 31.3  
NAVD 88 (Meters): ELEV. = 9.54

### HORIZONTAL CONTROL

Horizontal Control Based On NAD 83 (93):

### VA STATE PLANE COORDINATES (SOUTH ZONE):

NORTHING (FEET): 3678558.280    NORTHING (METERS): 1121226.806  
EASTING (FEET): 11832501.586    EASTING (METERS): 3606553.697

### GEOGRAPHIC COORDINATE SYSTEM:

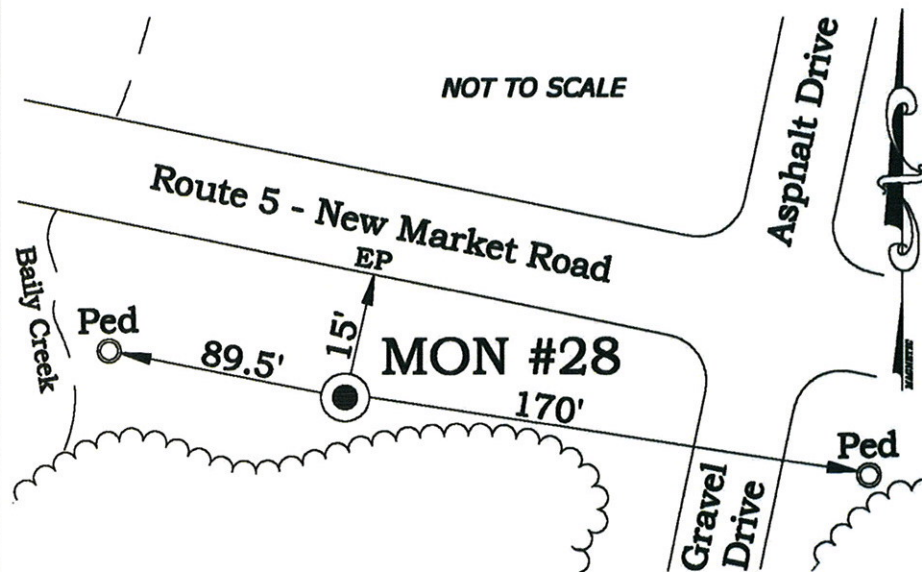
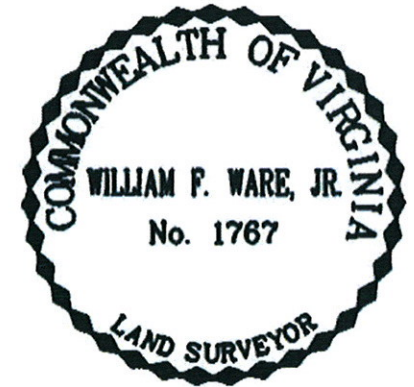
LATITUDE (Y): 37 25 10.52772  
LONGITUDE (X): 77 17 46.24804

### MONUMENT DESCRIPTION :

Station is a 2" Bronze Disk set in place in a 6" concrete monument

To reach the station from the intersection of Long Bridge Road and Route 5 (New Market Road), proceed east 0.55 mile along New Market Road to the station on the right in the grass. Station is set flush with the ground.

Azimuth Mark is 28AR.





# COUNTY OF HENRICO, VIRGINIA

## MONUMENT DESCRIPTION



NAME OF STATION: **28AR** RESET SEPTEMBER 2008

### VERTICAL CONTROL

NAVD 88 (Feet): ELEV. = 26.7  
NAVD 88 (Meters): ELEV. = 8.14

### HORIZONTAL CONTROL

Horizontal Control Based On NAD 83 (93):

### VA STATE PLANE COORDINATES (SOUTH ZONE):

NORTHING (FEET): 3679558.869    NORTHING (METERS): 1121531.786  
EASTING (FEET): 11831857.182    EASTING (METERS): 3606357.282

### GEOGRAPHIC COORDINATE SYSTEM:

LATITUDE (Y): 37 25 20.50116  
LONGITUDE (X): 77 17 54.07787

### MONUMENT DESCRIPTION :

Station is a 2" Bronze Disk set in place in a 6" concrete monument.

To reach the station from the intersection of Long Bridge Road and Route 5, go 0.35 mile east on Route 5. Station is on the right. You cannot see between station 28 and station 28AR.

Monument is 0.15' above ground level and is exposed.

