



COUNTY OF HENRICO, VIRGINIA

MONUMENT DESCRIPTION



NAME OF STATION: **31** **SET MAY 1998**

VERTICAL CONTROL

NAVD 88 (Feet): ELEV. = 137.6
NAVD 88 (Meters): ELEV. = 41.94

HORIZONTAL CONTROL

Horizontal Control Based On NAD 83 (93):

VA STATE PLANE COORDINATES (SOUTH ZONE):

NORTHING (FEET): 3689581.767 NORTHING (METERS): 1124586.772
EASTING (FEET): 11837706.134 EASTING (METERS): 3608140.046

GEOGRAPHIC COORDINATE SYSTEM:

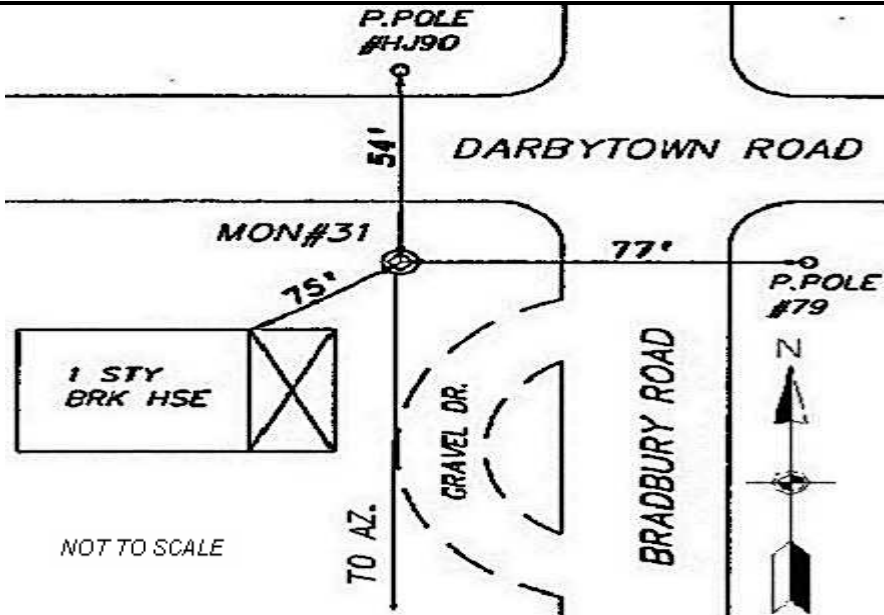
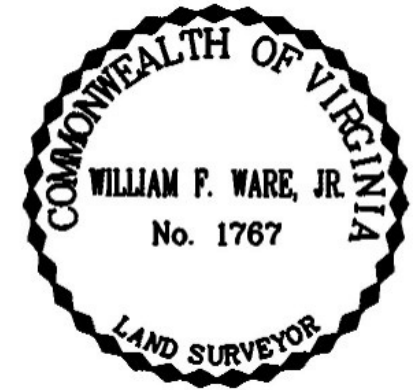
LATITUDE (Y): 37 26 58.84920
LONGITUDE (X): 77 16 39.96601

MONUMENT DESCRIPTION :

Station is a 2" Bronze Disk set in place in a 6" concrete monument

To reach the station from the intersection of Darbytown Road and Willis Church Road, proceed west 2.6 miles to Bradbury Road. Station is located at southwest corner of the intersection of Darbytown Road and Bradbury Road in the grass. The station is set flush with ground.

Azimuth Mark Monument #31A





COUNTY OF HENRICO, VIRGINIA

MONUMENT DESCRIPTION



NAME OF STATION: **31 A** **SET JUNE 2000**

VERTICAL CONTROL
NAVD 88 (Feet): ELEV. = 133.4
NAVD 88 (Meters): ELEV. = 40.66

HORIZONTAL CONTROL
Horizontal Control Based On NAD 83 (93):
VA STATE PLANE COORDINATES (SOUTH ZONE):
NORTHING (FEET): 3688863.462 NORTHING (METERS): 1124367.832
EASTING (FEET): 11837739.583 EASTING (METERS): 3608150.242
GEOGRAPHIC COORDINATE SYSTEM:
LATITUDE (Y): 37 26 51.74349
LONGITUDE (X): 77 16 39.66656

MONUMENT DESCRIPTION :
Station is a 2" Bronze Disk set in place in a 6" concrete monument

To reach the station from the intersection of Bradbury Knoll Drive and Bradbury Road, proceed north 0.08 mile along Bradbury Road to station on the left in the grass.
Station is set flush with ground.

