



COUNTY OF HENRICO, VIRGINIA

MONUMENT DESCRIPTION



NAME OF STATION:

39

SET MAY 1998

VERTICAL CONTROL

NAVD 88 (Feet): ELEV. = 46.9
 NAVD 88 (Meters): ELEV. = 14.30

HORIZONTAL CONTROL

Horizontal Control Based On NAD 83 (93):

VA STATE PLANE COORDINATES (SOUTH ZONE):

NORTHING (FEET): 3681455.018 NORTHING (METERS): 1122109.734
 EASTING (FEET): 11828990.289 EASTING (METERS): 3605483.451

GEOGRAPHIC COORDINATE SYSTEM:

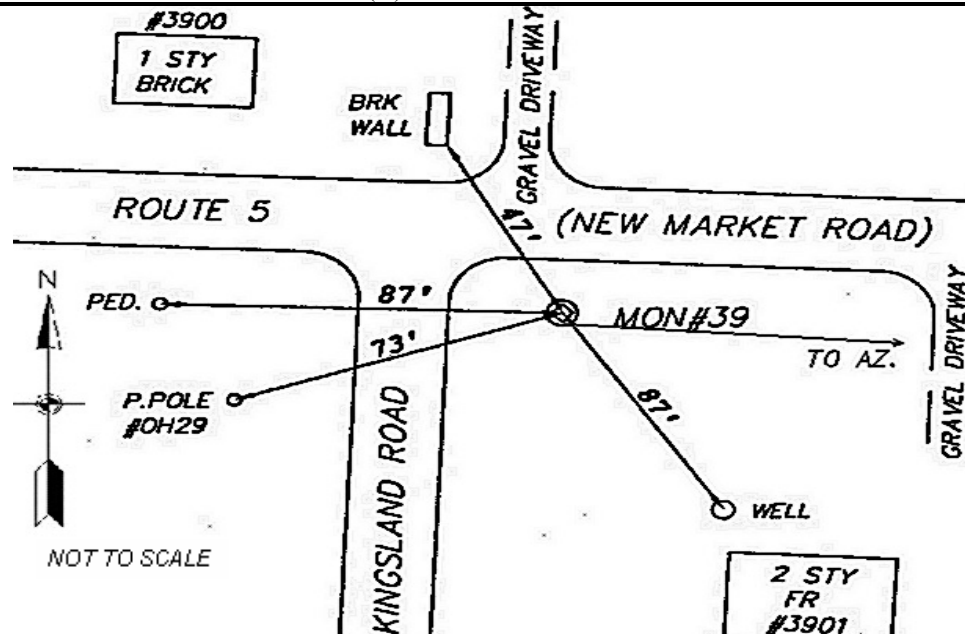
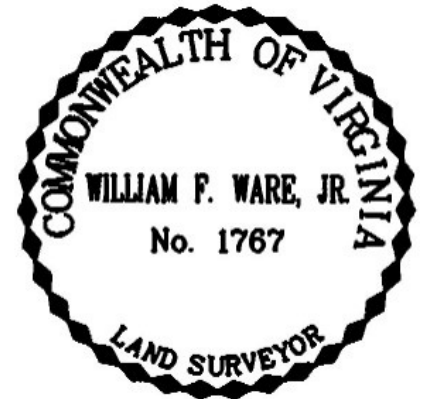
LATITUDE (Y): 37 25 39.60666
 LONGITUDE (X): 77 18 29.31906

MONUMENT DESCRIPTION :

Station is a 2" Bronze Disk set in place in a 6" concrete monument

To reach the station from the intersection of New Market Road and I-295, proceed east 1.6 miles along New Market Road to the station on the right in the grass. Station is set flush with ground.

Azimuth Mark Monument #39A





COUNTY OF HENRICO, VIRGINIA

MONUMENT DESCRIPTION



NAME OF STATION: **39 A** SET JUNE 2000

VERTICAL CONTROL

NAVD 88 (Feet): ELEV. = 35.8
NAVD 88 (Meters): ELEV. = 10.91

HORIZONTAL CONTROL

Horizontal Control Based On NAD 83 (93):

VA STATE PLANE COORDINATES (SOUTH ZONE):

NORTHING (FEET): 3681064.864 NORTHING (METERS): 1121990.815
EASTING (FEET): 11830217.267 EASTING (METERS): 3605857.435

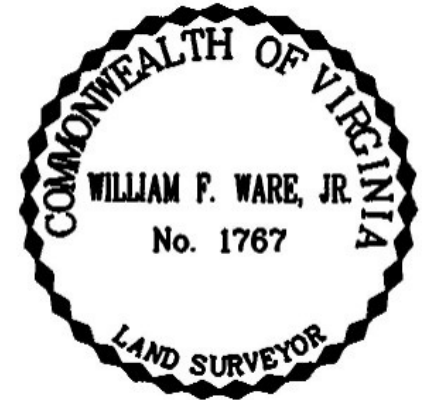
GEOGRAPHIC COORDINATE SYSTEM:

LATITUDE (Y): 37 25 35.59600
LONGITUDE (X): 77 18 14.16968

MONUMENT DESCRIPTION :

Station is a 2" Bronze Disk set in place in a 6" concrete monument

To reach the station from the intersection of Kingsland Road and New Market Road (Rte. 5), proceed southeast 0.22 mile along New Market Road to station on the right in the grass. Station is set flush with the ground.



NOT TO SCALE

