



COUNTY OF HENRICO, VIRGINIA

MONUMENT DESCRIPTION



NAME OF STATION:

51

SET MAY 1998

VERTICAL CONTROL

NAVD 88 (Feet): ELEV. = 141.1
NAVD 88 (Meters): ELEV. = 43.01

HORIZONTAL CONTROL

Horizontal Control Based On NAD 83 (93):

VA STATE PLANE COORDINATES (SOUTH ZONE):

NORTHING (FEET): 3699812.112 NORTHING (METERS): 1127704.987
EASTING (FEET): 11849924.990 EASTING (METERS): 3611864.361

GEOGRAPHIC COORDINATE SYSTEM:

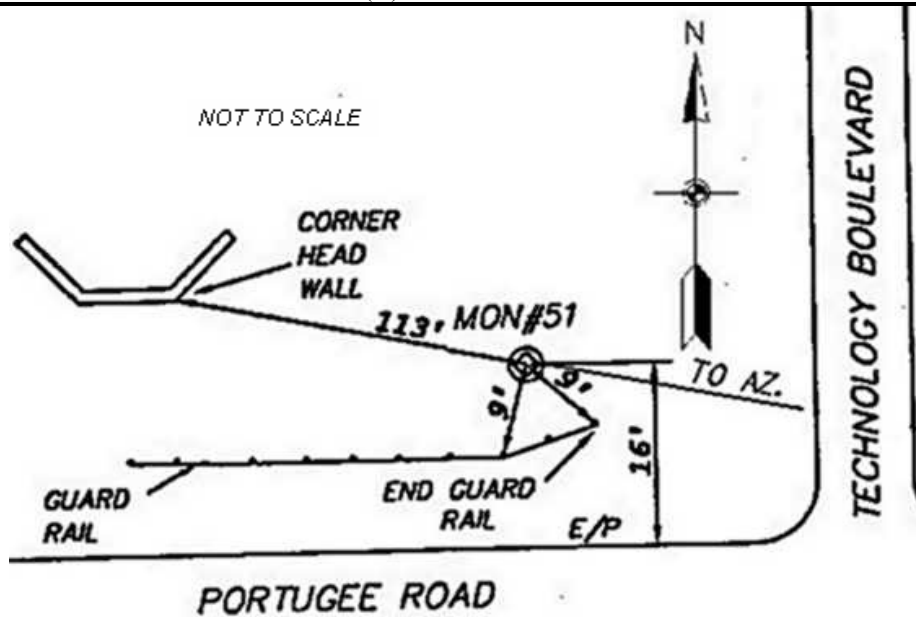
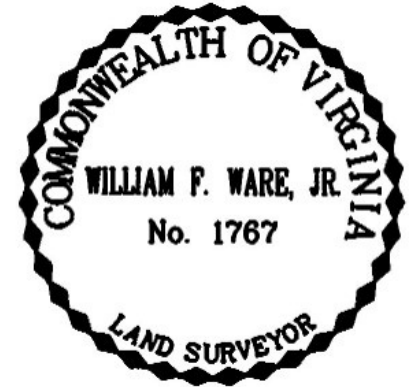
LATITUDE (Y): 37 28 38.39825
LONGITUDE (X): 77 14 6.74808

MONUMENT DESCRIPTION :

Station is a 2" Bronze Disk set in place in a 6" concrete monument

To reach the station from the intersection of Technology Boulevard and Portugee Road, proceed west 0.15 mile along Portugee Road to the station on the right in the grass. Station is set flush with the ground.

Azimuth Mark Monument #51A





COUNTY OF HENRICO, VIRGINIA

MONUMENT DESCRIPTION



NAME OF STATION: **51 A** **SET JUNE 2000**

VERTICAL CONTROL

NAVD 88 (Feet): ELEV. = 129.0
NAVD 88 (Meters): ELEV. = 39.32

HORIZONTAL CONTROL

Horizontal Control Based On NAD 83 (93):

VA STATE PLANE COORDINATES (SOUTH ZONE):

NORTHING (FEET): 3699497.258 NORTHING (METERS): 1127609.020
EASTING (FEET): 11850699.804 EASTING (METERS): 3612100.525

GEOGRAPHIC COORDINATE SYSTEM:

LATITUDE (Y): 37 28 35.18279
LONGITUDE (X): 77 13 57.18903

MONUMENT DESCRIPTION :

Station is a 2" Bronze Disk set in place in a 6" concrete monument

To reach the station from the intersection of Technology Boulevard and Portugee Road, proceed east 0.016 mile along Portugee Road to the station on the left in the grass. Station is set flush with the ground.

