



COUNTY OF HENRICO, VIRGINIA

MONUMENT DESCRIPTION



NAME OF STATION:

52

SET MAY 1998

VERTICAL CONTROL

NAVD 88 (Feet): ELEV. = 164.1
 NAVD 88 (Meters): ELEV. = 50.02

HORIZONTAL CONTROL

Horizontal Control Based On NAD 83 (93):

VA STATE PLANE COORDINATES (SOUTH ZONE):

NORTHING (FEET): 3708846.878 NORTHING (METERS): 1130458.789
 EASTING (FEET): 11848875.435 EASTING (METERS): 3611544.456

GEOGRAPHIC COORDINATE SYSTEM:

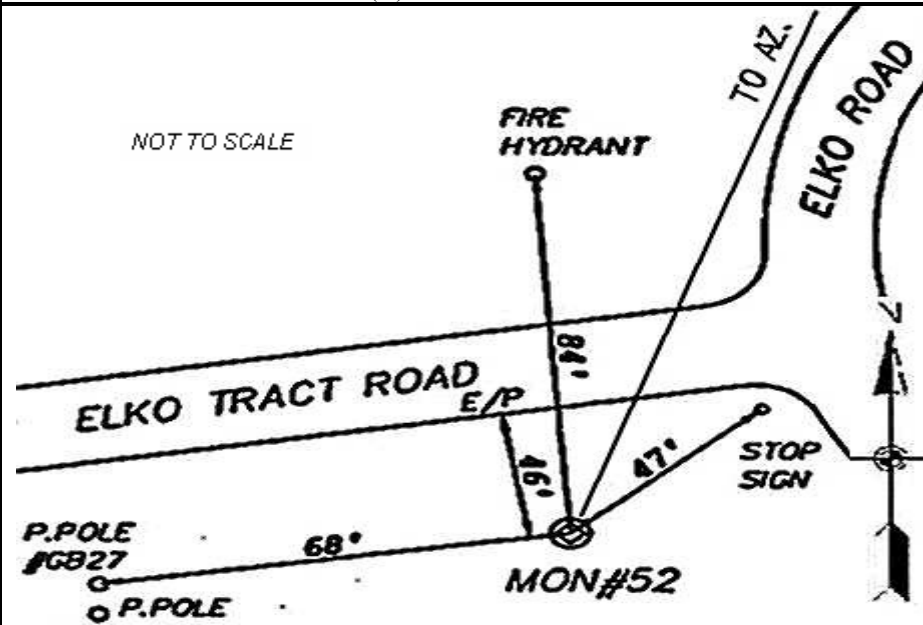
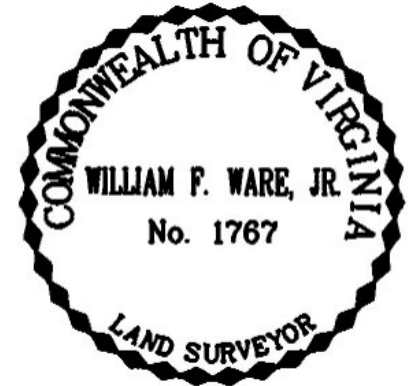
LATITUDE (Y): 37 30 7.85687
 LONGITUDE (X): 77 14 18.26988

MONUMENT DESCRIPTION :

Station is a 2" Bronze Disk set in place in a 6" concrete monument

To reach the station from the intersection of Elko Road and Route 60 (Williamsburg Road), proceed south 0.55 mile along Elko Road to the station on the right in the grass. Station is set flush with the ground.

Azimuth Mark Monument #52A





COUNTY OF HENRICO, VIRGINIA

MONUMENT DESCRIPTION



NAME OF STATION: **52 A** SET JUNE 2000

VERTICAL CONTROL

NAVD 88 (Feet): ELEV. = 155.0
NAVD 88 (Meters): ELEV. = 47.24

HORIZONTAL CONTROL

Horizontal Control Based On NAD 83 (93):

VA STATE PLANE COORDINATES (SOUTH ZONE):

NORTHING (FEET): 3709755.664 NORTHING (METERS): 1130735.788
EASTING (FEET): 11848461.826 EASTING (METERS): 3611418.388

GEOGRAPHIC COORDINATE SYSTEM:

LATITUDE (Y): 37 30 16.89593
LONGITUDE (X): 77 14 23.25182

MONUMENT DESCRIPTION :

Station is a 2" Bronze Disk set in place in a 6" concrete monument

To reach the station from the intersection of Elko Road and Route 60 (Williamsburg Road), proceed south 0.35 mile along Elko Road to the station on the right in the grass. Station is set flush with the ground.

