



COUNTY OF HENRICO, VIRGINIA

MONUMENT DESCRIPTION



NAME OF STATION:

62

SET MAY 1998

VERTICAL CONTROL

NAVD 88 (Feet): ELEV. = 29.6

NAVD 88 (Meters): ELEV. = 9.02

HORIZONTAL CONTROL

Horizontal Control Based On NAD 83 (93):

VA STATE PLANE COORDINATES (SOUTH ZONE):

NORTHING (FEET): 3670675.162 NORTHING (METERS): 1118824.027

EASTING (FEET): 11808003.595 EASTING (METERS): 3599086.694

GEOGRAPHIC COORDINATE SYSTEM:

LATITUDE (Y): 37 23 55.57113

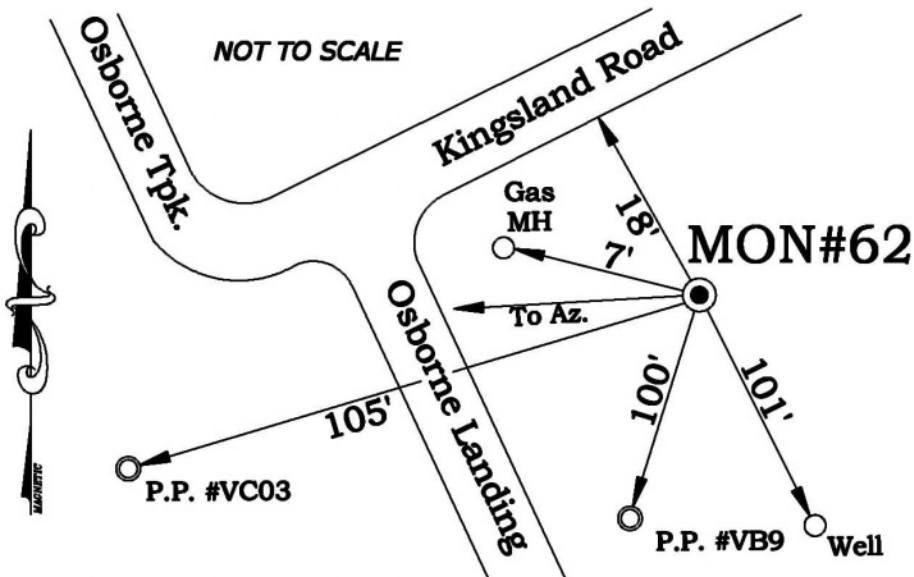
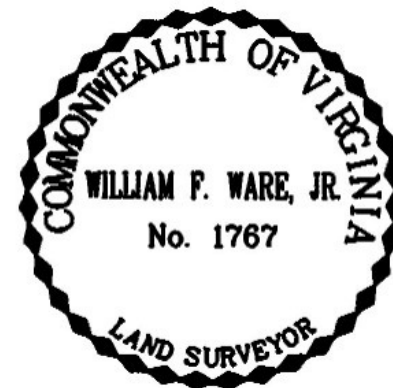
LONGITUDE (X): 77 22 51.07491

MONUMENT DESCRIPTION :

Station is a 2" Bronze Disk set in place in a 6" concrete monument.

To reach the station from the intersection of Battlefield Park Road and Osborne Turnpike, proceed southeast 1.3 miles along Osborne Turnpike to Kingsland Road, turn left on Kingsland Road about 0.1 mile to the station on the right in the grass. Station is set flush with the ground.

Azimuth Mark Monument #62A





COUNTY OF HENRICO, VIRGINIA

MONUMENT DESCRIPTION



NAME OF STATION: **62 A** SET JUNE 2000

VERTICAL CONTROL

NAVD 88 (Feet): ELEV. = 29.1
NAVD 88 (Meters): ELEV. = 8.87

HORIZONTAL CONTROL

Horizontal Control Based On NAD 83 (93):

VA STATE PLANE COORDINATES (SOUTH ZONE):

NORTHING (FEET): 3671353.098 NORTHING (METERS): 1119030.662
EASTING (FEET): 11807508.994 EASTING (METERS): 3598935.940

GEOGRAPHIC COORDINATE SYSTEM:

LATITUDE (Y): 37 24 2.33154
LONGITUDE (X): 77 22 57.10467

MONUMENT DESCRIPTION :

Station is a 2" Bronze Disk set in place in a 6" concrete monument.

To reach the station from the intersection of Battlefield Park Road and Osborne Turnpike, proceed southeast 1.1 miles along Osborne Turnpike to station on the left in the grass. Station is set flush with the ground.

