



COUNTY OF HENRICO, VIRGINIA

MONUMENT DESCRIPTION



NAME OF STATION:

69

SET MAY 1998

VERTICAL CONTROL

NAVD 88 (Feet): ELEV. = 139.9
 NAVD 88 (Meters): ELEV. = 42.64

HORIZONTAL CONTROL

Horizontal Control Based On NAD 83 (93):

VA STATE PLANE COORDINATES (SOUTH ZONE):

NORTHING (FEET): 3694530.719 NORTHING (METERS): 1126095.215
 EASTING (FEET): 11816953.307 EASTING (METERS): 3601814.572

GEOGRAPHIC COORDINATE SYSTEM:

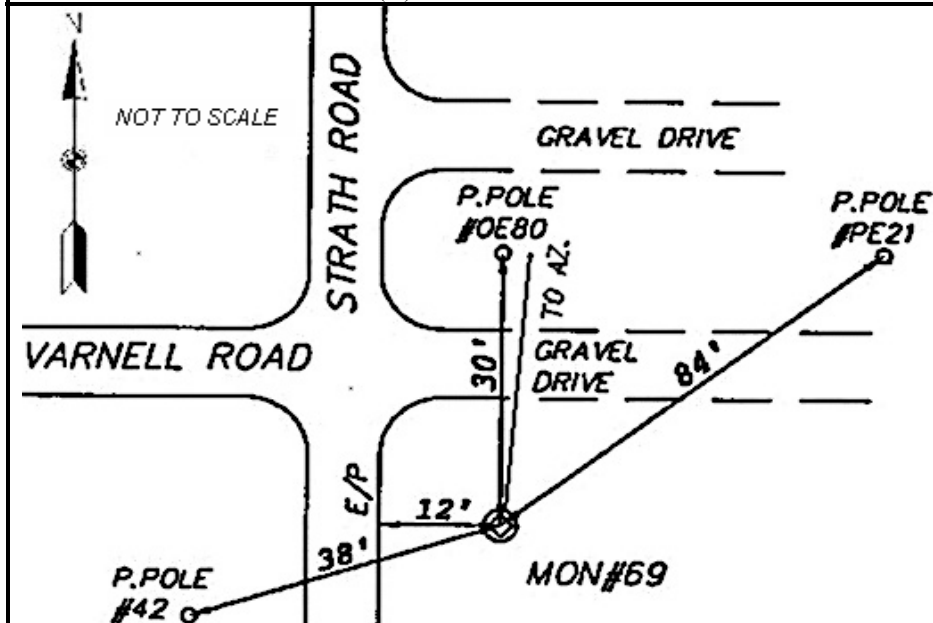
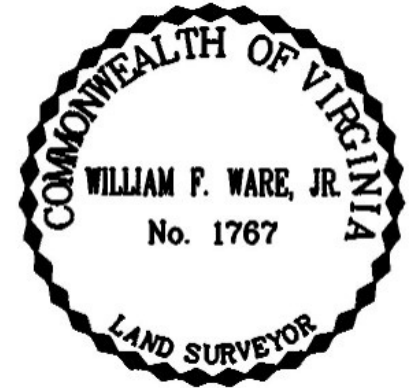
LATITUDE (Y): 37 27 50.35552
 LONGITUDE (X): 77 20 56.56423

MONUMENT DESCRIPTION :

Station is a 2" Bronze Disk set in place in a 6" concrete monument.

To reach the station from the intersection of Darbytown Road and Strath Road, proceed south 0.9 mile along Strath Road to the station on the left in the grass. Station is set flush with the ground.

Azimuth Mark Monument #69A





COUNTY OF HENRICO, VIRGINIA

MONUMENT DESCRIPTION



NAME OF STATION:

69 A

SET JUNE 2000

VERTICAL CONTROL

NAVD 88 (Feet): ELEV. = 138.5
NAVD 88 (Meters): ELEV. = 42.21

HORIZONTAL CONTROL

Horizontal Control Based On NAD 83 (93):

VA STATE PLANE COORDINATES (SOUTH ZONE):

NORTHING (FEET): 3695222.616 NORTHING (METERS): 1126306.106
EASTING (FEET): 11816954.636 EASTING (METERS): 3601814.977

GEOGRAPHIC COORDINATE SYSTEM:

LATITUDE (Y): 37 27 57.19575
LONGITUDE (X): 77 20 56.44311

MONUMENT DESCRIPTION :

Station is a 2" Bronze Disk set in place in a 6" concrete monument.

To reach the station from the intersection of Darbytown Road and Strath Road, proceed south 0.7 mile along Strath Road to the station on the left in the grass. Station is set flush with the ground.

