



# COUNTY OF HENRICO, VIRGINIA

## MONUMENT DESCRIPTION



**NAME OF STATION**    **77R**    SET June 2013

**VERTICAL CONTROL**  
NAVD 88 (FEET): ELEVATION= 161.1  
NAVD 88 (METERS): ELEVATION = 49.1

**HORIZONTAL CONTROL**  
HORIZONTAL CONTROL BASED ON NAD 83 (93):

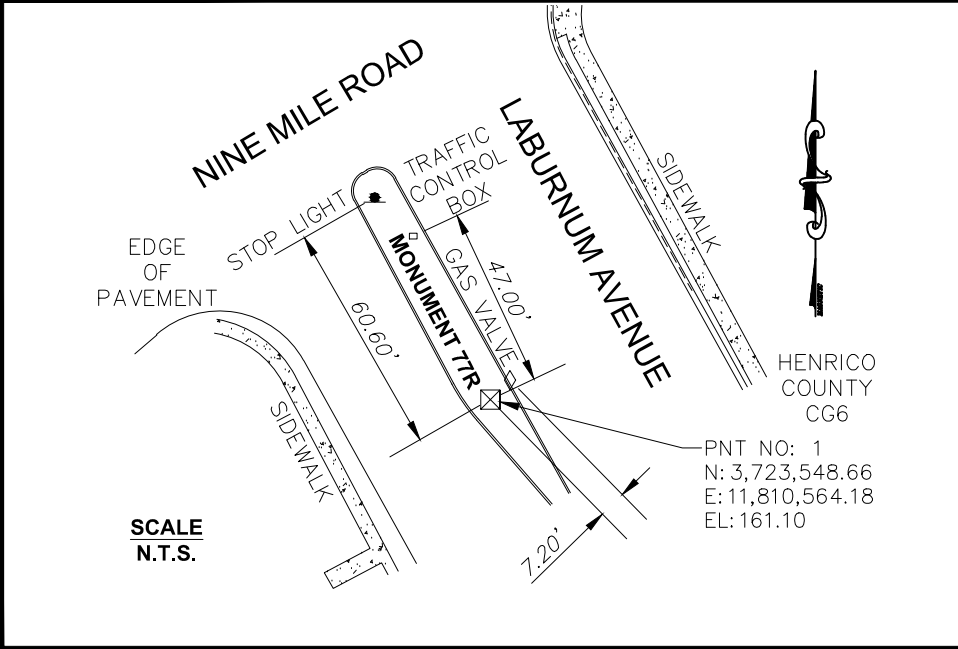
**VIRGINIA STATE PLANE COORDINATES (SOUTH ZONE)**  
NORTHING (FEET) : 3723548.662    NORTHING (METERS): 1134937.5959  
EASTING (FEET) : 11810564.179    EASTING (METERS): 3599859.8466

**GEOGRAPHIC COORDINATE SYSTEM:**  
LATITUDE (Y): 37°32'38.0006"N  
LONGITUDE (X): 77°22'11.4994"W

**MONUMENT DESCRIPTION :**  
Lead Plug set in 6" concrete monument

Monument is located southeast of the intersection of Laburnum Avenue and Nine Mile road in grass median on Laburnum Avenue.

Azimuth Mark Monument #77A





# COUNTY OF HENRICO, VIRGINIA

## MONUMENT DESCRIPTION



NAME OF STATION:

**77A**

SET JUNE 2000

### VERTICAL CONTROL

NAVD 88 (Feet): ELEV. = 155.1  
NAVD 88 (Meters): ELEV. = 47.27

### HORIZONTAL CONTROL

Horizontal Control Based On NAD 83 (93):

### VA STATE PLANE COORDINATES (SOUTH ZONE):

NORTHING (FEET): 3723121.956 NORTHING (METERS): 1134809.842  
EASTING (FEET): 11810864.270 EASTING (METERS): 3599958.630

### GEOGRAPHIC COORDINATE SYSTEM:

LATITUDE (Y): 37 32 33.74653  
LONGITUDE (X): 77 22 7.83691

### MONUMENT DESCRIPTION :

Station is a 2" Bronze Disk set in place in a 6" concrete monument.

From the intersection of Laburnum Avenue and Nine Mile road, go 0.2 mile south on Laburnum Avenue to the station on the left in the grass. Station is set flush with the ground.

