



COUNTY OF HENRICO, VIRGINIA

MONUMENT DESCRIPTION



NAME OF STATION:

85

SET MAY 1998

VERTICAL CONTROL

NAVD 88 (Feet): ELEV. = 188.2
NAVD 88 (Meters): ELEV. = 57.36

HORIZONTAL CONTROL

Horizontal Control Based On NAD 83 (93):

VA STATE PLANE COORDINATES (SOUTH ZONE):

NORTHING (FEET): 3735583.595 NORTHING (METERS): 1138608.157
EASTING (FEET): 11802800.792 EASTING (METERS): 3597500.877

GEOGRAPHIC COORDINATE SYSTEM:

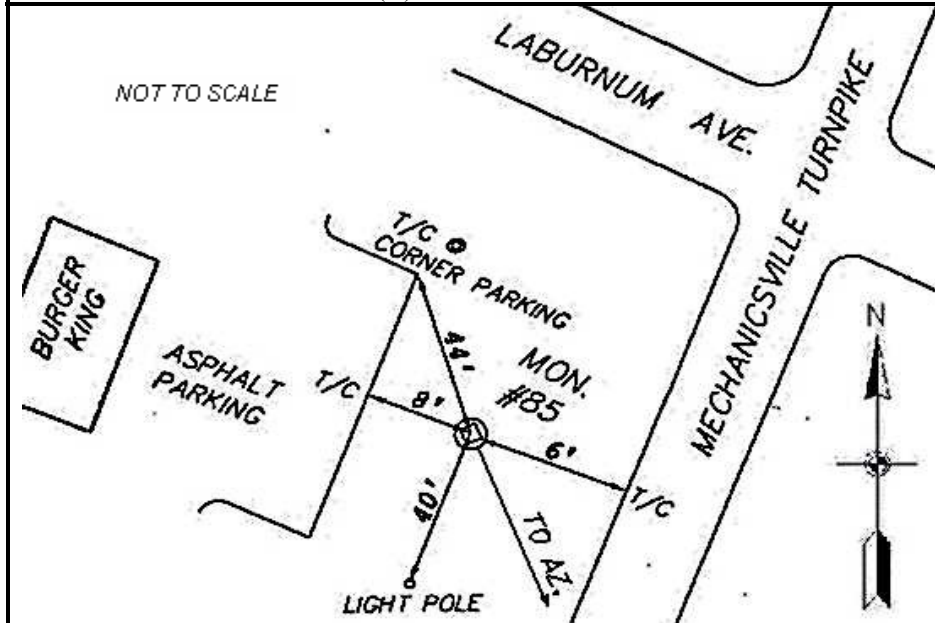
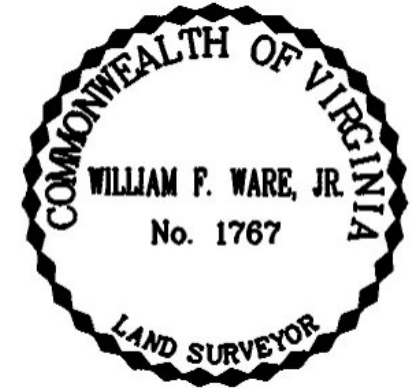
LATITUDE (Y): 37 34 37.88937
LONGITUDE (X): 77 23 46.14356

MONUMENT DESCRIPTION :

Station is a 2" Bronze Disk set in place in a 6" concrete monument.

From the intersection of Laburnum Avenue and Mechanicsville Turnpike (Route 360), proceed 124 feet south on Mechanicsville Turnpike to the station on the right in the grass. Station is set flush with the ground.

Azimuth Mark Monument #85A





COUNTY OF HENRICO, VIRGINIA

MONUMENT DESCRIPTION



NAME OF STATION:

85A

SET JUNE 2000

VERTICAL CONTROL

NAVD 88 (Feet): ELEV. = 187.1
 NAVD 88 (Meters): ELEV. = 57.03

HORIZONTAL CONTROL

Horizontal Control Based On NAD 83 (93):

VA STATE PLANE COORDINATES (SOUTH ZONE):

NORTHING (FEET): 3734977.944 NORTHING (METERS): 1138423.554
 EASTING (FEET): 11802543.186 EASTING (METERS): 3597422.358

GEOGRAPHIC COORDINATE SYSTEM:

LATITUDE (Y): 37 34 31.93152
 LONGITUDE (X): 77 23 49.43136

MONUMENT DESCRIPTION :

Station is a 2" Bronze Disk set in place in a 6" concrete monument.

To reach the station from the intersection of Laburnum Avenue and Mechanicsville Turnpike (Route 360), proceed south 0.12 miles along Mechanicsville Turnpike to the station in the grass median. Station is set flush with the ground.

