



# COUNTY OF HENRICO, VIRGINIA

## MONUMENT DESCRIPTION



**NAME OF STATION:** **90** **SET MAY 1998**

### VERTICAL CONTROL

NAVD 88 (Feet): ELEV. = 164.6  
 NAVD 88 (Meters): ELEV. = 50.17

### HORIZONTAL CONTROL

Horizontal Control Based On NAD 83 (93):

### VA STATE PLANE COORDINATES (SOUTH ZONE):

NORTHING (FEET): 3762862.649 NORTHING (METERS): 1146922.829  
 EASTING (FEET): 11784013.268 EASTING (METERS): 3591774.428

### GEOGRAPHIC COORDINATE SYSTEM:

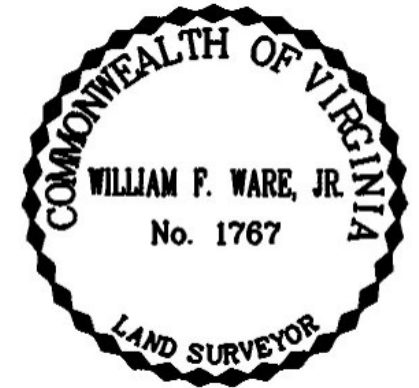
LATITUDE (Y): 37 39 9.68462  
 LONGITUDE (X): 77 27 35.78438

### MONUMENT DESCRIPTION :

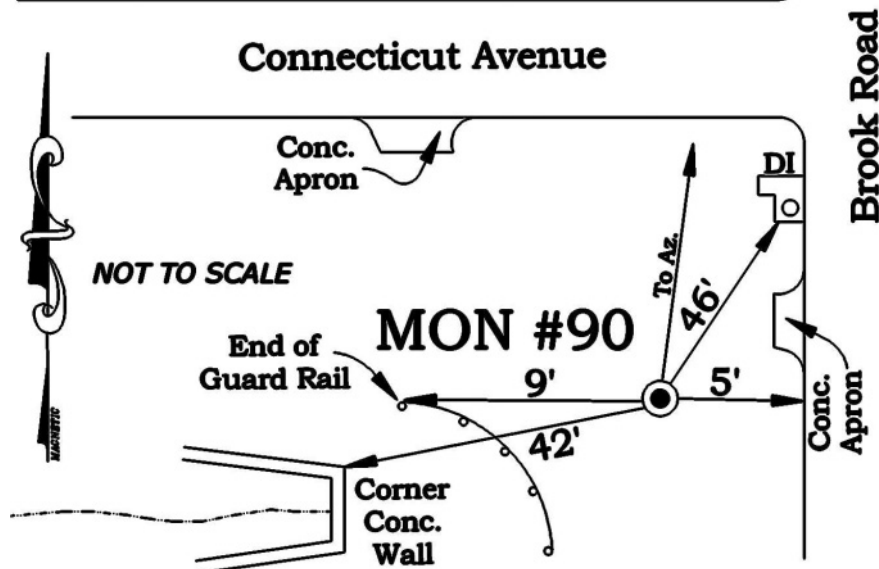
Station is a 2" Bronze Disk set in place in a 6" concrete monument.

To reach the station from the intersection of Parham Road and Brook Road, proceed north 1.25 miles along Brook Road to the station on the left in the grass. Station is set flush with the ground.

Azimuth Mark Monument #90B



**Va. State Police Bldg.**





# COUNTY OF HENRICO, VIRGINIA

## MONUMENT DESCRIPTION



NAME OF STATION: **90B**

SET JANUARY 2004

### VERTICAL CONTROL

NAVD 88 (Feet): ELEV. = 175.0  
NAVD 88 (Meters): ELEV. = 53.34

### HORIZONTAL CONTROL

Horizontal Control Based On NAD 83 (93):

### VA STATE PLANE COORDINATES (SOUTH ZONE):

NORTHING (FEET): 3764126.995      NORTHING (METERS): 1147308.203  
EASTING (FEET): 11784066.907      EASTING (METERS): 3591790.777

### GEOGRAPHIC COORDINATE SYSTEM:

LATITUDE (Y): 37 39 22.17828  
LONGITUDE (X): 77 27 34.94417

### MONUMENT DESCRIPTION :

Station is a 24" Rebar with cap.

To reach the station from the intersection of Parham Road and Brook Road, proceed north 1.45 miles along Brook Road to the station on the right in the grass, north of EBL entrance to Highway 295. Station is set flush with the ground.

