



COUNTY OF HENRICO, VIRGINIA

MONUMENT DESCRIPTION



NAME OF STATION:

92

SET MAY 1998

VERTICAL CONTROL

NAVD 88 (Feet): ELEV. = 212.2
 NAVD 88 (Meters): ELEV. = 64.68

HORIZONTAL CONTROL

Horizontal Control Based On NAD 83 (93):

VA STATE PLANE COORDINATES (SOUTH ZONE):

NORTHING (FEET): 3775366.329 NORTHING (METERS): 1150733.959
 EASTING (FEET): 11771861.082 EASTING (METERS): 3588070.434

GEOGRAPHIC COORDINATE SYSTEM:

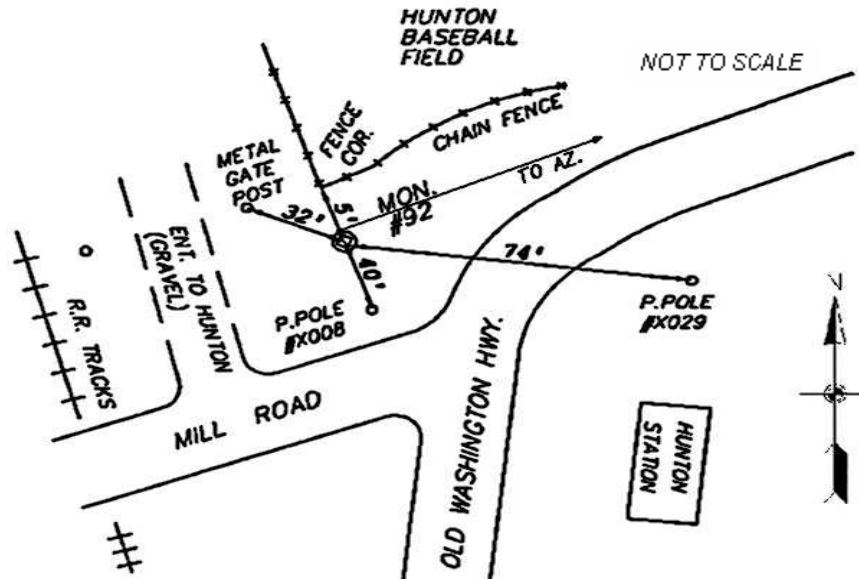
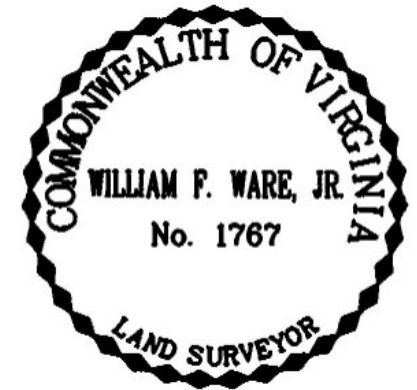
LATITUDE (Y): 37 41 14.59473
 LONGITUDE (X): 77 30 5.24393

MONUMENT DESCRIPTION :

Station is a 2" Bronze Disk set in place in a 6" concrete monument.

To reach the station from the intersection of Greenwood Road and Old Washington Highway, proceed west 0.15 mile along Old Washington Highway to the station on the right in the grass. Station is set flush with the ground.

Azimuth Mark Monument #92A





COUNTY OF HENRICO, VIRGINIA

MONUMENT DESCRIPTION



NAME OF STATION:

92A

SET JUNE 2000

VERTICAL CONTROL

NAVD 88 (Feet): ELEV. = 214.4
NAVD 88 (Meters): ELEV. = 65.35

HORIZONTAL CONTROL

Horizontal Control Based On NAD 83 (93):

VA STATE PLANE COORDINATES (SOUTH ZONE):

NORTHING (FEET): 3775716.322 NORTHING (METERS): 1150840.637
EASTING (FEET): 11772431.296 EASTING (METERS): 3588244.236

GEOGRAPHIC COORDINATE SYSTEM:

LATITUDE (Y): 37 41 17.99510
LONGITUDE (X): 77 29 58.10428

MONUMENT DESCRIPTION :

Station is a 2" Bronze Disk set in place in a 6" concrete monument.

The station located on the south corner of Greenwood Road and Old Washington Highway. Station is set flush with the ground.

