



COUNTY OF HENRICO, VIRGINIA

MONUMENT DESCRIPTION



NAME OF STATION:

94

SET MAY 1998

VERTICAL CONTROL

NAVD 88 (Feet): ELEV. = 201.7

NAVD 88 (Meters): ELEV. = 61.48

HORIZONTAL CONTROL

Horizontal Control Based On NAD 83 (93):

VA STATE PLANE COORDINATES (SOUTH ZONE):

NORTHING (FEET): 3762944.026 NORTHING (METERS): 1146947.633
EASTING (FEET): 11770967.188 EASTING (METERS): 3587797.975

GEOGRAPHIC COORDINATE SYSTEM:

LATITUDE (Y): 37 39 11.87935

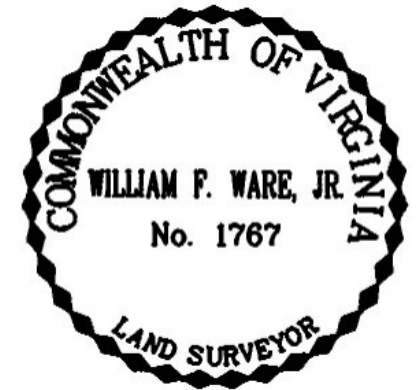
LONGITUDE (X): 77 30 17.99287

MONUMENT DESCRIPTION :

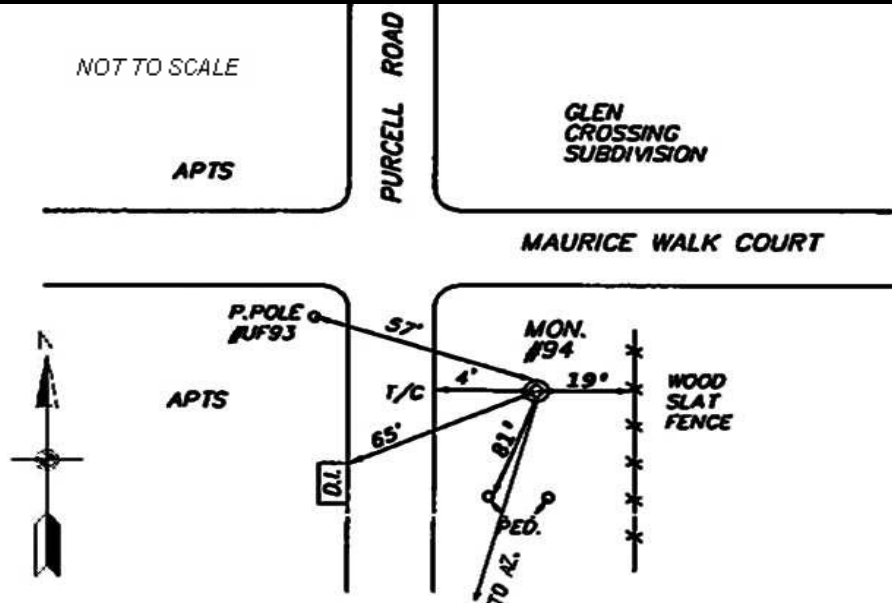
The Station is a 2" Bronze Disk set in place in a 6" concrete monument.

To reach the station from the intersection of Mountain Road and Purcell Road, proceed south 0.85 mile along Purcell Road to the station on the left in the grass. Station is set flush with the ground.

Azimuth Mark Monument #94A



NOT TO SCALE





COUNTY OF HENRICO, VIRGINIA

MONUMENT DESCRIPTION



NAME OF STATION:

94A

SET JUNE 2000

VERTICAL CONTROL

NAVD 88 (Feet): ELEV. = 203.7

NAVD 88 (Meters): ELEV. = 62.09

HORIZONTAL CONTROL

Horizontal Control Based On NAD 83 (93):

VA STATE PLANE COORDINATES (SOUTH ZONE):

NORTHING (FEET): 3762026.550 NORTHING (METERS): 1146667.986
EASTING (FEET): 11770829.185 EASTING (METERS): 3587755.911

GEOGRAPHIC COORDINATE SYSTEM:

LATITUDE (Y): 37 39 2.82339
LONGITUDE (X): 77 30 19.82904

MONUMENT DESCRIPTION :

The Station is a 2" Bronze Disk set in place in a 6" concrete monument.

To reach the station from the intersection of Mountain Road and Purcell Road, proceed south 1.0 mile along Purcell Road to the station on the right in the grass. Station is set flush with the ground.

