



COUNTY OF HENRICO, VIRGINIA

MONUMENT DESCRIPTION



NAME OF STATION:

96

SET MAY 1998

VERTICAL CONTROL

NAVD 88 (Feet): ELEV. = 204.3
NAVD 88 (Meters): ELEV. = 62.27

HORIZONTAL CONTROL

Horizontal Control Based On NAD 83 (93):

VA STATE PLANE COORDINATES (SOUTH ZONE):

NORTHING (FEET): 3758221.421 NORTHING (METERS): 1145508.180
EASTING (FEET): 11775010.274 EASTING (METERS): 3589030.310

GEOGRAPHIC COORDINATE SYSTEM:

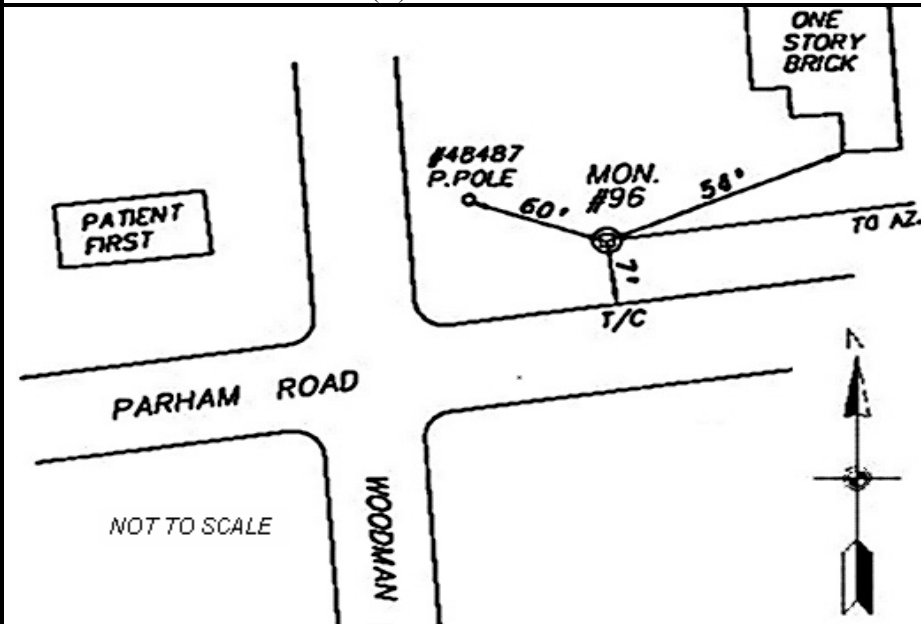
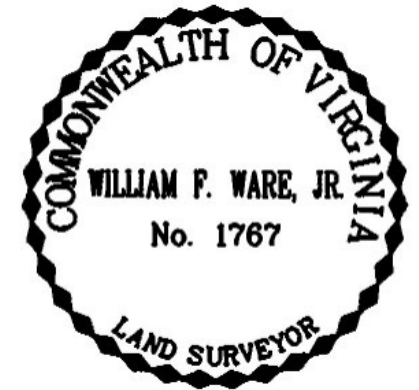
LATITUDE (Y): 37 38 24.76652
LONGITUDE (X): 77 29 28.34704

MONUMENT DESCRIPTION :

Station is a 2" Bronze Disk set in place in a 6" concrete monument.

From the intersection of Woodman Road and Parham Road, proceed east 85 feet on Parham Road to the station on the left in the grass. Station is set flush with the ground.

Azimuth Mark Monument #96A





COUNTY OF HENRICO, VIRGINIA

MONUMENT DESCRIPTION



NAME OF STATION:

96A

SET JUNE 2000

VERTICAL CONTROL

NAVD 88 (Feet): ELEV. = 207.9

NAVD 88 (Meters): ELEV. = 63.37

HORIZONTAL CONTROL

Horizontal Control Based On NAD 83 (93):

VA STATE PLANE COORDINATES (SOUTH ZONE):

NORTHING (FEET): 3758507.793 NORTHING (METERS): 1145595.467
EASTING (FEET): 11776006.369 EASTING (METERS): 3589333.920

GEOGRAPHIC COORDINATE SYSTEM:

LATITUDE (Y): 37 38 27.49223

LONGITUDE (X): 77 29 15.92518

MONUMENT DESCRIPTION :

Station is a 2" Bronze Disk set in place in a 6" concrete monument.

To reach the station from the intersection of East Parham Road and Woodman Road, proceed east 0.21 mile along East Parham Road to the station on the left in the grass. Station is set flush with the ground.

