



COUNTY OF HENRICO, VIRGINIA

MONUMENT DESCRIPTION



NAME OF STATION: **99** **SET MAY 1998**

VERTICAL CONTROL

NAVD 88 (Feet): ELEV. = 217.9
 NAVD 88 (Meters): ELEV. = 66.42

HORIZONTAL CONTROL

Horizontal Control Based On NAD 83 (93):

VA STATE PLANE COORDINATES (SOUTH ZONE):

NORTHING (FEET): 3738349.101 NORTHING (METERS): 1139451.085
 EASTING (FEET): 11775155.375 EASTING (METERS): 3589074.537

GEOGRAPHIC COORDINATE SYSTEM:

LATITUDE (Y): 37 35 8.28797
 LONGITUDE (X): 77 29 29.18266

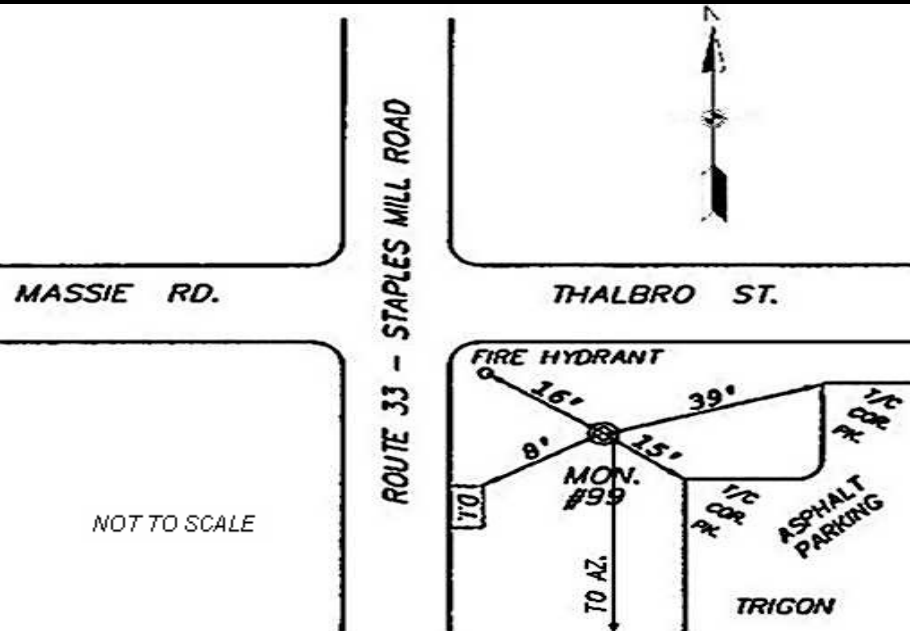
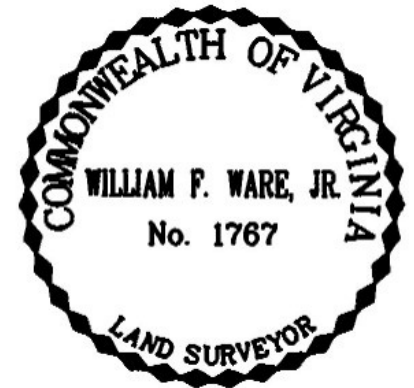
MONUMENT DESCRIPTION :

Station is a 2" Bronze Disk set in place in a 6" concrete monument.

To reach the station from the intersection of West Broad Street and Staples Mill Road (Rte. 33), proceed north 0.3 mile along Staples Mill Road to the station on the right in the grass.

Station is set flush with the ground.

Azimuth Mark Monument #99AR





COUNTY OF HENRICO, VIRGINIA

MONUMENT DESCRIPTION



NAME OF STATION: **99AR** **SET JULY 2004**

VERTICAL CONTROL

NAVD 88 (Feet): ELEV. = 224.3
NAVD 88 (Meters): ELEV. = 68.37

HORIZONTAL CONTROL

Horizontal Control Based On NAD 83 (93):

VA STATE PLANE COORDINATES (SOUTH ZONE):

NORTHING (FEET): 3737444.503 NORTHING (METERS): 1139175.363
EASTING (FEET): 11775026.738 EASTING (METERS): 3589035.328

GEOGRAPHIC COORDINATE SYSTEM:

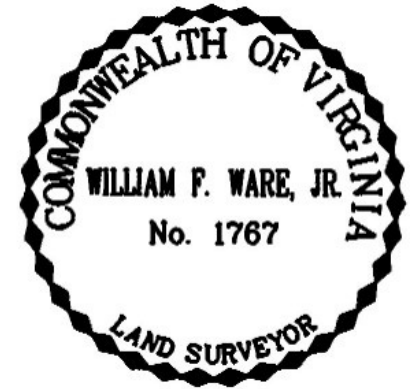
LATITUDE (Y): 37 34 59.35839
LONGITUDE (X): 77 29 30.90075

MONUMENT DESCRIPTION :

Station is a 2" Bronze Disk set in place in a 6" concrete monument.

To reach the station from the intersection of Broad Street and Staples Mill Road, go north on Staples Mill Road 0.15 mile. Station is on right side of road just past the entrance into Anthem.

Monument is flush with ground.



NOT TO SCALE

