



# COUNTY OF HENRICO, VIRGINIA

## MONUMENT DESCRIPTION



NAME OF STATION:

**106**

SET MAY 1998

### VERTICAL CONTROL

NAVD 88 (Feet): ELEV. = 293.9  
 NAVD 88 (Meters): ELEV. = 89.58

### HORIZONTAL CONTROL

Horizontal Control Based On NAD 83 (93):

### VA STATE PLANE COORDINATES (SOUTH ZONE):

NORTHING (FEET): 3761403.605    NORTHING (METERS): 1146478.112  
 EASTING (FEET): 11761756.273    EASTING (METERS): 3584990.482

### GEOGRAPHIC COORDINATE SYSTEM:

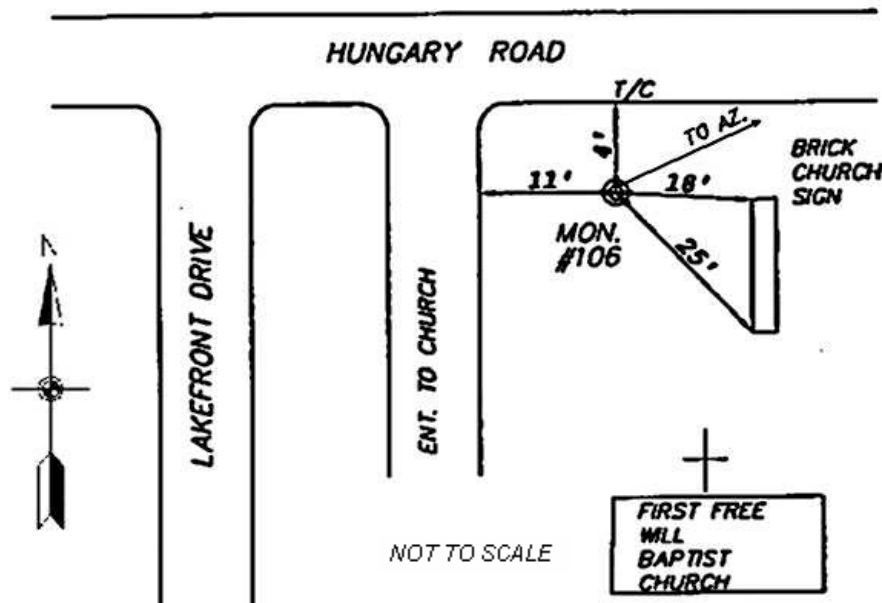
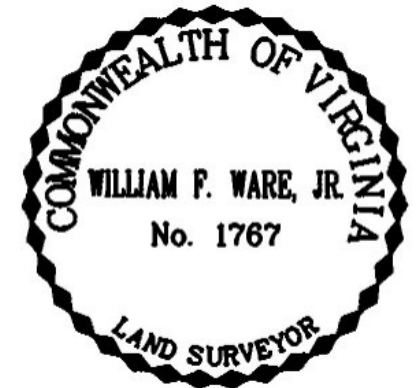
LATITUDE (Y): 37 38 57.59486  
 LONGITUDE (X): 77 32 12.72111

### MONUMENT DESCRIPTION :

Station is a 2" Bronze Disk set in place in a 6" concrete monument.

To reach the station from the intersection of West End Drive and Hungary Road, proceed east 0.2 mile along Hungary Road to the station on the right in the grass. Station is set flush with the ground.

Azimuth Mark Monument #106A





# COUNTY OF HENRICO, VIRGINIA

## MONUMENT DESCRIPTION



NAME OF STATION:

**106A**

SET JUNE 2000

### VERTICAL CONTROL

NAVD 88 (Feet): ELEV. = 292.0  
NAVD 88 (Meters): ELEV. = 89.00

### HORIZONTAL CONTROL

Horizontal Control Based On NAD 83 (93):

### VA STATE PLANE COORDINATES (SOUTH ZONE):

NORTHING (FEET): 3761429.069 NORTHING (METERS): 1146485.873  
EASTING (FEET): 11762591.128 EASTING (METERS): 3585244.947

### GEOGRAPHIC COORDINATE SYSTEM:

LATITUDE (Y): 37 38 57.76227  
LONGITUDE (X): 77 32 2.33744

### MONUMENT DESCRIPTION :

Station is a 2" Bronze Disk set in place in a 6" concrete monument.

To reach the station from the intersection of West End Drive and Hungary Road, proceed east 0.4 mile along Hungary Road to the station on the right in the grass, east corner of Walton Farms Drive. Station is set flush with the ground.

