



# COUNTY OF HENRICO, VIRGINIA

## MONUMENT DESCRIPTION



NAME OF STATION:

**114**

SET MAY 1998

### VERTICAL CONTROL

NAVD 88 (Feet): ELEV. = 227.4  
NAVD 88 (Meters): ELEV. = 69.31

### HORIZONTAL CONTROL

Horizontal Control Based On NAD 83 (93):

### VA STATE PLANE COORDINATES (SOUTH ZONE):

NORTHING (FEET): 3746037.579 NORTHING (METERS): 1141794.538  
EASTING (FEET): 11749511.010 EASTING (METERS): 3581258.119

### GEOGRAPHIC COORDINATE SYSTEM:

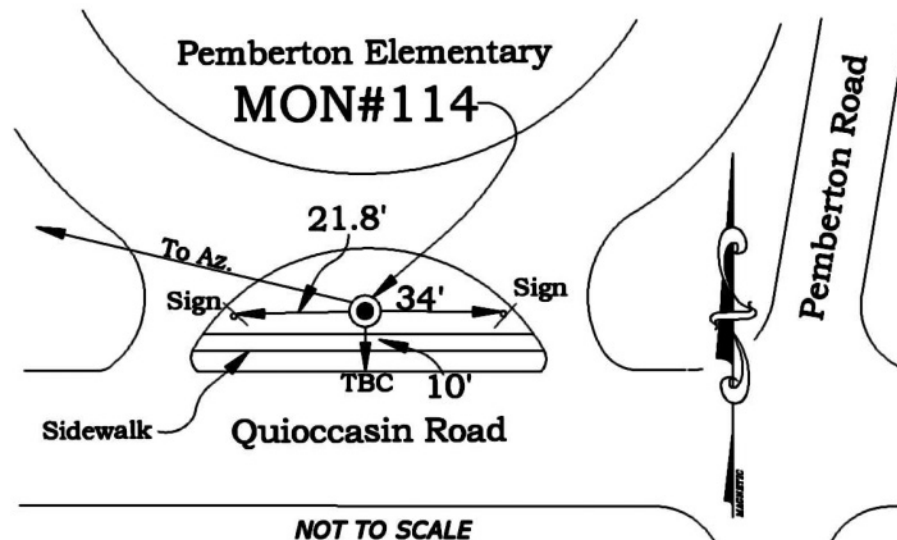
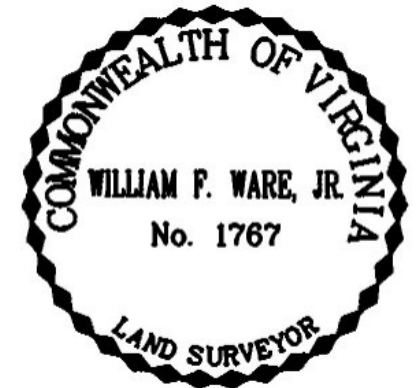
LATITUDE (Y): 37 36 26.88925  
LONGITUDE (X): 77 34 46.83972

### MONUMENT DESCRIPTION :

Station is a 2" Bronze Disk set in place in a 6" concrete monument.

From the intersection of Pemberton Road and Quioccasin Road, go 200 feet west on Quioccasin Road to the station on the right in the grass, west of the entrance to Pemberton Elementary School. Station is set flush with the ground.

Azimuth Mark Monument #114A





# COUNTY OF HENRICO, VIRGINIA

## MONUMENT DESCRIPTION



NAME OF STATION:

**114A**

SET JUNE 2000

### VERTICAL CONTROL

NAVD 88 (Feet): ELEV. = 205.1  
NAVD 88 (Meters): ELEV. = 62.51

### HORIZONTAL CONTROL

Horizontal Control Based On NAD 83 (93):

### VA STATE PLANE COORDINATES (SOUTH ZONE):

NORTHING (FEET): 3746027.597    NORTHING (METERS): 1141791.495  
EASTING (FEET): 11748594.522    EASTING (METERS): 3580978.773

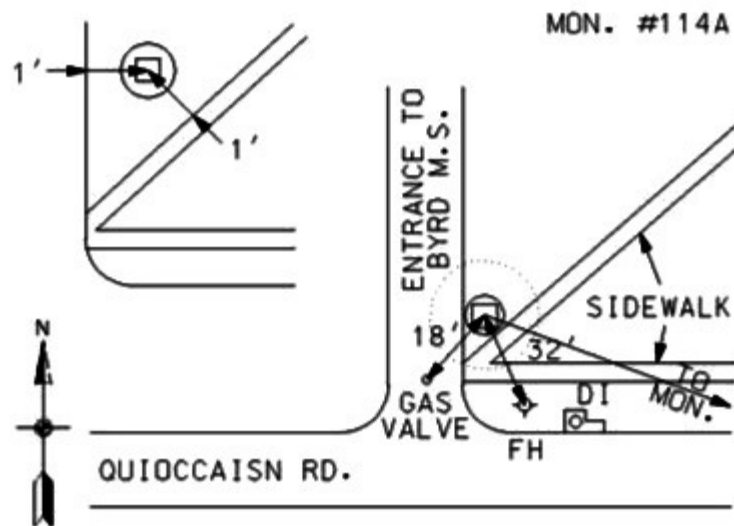
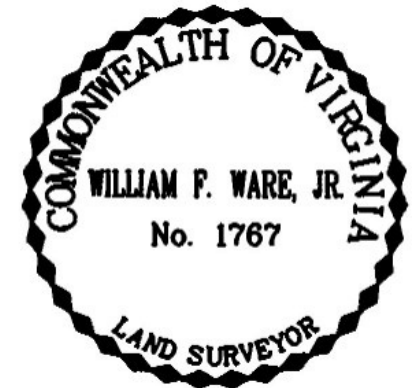
### GEOGRAPHIC COORDINATE SYSTEM:

LATITUDE (Y): 37 36 26.87875  
LONGITUDE (X): 77 34 58.23006

### MONUMENT DESCRIPTION :

Station is a 2" Bronze Disk set in place in a 6" concrete monument.

From the intersection of Pemberton Road and Quioccasin Road, proceed west 0.2 mile along Quioccasin Road to the station on the right in the grass. Station is set flush with the ground.



NOT TO SCALE

