



COUNTY OF HENRICO, VIRGINIA

MONUMENT DESCRIPTION



NAME OF STATION:

126

SET MAY 1998

VERTICAL CONTROL

NAVD 88 (Feet): ELEV. = 281.3

NAVD 88 (Meters): ELEV. = 85.74

HORIZONTAL CONTROL

Horizontal Control Based On NAD 83 (93):

VA STATE PLANE COORDINATES (SOUTH ZONE):

NORTHING (FEET): 3761193.595 NORTHING (METERS): 1146414.101

EASTING (FEET): 11739693.012 EASTING (METERS): 3578265.587

GEOGRAPHIC COORDINATE SYSTEM:

LATITUDE (Y): 37 38 57.65603

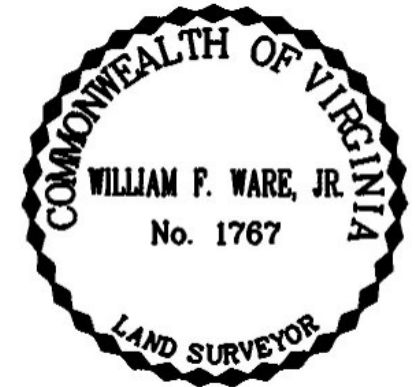
LONGITUDE (X): 77 36 47.07821

MONUMENT DESCRIPTION :

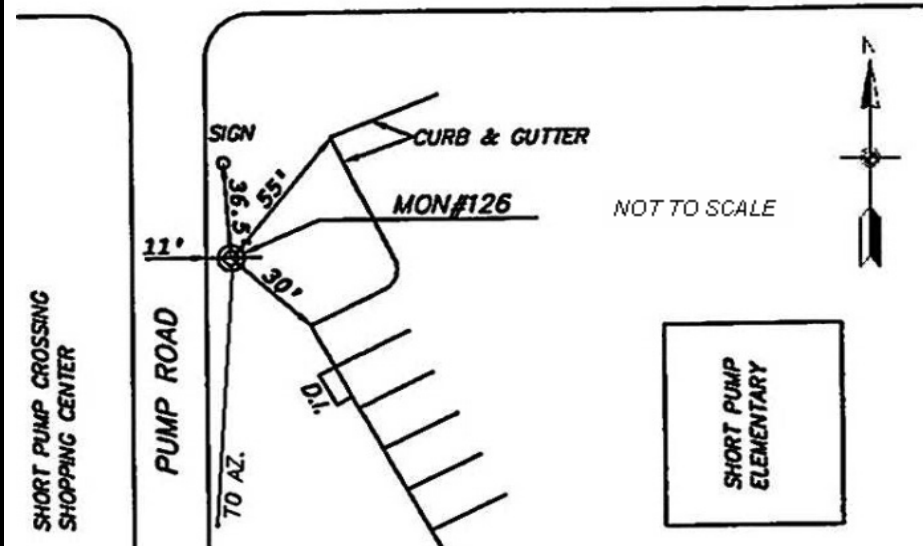
Station is a 2" Bronze Disk set in place in a 6" concrete monument.

To reach the station from the intersection of West Broad Street and Pump Road, proceed south 0.2 mile along Pump Road to Short Pump Elementary School. Station is in front of main school in the grass. Station is set flush with the ground.

Azimuth Mark Monument #126A



WEST BROAD STREET





COUNTY OF HENRICO, VIRGINIA

MONUMENT DESCRIPTION



NAME OF STATION:

126A

SET JUNE 2000

VERTICAL CONTROL

NAVD 88 (Feet): ELEV. = 273.5
NAVD 88 (Meters): ELEV. = 83.36

HORIZONTAL CONTROL

Horizontal Control Based On NAD 83 (93):

VA STATE PLANE COORDINATES (SOUTH ZONE):

NORTHING (FEET): 3760362.609 NORTHING (METERS): 1146160.816
EASTING (FEET): 11739101.397 EASTING (METERS): 3578085.262

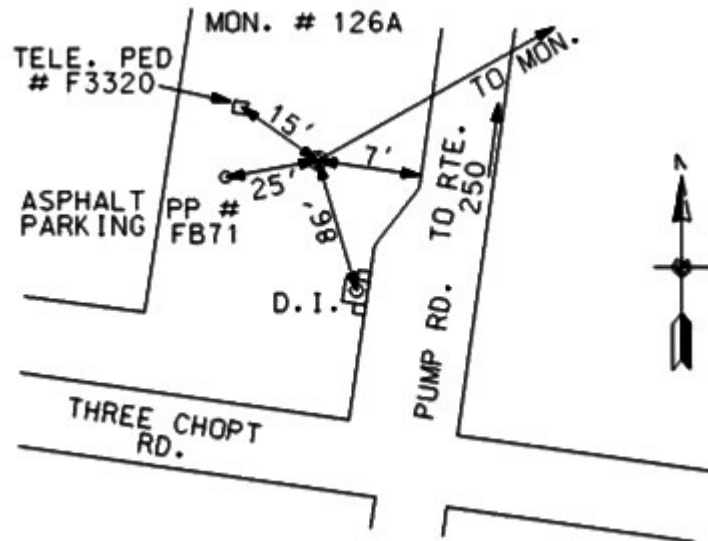
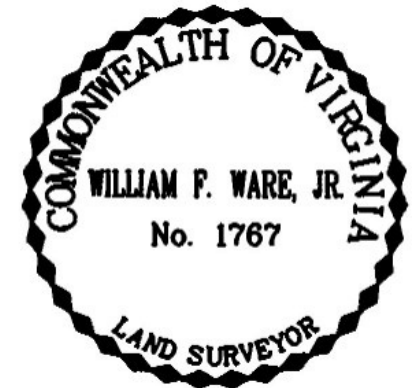
GEOGRAPHIC COORDINATE SYSTEM:

LATITUDE (Y): 37 38 49.49553
LONGITUDE (X): 77 36 54.53114

MONUMENT DESCRIPTION :

Station is a 2" Bronze Disk set in place in a 6" concrete monument.

To reach the station from the intersection of West Broad Street and Pump Road, proceed south 0.35 mile along Pump Road to the station on the right in the grass. Station is set flush with the ground.



NOT TO SCALE

