



COUNTY OF HENRICO, VIRGINIA

MONUMENT DESCRIPTION



NAME OF STATION:

127

SET MAY 1998

VERTICAL CONTROL

NAVD 88 (Feet): ELEV. = 261.2
NAVD 88 (Meters): ELEV. = 79.61

HORIZONTAL CONTROL

Horizontal Control Based On NAD 83 (93):

VA STATE PLANE COORDINATES (SOUTH ZONE):

NORTHING (FEET): 3770833.722 NORTHING (METERS): 1149352.417
EASTING (FEET): 11747765.342 EASTING (METERS): 3580726.038

GEOGRAPHIC COORDINATE SYSTEM:

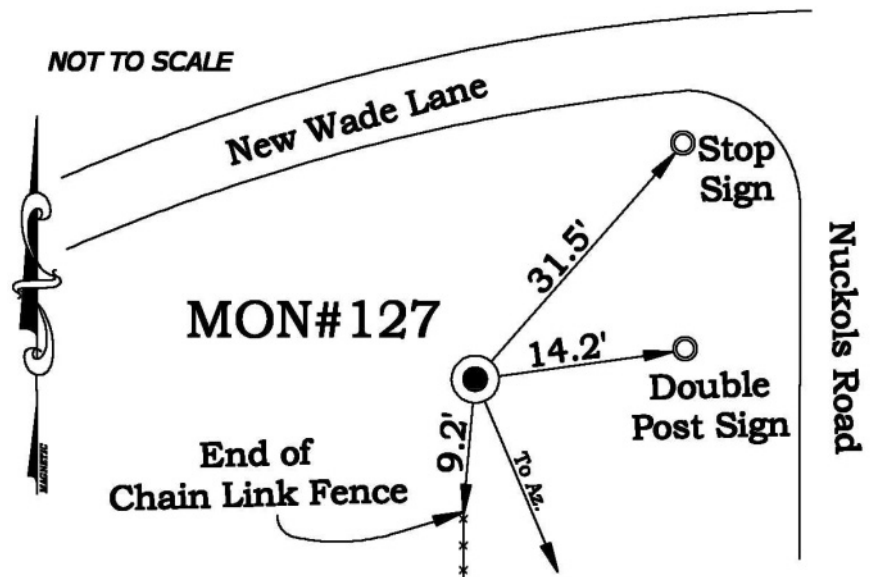
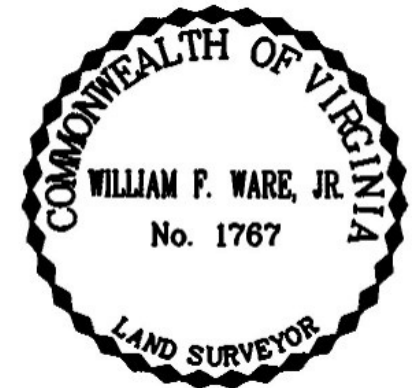
LATITUDE (Y): 37 40 32.19918
LONGITUDE (X): 77 35 5.54589

MONUMENT DESCRIPTION :

Station is a 2" Bronze Disk set in place in a 6" concrete monument.

To reach the station from the intersection of Interstate 295 and Nuckols Road, proceed north 0.3 mile on Nuckols Road to the station on the left in the grass, south of New Wade Lane. Station is set flush with ground.

Azimuth Mark Monument #127A





COUNTY OF HENRICO, VIRGINIA

MONUMENT DESCRIPTION



NAME OF STATION:

127A

SET JUNE 2000

VERTICAL CONTROL

NAVD 88 (Feet): ELEV. = 246.7

NAVD 88 (Meters): ELEV. = 75.19

HORIZONTAL CONTROL

Horizontal Control Based On NAD 83 (93):

VA STATE PLANE COORDINATES (SOUTH ZONE):

NORTHING (FEET): 3769838.765 NORTHING (METERS): 1149049.154

EASTING (FEET): 11748244.342 EASTING (METERS): 3580872.038

GEOGRAPHIC COORDINATE SYSTEM:

LATITUDE (Y): 37 40 22.31686

LONGITUDE (X): 77 34 59.70817

MONUMENT DESCRIPTION :

Station is a 2" Bronze Disk set in place in a 6" concrete monument.

To reach the station from the intersection of Interstate 295 and Nuckols Road, proceed north 0.19 mile along Nuckols Road to the station in the grass median. Station is set flush with ground.

