



COUNTY OF HENRICO, VIRGINIA

MONUMENT DESCRIPTION



NAME OF STATION:

129

SET MAY 1998

VERTICAL CONTROL

NAVD 88 (Feet): ELEV. = 259.8
NAVD 88 (Meters): ELEV. = 79.19

HORIZONTAL CONTROL

Horizontal Control Based On NAD 83 (93):

VA STATE PLANE COORDINATES (SOUTH ZONE):

NORTHING (FEET): 3774539.696 NORTHING (METERS): 1150482.000
EASTING (FEET): 11738793.080 EASTING (METERS): 3577991.287

GEOGRAPHIC COORDINATE SYSTEM:

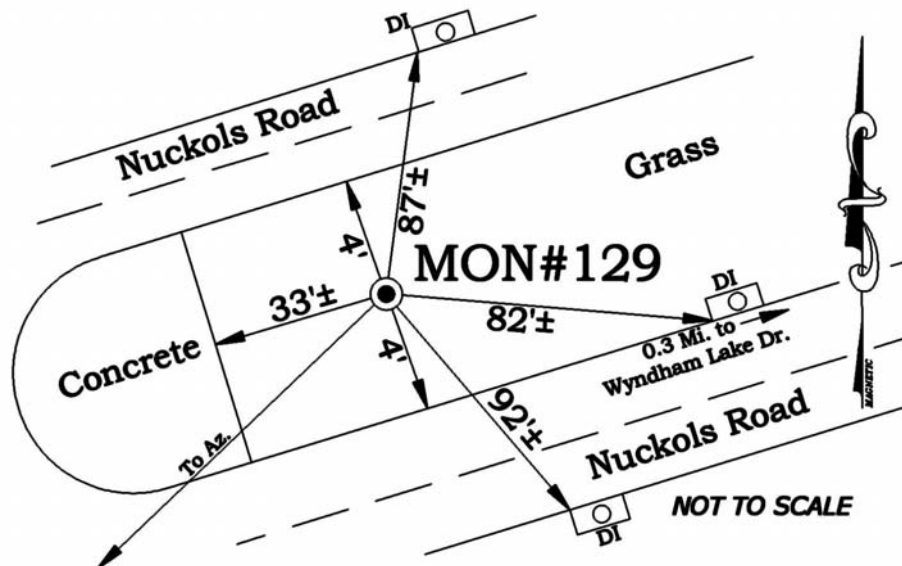
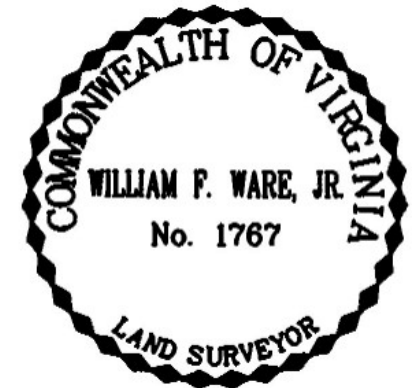
LATITUDE (Y): 37 41 9.68262
LONGITUDE (X): 77 36 56.71349

MONUMENT DESCRIPTION :

Station is a 2" Bronze Disk set in place in a 6" concrete monument.

To reach the station from the intersection of Nuckols Road and Wyndham Lake Drive, proceed west 0.3 mile along Nuckols Road to the station in the grass median. Station is set flush with the ground.

Azimuth Mark Monument #129A





COUNTY OF HENRICO, VIRGINIA

MONUMENT DESCRIPTION



NAME OF STATION:

129A

SET JUNE 2000

VERTICAL CONTROL

NAVD 88 (Feet): ELEV. = 278.0

NAVD 88 (Meters): ELEV. = 84.73

HORIZONTAL CONTROL

Horizontal Control Based On NAD 83 (93):

VA STATE PLANE COORDINATES (SOUTH ZONE):

NORTHING (FEET): 3774059.354 NORTHING (METERS): 1150335.592

EASTING (FEET): 11737310.345 EASTING (METERS): 3577539.349

GEOGRAPHIC COORDINATE SYSTEM:

LATITUDE (Y): 37 41 5.07076

LONGITUDE (X): 77 37 15.21436

MONUMENT DESCRIPTION :

Station is a 2" Bronze Disk set in place in a 6" concrete monument.

To reach the station from the intersection of Nuckols Road and Wyndham Lake Drive, proceed west 0.7 mile along Nuckols Road to the station in the grass median. Station is set flush with the ground and is 3.5' West of a 4" Bradford Pear tree

