



COUNTY OF HENRICO, VIRGINIA

MONUMENT DESCRIPTION



NAME OF STATION:

131

SET MAY 1998

VERTICAL CONTROL

NAVD 88 (Feet): ELEV. = 275.5
NAVD 88 (Meters): ELEV. = 83.97

HORIZONTAL CONTROL

Horizontal Control Based On NAD 83 (93):

VA STATE PLANE COORDINATES (SOUTH ZONE):

NORTHING (FEET): 3755607.910 NORTHING (METERS): 1144711.581
EASTING (FEET): 11739470.256 EASTING (METERS): 3578197.691

GEOGRAPHIC COORDINATE SYSTEM:

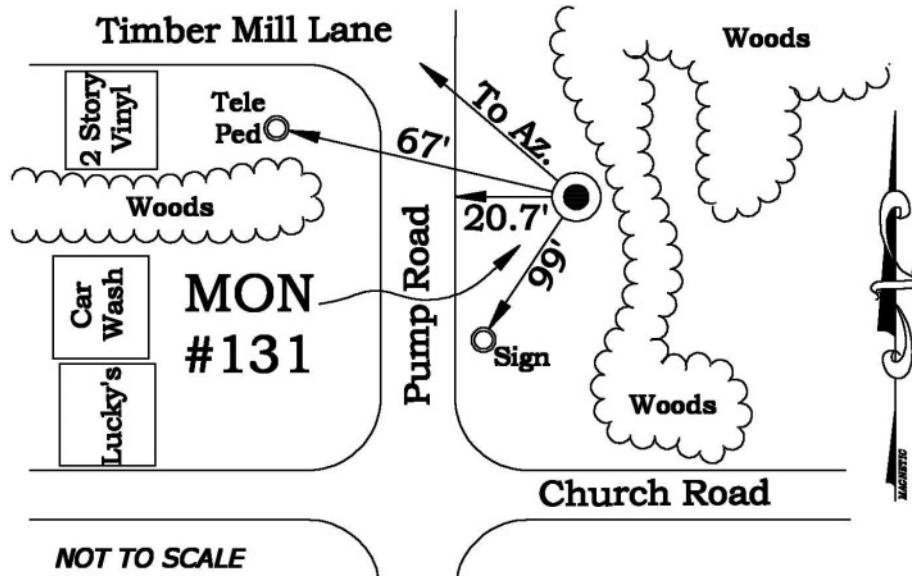
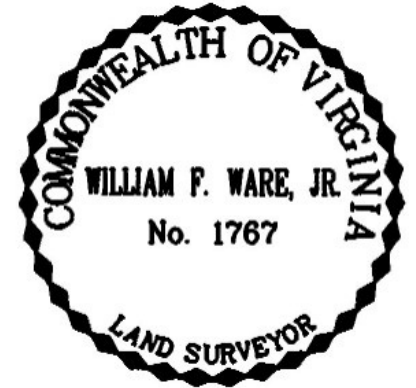
LATITUDE (Y): 37 38 2.45477
LONGITUDE (X): 77 36 50.49976

MONUMENT DESCRIPTION :

Station is a 2" Bronze Disk set in place in a 6" concrete monument.

To reach the station from the intersection of Church Road and Pump Road, proceed north 0.1 mile along Pump Road to the station on the right in the grass. Station is set flush with the ground.

Azimuth Mark Monument #131A





COUNTY OF HENRICO, VIRGINIA

MONUMENT DESCRIPTION



NAME OF STATION:

131A

SET JUNE 2000

VERTICAL CONTROL

NAVD 88 (Feet): ELEV. = 267.5

NAVD 88 (Meters): ELEV. = 81.53

HORIZONTAL CONTROL

Horizontal Control Based On NAD 83 (93):

VA STATE PLANE COORDINATES (SOUTH ZONE):

NORTHING (FEET): 3756367.002 NORTHING (METERS): 1144942.952

EASTING (FEET): 11739080.262 EASTING (METERS): 3578078.820

GEOGRAPHIC COORDINATE SYSTEM:

LATITUDE (Y): 37 38 9.99558

LONGITUDE (X): 77 36 55.25948

MONUMENT DESCRIPTION :

Station is a 2" Bronze Disk set in place in a 6" concrete monument.

To reach the station from the intersection of Church Road and Pump Road, proceed north 0.21 mile along Pump Road to the station on the left in the grass. Station is set flush with the ground.

