



COUNTY OF HENRICO, VIRGINIA

MONUMENT DESCRIPTION



NAME OF STATION: **177** SET MAY 2004

VERTICAL CONTROL

NAVD 88 (Feet): ELEV. = 152.2
NAVD 88 (Meters): ELEV. = 46.39

HORIZONTAL CONTROL

Horizontal Control Based On NAD 83 (93):

VA STATE PLANE COORDINATES (SOUTH ZONE):

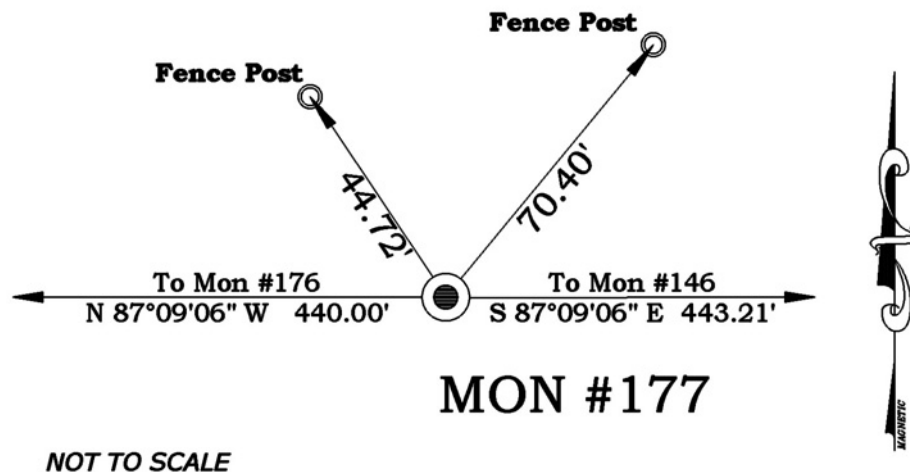
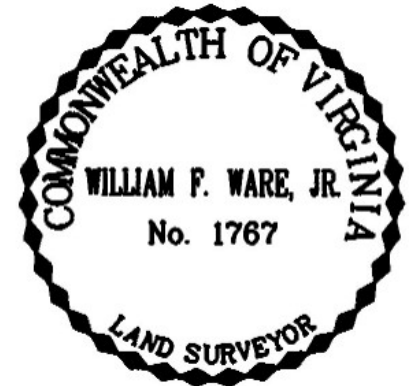
NORTHING (FEET): 3764720.940 NORTHING (METERS): 1147489.238
EASTING (FEET): 11729632.880 EASTING (METERS): 3575199.253

GEOGRAPHIC COORDINATE SYSTEM:

LATITUDE (Y): 37 39 33.44467
LONGITUDE (X): 77 38 51.76943

MONUMENT DESCRIPTION :

1" Rebar with 3.25" Aluminum Disk Set to establish the proposed change in the County Line w/ Henrico and Goochland. See plat prepared by Timmons Group dated 5-7-03, last revised 3-12-04 entitled "Plat Showing the Proposed Relocated County Boundary Line by Voluntary Agreement Between Goochland County and Henrico County". Station was located by traditional survey techniques. Monument is set on the proposed county line.



NOT TO SCALE

