



# COUNTY OF HENRICO, VIRGINIA

## MONUMENT DESCRIPTION



**NAME OF STATION:** WWA30      **SET** OCTOBER 2001

### NO VERTICAL CONTROL DATA

NOTE: Geodetic and metric coordinates were calculated by Corpcon from State Plane coordinates provided by Henrico County Dept. of Public Works. Timmons Group did no field work in establishing these coordinates.

### HORIZONTAL CONTROL

Horizontal Control Based On NAD 83 (93):

### VA STATE PLANE COORDINATES (SOUTH ZONE):

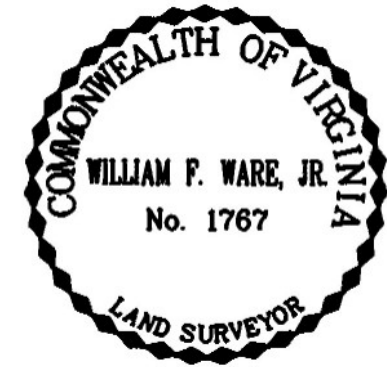
NORTHING (FEET): 3766734.86      NORTHING (METERS): 1148103.082  
 EASTING (FEET): 11730195.72      EASTING (METERS): 3575370.807

### GEOGRAPHIC COORDINATE SYSTEM:

LATITUDE (Y): 37° 39' 53.30462"  
 LONGITUDE (X): 77° 38' 44.54354"

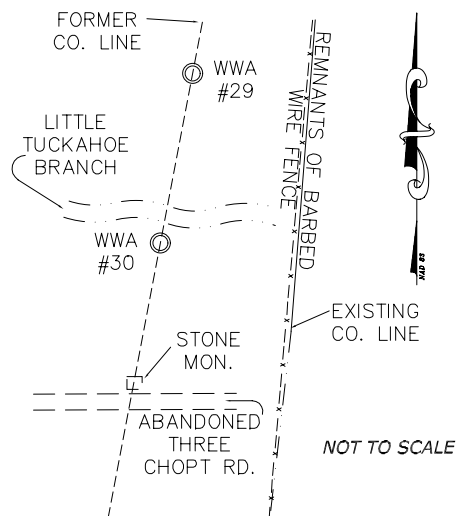
### MONUMENT DESCRIPTION :

Station is a 3 1/4" Aluminum Disk set in place on a 1" rebar 0.2' above ground. Station is set on the former County line approximately 1274' South of I-64.



### VICINITY MAP

WWA NO. 30



### DETAIL MONUMENT

WWA NO. 30

