



Henrico County

# Multi-Family Residential Directory

Multi-Family Residential Developments listed alphabetically by Magisterial District



County of Henrico Planning Department  
September 2024

## METHODOLOGY FOR THE 2024 MULTI-FAMILY REPORT

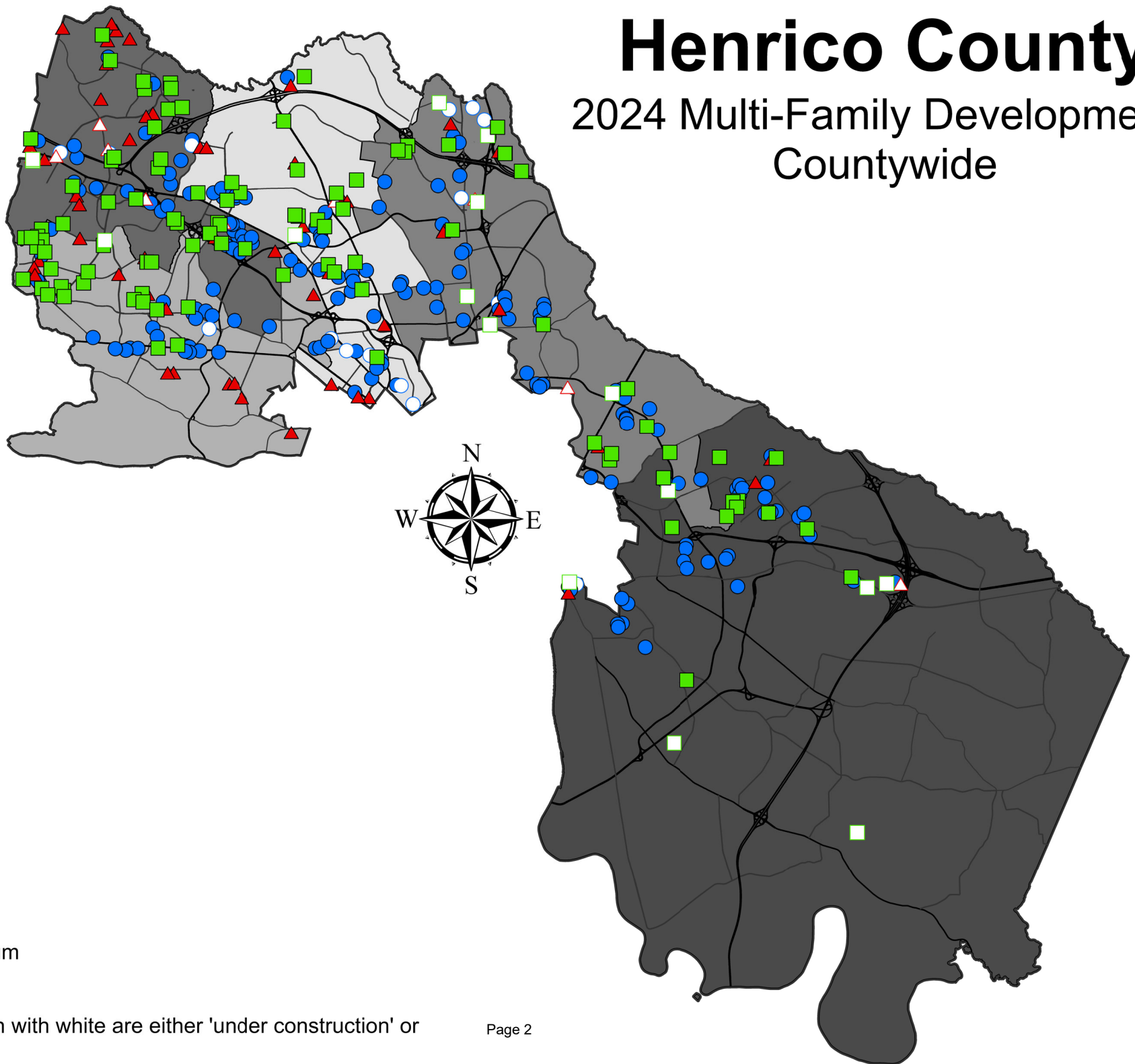
The Multi-Family Report is a summary of all multi-family developments in Henrico County sorted by Magisterial District, type and status. Information is from a variety of sources including the County’s real estate database, approved Plans of Development (POD), and Geographic Information Systems (GIS). A map is available at the beginning of the report to identify the general location of all multi-family developments (including those “Proposed” and “Under Construction”) in Henrico County. Similar maps for each Magisterial District are included at the end of the report.

The report provides a variety of information on each development. Please note there are two different categories for the number of units. The first category, “Built Units,” is based on total Certificates of Occupancy (COs) issued for each development. These units are predominantly categorized as “Existing;” however, some developments may be ongoing and are therefore considered “Under Construction”. For apartment buildings, the year built reflects the year the first CO was issued, since units are constructed as a group and not individually. The second category, “Total Units,” identifies the total number of units once the development has reached build-out. Typically, there will be a difference between “Built Units” and “Total Units” for developments classified as “Proposed” or “Under Construction”. The fields in the report are listed below:

- Multi-Family Development Name
- Type (Apartment, Condominium, or Townhouse)
- GPIN (Geographic Parcel Identification Number)
- POD # – before 1968, PODs were not required.
- Year Built
- Acreage
- Zoning
- Number of Built Units (triggered by Certificates of Occupancy (COs)) – number of units whose construction has been completed and can be inhabited.
- Number of Total Units (*italicized*) – number of units once development will have reached build-out/completion status.
- Associated Conditional Rezoning Cases – for cases with additional proffered conditions.

# Henrico County

## 2024 Multi-Family Developments Countywide



### Type\*

- Apartment
- ▲ Condominium
- Townhouse

\* Points filled in with white are either 'under construction' or 'proposed'

# Multi-Family Report - 2024

<i>Development</i>	<i>GPIN</i>	<i>POD #</i>	<i>Year Built</i>	<i>Acreage</i>	<i>Zoning</i>	<i>Built Units</i>	<i>Total Units</i>	<i>Rezoning Case</i>
<b>Brookland</b>								
<b>Apartment</b>								
<b>Existing</b>								
Abbington West End	768-750-6459	029-71	1973	36.33	R-5	516	516	
Ainsworth	773-759-5623	2021-00049	2024	16.18	R-6C	350	350	REZ2020-00028
Amber Ridge	766-755-4135	124-86	1987	7.86	R-5	115	115	C-89C-85
Breckenridge	753-760-0679	069-85	1987	21.38	R-5C	300	300	C-66C-94
Cardinal Forest	766-751-2348	011-72	1975	16.66	R-5	240	240	
Carriage Club Apartments	770-749-9008		1966	18.08	R-6C	297	297	
Carriage Hill North and South	770-748-2488	058-78	1967	47.03	R-6C	812	814	REZ2016-00040
Champions Club	754-761-0533	045-85	1987	19.42	R-5	212	212	C-4C-84, C-74C-84
Colonial Village at Hampton Glen	754-760-0875	045-85	1985	15.91	R-5	232	232	
Colonial Village at West End	750-760-1466	162-85	1986	15.37	R-5	224	224	C-60C-85
Courthouse Green West	766-754-6198	016-72	1975	12.41	R-5	180	180	
Crestwood at Libbie	770-741-9151		1962	7.05	R-5	98	98	
Crown Square	772-751-0746		1969	4.58	R-6	91	91	
Faison Residences	772-738-8719	2012-00367	2015	2.31	R-6C	45	45	C-13C-09
Fox Rest Apartments	770-750-4811		1969	17.42	R-5	231	231	
Hamptons at Hunton Park	762-775-1005	083-01	2003	32.59	Mixed	300	300	C-47C-01
Hilliard Road	776-749-2071		1949	16.10	R-5	212	212	
Jordan's Branch Apartments	773-739-4846	2020-00524	2023	2.16	UMU	14	14	REZ2015-00018

<i>Development</i>	<i>GPIN</i>	<i>POD #</i>	<i>Year Built</i>	<i>Acreage</i>	<i>Zoning</i>	<i>Built Units</i>	<i>Total Units</i>	<i>Rezoning Case</i>
--------------------	-------------	--------------	-------------------	----------------	---------------	--------------------	--------------------	----------------------

## **Brookland**

### **Apartment**

London Towne	764-755-2413	008-71	1974	49.54	R-5	683	683	
Maple Springs	766-755-3768	078-84	1985	18.53	R-5	268	268	C-40C-84
Millspring Commons	766-758-9453	024-71	1972	16.30	R-5C	159	159	
North Slope	776-750-4209	046-71	1972	3.84	R-5	56	56	
Oakbrook Apartments	754-760-2523	092-87	1988	12.63	R-5	157	157	C-82C-86
Parham Park Place	766-754-1287	086-97	2004	6.93	R-6	136	136	C-80C-87, C-24C-97
Park West End	768-747-5999	133-83	1985	18.08	R-6	312	312	C-28C-83
Penstock Quarter	774-740-0801	2014-00167	2018	3.01	UMUC	327	327	C-005C-07
Place One Apartments	770-750-3086	043-77	1980	8.33	R-5	114	114	
Ridgeview Apartments	770-736-8047		1966	0.41	R-5	6	6	
Springfield Commons	757-760-0523	105-97	1999	9.92	R-5	122	122	
Springfield East	755-760-8548	056-98	1984	17.63	R-5	112	112	
Springfield West	755-760-8218	113-73	1974	14.61	R-5	198	198	
Staples Mill Townhomes	773-745-0783		1966	30.52	R-5	437	437	
Tapestry West	775-737-9442	2019-00465	2022	2.12	M-1	262	262	
Villages at West Laurel	765-756-8270	046-86	1984	42.02	Mixed	503	503	C-60C-84, C-2C-94
Wellsmith Apartments	774-740-0448	2019-00154	2022	2.99	UMUC	349	350	REZ2015-00018
Westbury Apartments	755-760-4488	097-77	1978	11.36	R-5	158	158	
<b>Proposed</b>								
Harp's Landing	773-740-5180	2022-00053		9.89	UMUC		398	REZ2015-00018, REZ2018-00044

<i>Development</i>	<i>GPIN</i>	<i>POD #</i>	<i>Year Built</i>	<i>Acreage</i>	<i>Zoning</i>	<i>Built Units</i>	<i>Total Units</i>	<i>Rezoning Case</i>
<b>Brookland</b>								
<b>Apartment</b>								
Maywill Apartments	776-737-5035	2024-100711		1.89	M-1		268	
Morningside & West Broad Mixed Use	769-741-7358	2021-00193		0.98	B-1C		8	REZ2020-00038
Studios @ 6531	767-743-7902	2022-00029		6.67	R-6C		78	REZ2021-00013
Wrightshaven Square	772-741-6304	2023-00284		10.20	UMU		336	REZ2021-00042
<b>Under Construction</b>								
The Alder on Dabney	778-735-0109	2022-00146		2.39	M-1		242	PUP2022-00002
<b>Total Brookland Apartment Developments = 42</b>				<b>609.63</b>		<b>8,828</b>	<b>10,161</b>	

### Condominium

#### Existing

5100 Monument Avenue	772-735-5697		1961	4.40	R-5	184	184	
Carriage Homes at Crossridge	763-764-6180	012-05	2002	67.00	R-6C	227	227	C-17C-00
Edgewood at Crossridge	762-764-6308	004-06	2011	1.94	R-6C	61	61	C-17C-00, C-51C-05
Four Seasons Condos	751-766-3547	159-85	1987	15.70	R-5C	88	88	C-10C-84
Hamlet	774-744-3490		1962	13.36	R-5	194	194	
Landings of Laurel	769-760-6002	133-88	1991	12.70	R-5C	120	120	C-61C-81, C-84C-88
Laurel Lakes Condos	768-760-9151	133-88	1984	35.54	R-5	264	264	C-61C-81
Monument Square Condos	771-736-2305	020-06	2008	15.01	R-6	238	238	
Shannon Green Condos	764-756-2095	105-86	1983	27.90	R-6	380	380	C-5C-81, C-60C-84
Southhall at Crossridge	763-764-1268	004-06	2008	20.06	R-6C	24	24	C-17C-00, C-51C-05
Townes of Wistar Glen	767-751-4828	2018-00093	2021	15.17	RTHC	136	136	C-10C-05

<i>Development</i>	<i>GPIN</i>	<i>POD #</i>	<i>Year Built</i>	<i>Acreage</i>	<i>Zoning</i>	<i>Built Units</i>	<i>Total Units</i>	<i>Rezoning Case</i>
<b>Brookland</b>								
<b>Condominium</b>								
Villas at Hunton Park	762-774-5118	052-04	2007	37.85	RTHC	225	225	C-67C-04
Villas at Innsbrook	752-766-1246	059-03	2005	7.70	R-5C	56	56	C-14C-03
Westhampton Place	767-737-9055	127-83	1984	3.59	R-5	51	51	
<b>Proposed</b>								
Pointe at Laurel Lakes	768-760-1507	2022-00380		5.68	R-6C		59	REZ2021-00041
<b>Under Construction</b>								
Libbie Mill Midtown Condos	773-740-5180	2023-00284		5.25	UMUC	93	130	REZ2015-00018, REZ2018-00044
<b>Total Brookland Condominium Developments = 16</b>				<b>288.85</b>		<b>2,341</b>	<b>2,437</b>	

### **Townhouse**

#### **Existing**

Glenside Woods	771-749-5510	066-05	2009	10.92	RTHC	100	100	C-53C-00
Hermitage Townes	770-752-6945	2014-00401	2016	12.00	RTHC	54	54	
Hermitage Trace	766-756-8678	093-86	1988	2.16	RTHC	18	18	C-6C-86
Lakeland Townes	769-758-1296	097-97	1997	32.32	RTHC	190	190	C-18C-95
Laurel Lakes Townhouses	768-760-2990	007-91	1984	44.72	RTHC	376	376	C-61C-81, C-2C-89
Laurel Square	770-762-7554		1971	10.37	RTH	93	93	
Lexington Village	751-760-1377	093-85	1984	13.85	RTHC	94	94	C-37C-81
Libbie Mill Midtown Townhomes	773-740-5180	2022-00006	2024	5.25	UMUC	179	179	REZ2015-00018, REZ2018-00044
Linden Pointe	761-769-6968	014-05	2007	10.36	R-5AC	6	6	C-24C-04

<i>Development</i>	<i>GPIN</i>	<i>POD #</i>	<i>Year Built</i>	<i>Acreage</i>	<i>Zoning</i>	<i>Built Units</i>	<i>Total Units</i>	<i>Rezoning Case</i>
--------------------	-------------	--------------	-------------------	----------------	---------------	--------------------	--------------------	----------------------

## **Brookland**

### **Townhouse**

Millspring Townes	765-757-9860	067-02	2003	23.48	RTHC	150	150	C-30C-01
Pheasant Run	756-760-3984	066-78	1978	15.00	RTH	111	111	
Shannon Green Townhouses	763-758-6004	024-90	1983	37.39	RTH	298	298	C-5C-81, C-60C-84
Springfield Woods	754-759-7389	027-81	1980	21.49	RTH	165	165	
Summerhill of Shannon Green	763-758-2015	007-89	1985	13.18	R-5C	126	126	C-5C-81, C-60C-84
Townes at Crossridge	763-763-4371	108-00	2002	33.88	R-6C	177	177	C-17C-00
Townes at Hunton Park	764-775-1817	050-02	2002	60.37	RTHC	257	257	C-48C-01
Townes at Meredith Creek	755-762-2908	023-04	2003	29.77	RTHC	116	116	C-80C-00
Townes of Wistar Woods	768-751-1322	2014-00461	2022	24.22	RTHC	131	131	REZ2014-00006
Village at Willow Run	767-752-3610	078-04	2008	17.30	RTHC	87	87	C-19C-04

### **Under Construction**

West Chase Townhomes	763-755-2471	2016-00083		31.60	RTHC	155	187	REZ2015-00004
----------------------	--------------	------------	--	-------	------	-----	-----	---------------

**Total Brookland Townhouse Developments = 20**

**449.63**

**2,883**

**2,915**

### **Brookland Summary**

**Total Brookland Multi-Family Developments = 78**

**1,348.11**

**14,052**

**15,513**



<i>Development</i>	<i>GPIN</i>	<i>POD #</i>	<i>Year Built</i>	<i>Acreage</i>	<i>Zoning</i>	<i>Built Units</i>	<i>Total Units</i>	<i>Rezoning Case</i>
--------------------	-------------	--------------	-------------------	----------------	---------------	--------------------	--------------------	----------------------

## Fairfield

### Apartment

#### Existing

3527 Bolling Road	804-733-3365		1966	0.34	R-5	5	5	
Ashley Terrace Apartments	788-746-4881		1965	11.23	R-5	110	110	
Atlantic at Brook Run	784-748-2576	020-05	2009	8.63	R-5C	120	120	C-33C-04
Bolling Road Manor	804-733-3550	005-72	1973	0.96	R-5	13	13	
Brook Villas	783-753-8074	2019-00390	2023	6.04	R-5	84	84	
Cadence at the Glen	783-772-1148	026-07	2009	9.16	Mixed	118	118	C-55C-06, C-45-07
Colonial Apartments	793-745-5958		1972	21.11	R-5	308	308	
Creekside Manor	783-751-5437		1964	7.00	R-6	97	97	
Delmont Plaza	793-737-2374	099-77	1981	2.52	R-6	41	41	
Delmont Village	793-737-2945	077-04	2007	3.67	R-5	52	52	
Fieldcrest Apartments	793-737-6038	083-04	2007	2.29	R-5	29	29	
Glenwood Farms	803-734-9319		1948	28.79	R-5	294	294	
Greens at Virginia Center	783-767-3228	021-96	1998	13.41	R-6	180	180	C-10C-96, C-46C-95
Heritage Village	793-746-5833		1970	20.94	R-5	304	304	
Hermitage Manor	779-749-1536	034-94	1964	11.96	R-5	170	170	
Hermitage Square	780-747-8103	074-79	1982	2.03	R-5	26	26	
Hilliard Court	780-749-7546		1966	1.89	R-5	21	21	
Hollybrook Apartments	784-754-2107	026-90	1984	6.55	R-5	60	60	
Hope Village	780-761-7996	009-70	1973	6.79	R-5	100	100	
Horizon at Springdale Park	803-737-0004	2021-00149	2024	18.15	UMUC	305	305	REZ2020-00046

<i>Development</i>	<i>GPIN</i>	<i>POD #</i>	<i>Year Built</i>	<i>Acreage</i>	<i>Zoning</i>	<i>Built Units</i>	<i>Total Units</i>	<i>Rezoning Case</i>
--------------------	-------------	--------------	-------------------	----------------	---------------	--------------------	--------------------	----------------------

## **Fairfield**

### **Apartment**

Kings Point	808-732-2121	128-88	1988	22.74	R-5	330	330	C-53C-88
Legends at Virginia Center	782-768-6104	085-96	1998	24.75	R-5	352	352	C-56C-93, C-1C-98, C-58C-98
Linden at Parkside	789-745-6968		1966	11.58	R-5	156	156	
Mallard Greens	802-725-5570		1967	6.29	R-5	92	92	
Meadows Apartments	783-763-4721	038-90	1991	7.66	R-6	151	151	C-59C-88
Old Bridge Apartments	776-748-8779		1969	14.70	R-5	222	222	
Overlook at Brook Run	784-745-0846	018-00	2001	53.36	R-6	282	282	
Pointe at River City	810-725-8965	008-69	1974	84.22	R-5	1,184	1,184	
Richfield Place	789-748-1537	007-76	1977	21.83	Mixed	266	266	
River Vista Apartments	781-757-3622	067-80	1982	17.13	R-5	232	232	
Saddlewood Apartments	804-736-0615	141-86	1987	8.54	R-5	85	85	C-73C-83
Saddlewood Townhomes	807-734-1885	091-73	1979	5.28	R-5	76	76	
St. Luke Apartments	791-739-9905	016-80	1982	46.82	R-5	496	496	
Stoneyridge	804-732-4197	129-74	1950	10.13	R-5	100	100	
The Compass at Springdale Park	803-737-5815	2021-00149	2024	2.88	UMUC	152	152	REZ2020-00046
Townsend Square Apartments	800-726-0425		1968	4.45	R-6	89	89	
Treehouse Apartments	793-747-9953	034-75	1974	12.67	R-5	248	248	
Village at the Arbors	789-747-2539		1965	22.78	R-5	292	292	
Winston Manor	793-737-9767	006-70	1971	7.65	R-6	145	145	
Wood Creek	793-747-9953	019-83	1974	18.90	R-5	218	218	

<i>Development</i>	<i>GPIN</i>	<i>POD #</i>	<i>Year Built</i>	<i>Acreage</i>	<i>Zoning</i>	<i>Built Units</i>	<i>Total Units</i>	<i>Rezoning Case</i>
<b>Fairfield</b>								
<b>Apartment</b>								
Woodman West	774-762-2237	054-78	1982	16.64	R-5	197	197	
<b>Proposed</b>								
Belmont at River Mill	782-771-0431	2017-00435		21.38	R-5C		283	REZ2019-00019
Helios	788-747-4162	2023-00206		8.20	R-6C		186	REZ2023-00003
Telegraph Road Apartments	786-770-4008	2023-00353		7.20	B-3C, O-3C		279	C-113C-88, C-114C-88, C-116C-88
<b>Under Construction</b>								
The Brook	783-760-6649	2022-00424		13.48	R-6C		310	REZ2022-00011
The Walker at Virginia Center	784-771-9755	2021-00414		46.93	R-6C		275	REZ2021-00021, C-113C-88
<b>Total Fairfield Apartment Developments = 46</b>				<b>701.64</b>		<b>7,802</b>	<b>9,135</b>	

### Condominium

#### Existing

Ashley Terrace Condos	788-746-5297		1963	0.57	R-5	66	66	
Crosspoint - The Links	788-766-2031	110-96	1998	15.20	R-6C	288	288	C-21C-96
Lakeside Landing Condos	784-748-4957	2018-00051	2019	10.26	R-6C	84	84	REZ2017-00026
Stonewall Manor	781-756-5960	093-73	1976	54.02	R-5	407	407	
Townes at Stonewall Manor	781-756-5140	014-08	2018	3.94	R-5C	46	46	C-30C-07
Villas at Virginia Center	782-769-2567	064-96	1997	12.12	RTHC	64	64	C-115C-88

#### Proposed

Village at VCC Condos	785-771-0111	2022-00567		22.40	R-6C		212	REZ2022-00009
-----------------------	--------------	------------	--	-------	------	--	-----	---------------



<i>Development</i>	<i>GPIN</i>	<i>POD #</i>	<i>Year Built</i>	<i>Acreage</i>	<i>Zoning</i>	<i>Built Units</i>	<i>Total Units</i>	<i>Rezoning Case</i>
--------------------	-------------	--------------	-------------------	----------------	---------------	--------------------	--------------------	----------------------

## **Fairfield**

### **Townhouse**

Townes at Woodman	775-766-8124	2012-00426	2015	27.74	RTHC	82	82	C-8C-12
Villages at the Crossings	788-769-0421	059-04	2006	77.09	RTHC	177	177	C-3C-04

### **Proposed**

Edgebrook	786-768-8517	2024-100293		15.36	CMUC		112	REZ2022-00036
The Crossings at Mulberry	787-744-3995	2023-00352		17.06	R-6C		86	REZ2022-00013

### **Under Construction**

Glens at Scott Place	785-757-8343	2017-00136		9.51	RTHC	80	115	REZ2016-00024
Lakeside Landing Townhomes	784-748-5541	2020-00319		10.64	R-6C	88	94	REZ2019-00036
Reserve at Springdale Park	802-736-5568	2021-00230		4.69	UMUC	30	108	REZ2021-00046
ReTreat at One Townhomes	785-759-6999	2021-00011		16.67	R-6C	182	366	REZ2021-00060, REZ2020-00016
River Mill Townhomes	780-772-8313	2017-00065		65.12	Mixed	246	311	REZ2016-00002
Village at VCC Townhomes	784-771-0908	2021-00121		4.63	R-6C	27	225	REZ2022-00009

**Total Fairfield Townhouse Developments = 24**

**383.70**

**1,919**

**2,683**

### **Fairfield Summary**

**Total Fairfield Multi-Family  
Developments = 79**

**1,220.28**

**10,803**

**13,273**

<i>Development</i>	<i>GPIN</i>	<i>POD #</i>	<i>Year Built</i>	<i>Acreage</i>	<i>Zoning</i>	<i>Built Units</i>	<i>Total Units</i>	<i>Rezoning Case</i>
--------------------	-------------	--------------	-------------------	----------------	---------------	--------------------	--------------------	----------------------

## Three Chopt

### Apartment

#### Existing

3500 West View	747-759-4312	2021-00197	2023	5.43	UMUC	282	282	REZ2018-00006
Addison at Wyndham	745-774-5311	098-95	1997	21.70	R-6C	312	312	C-30C-89, C-83C-94, C-40C-95
Atlantic at Twin Hickory	746-770-1398	017-04	2007	5.55	R-6C	110	110	C-13C-02
Avia Apartment Homes	731-766-4295	2013-00421	2017	20.53	Mixed	320	320	C-18C-12
Broadmoor	755-756-4194	089-84	1985	18.31	R-6	360	360	C-23C-84
Brookdale	757-755-8737	104-87	1988	7.76	R-5	105	105	C-023-74, C-014C-83
Carriage Homes at Wyndham	739-777-9232	074-95	1998	17.13	R-6	264	264	C-43C-97, C-29C-89, C-12C-91
Chelsea Square	755-753-5196	119-74	1975	31.15	R-5	400	400	
Copper Mill Apartments	756-756-1972	047-85	1986	13.34	R-5C	192	192	C-22C-84
Copper Spring Apartments	755-756-5917	121-87	1989	29.78	Mixed	366	366	C-43C-84
Crossings at Short Pump	746-758-6648	010-96	1997	29.21	R-6	424	424	C-86C-94, C-70C-95
Culpepper Farms	755-757-0805	131-87	1988	14.29	R-5	228	228	C-54C-84
Everleigh Apartment	735-761-8792	2018-00243	2021	8.49	R-6C	165	165	
Flats at West Broad Village	742-760-4589	042-06	2008	115.04	UMUC	339	339	C-12C-06
Gardens at Twin Hickory	744-768-6103	029-00	2001	56.37	Mixed	378	378	C-48C-98
Harbor Village	756-754-8979	075-83	1980	23.11	R-5	324	324	
Hickory Creek	756-755-6553	009-84	1985	20.41	R-5	294	294	
Innsbrook Square	749-764-0072	2021-00116	2023	12.58	UMUC	305	305	REZ2020-00044
Innslake Apartments	747-761-7780	2017-00308	2021	4.08	UMUC	221	221	REZ2017-00006

<i>Development</i>	<i>GPIN</i>	<i>POD #</i>	<i>Year Built</i>	<i>Acreage</i>	<i>Zoning</i>	<i>Built Units</i>	<i>Total Units</i>	<i>Rezoning Case</i>
<b>Three Chopt</b>								
<b>Apartment</b>								
Legacy at Mayland	756-753-4645	085-74	1969	38.94	R-5	576	576	
Marshall Springs at Gayton West	735-766-8340	2012-00152	2015	30.01	Mixed	420	420	C-9C-11
Metropolis at Innsbrook	747-763-5508	2020-00117	2023	14.37	UMUC	436	436	REZ2020-00020
Quarter Mill	754-754-6537	037-89	1990	18.94	R-5	266	266	C-32C-88
Reflections of West Creek	736-764-1996	044-06	2006	24.80	Mixed	422	422	C-27C-98, C-62C-98
Sundance Station	756-755-0755	023-83	1984	26.11	R-5C	300	300	C-15C-82
The Madison Apartments	738-761-6025	040-96	2001	37.36	R-5C	506	506	C-109C-86, C-67C-94
Three Chopt	753-748-1493		1964	6.91	R-5	91	91	
Three Chopt West	755-745-8212	014-70	1961	23.30	R-5	290	290	
Trails at Short Pump	745-759-3247	053-87	1989	32.24	R-5	350	350	C-28C-86
Triton Glen	750-767-3526	2020-00152	2024	3.30	UMUC	252	252	
Tuckernuck Trail	757-754-9669	031-94	1989	12.71	Mixed	153	153	C-92C-84
Wellesley Terrace	736-760-4795	071-88	1989	24.75	R-5C	340	340	
<b>Proposed</b>								
Innsbrook Central Business District	750-766-3162	2013-00189		39.46	UMUC		156	C-27C-04
One Pouncey	740-765-2150	2021-00318		9.75	R-6C		238	REZ2020-00018, PUP2020-00008
Three Notch'd Flats	734-765-1456	2022-00007		17.27	R-6C		325	REZ2021-00002
<b>Total Three Chopt Apartment Developments = 35</b>				<b>814.48</b>		<b>9,791</b>	<b>10,510</b>	

<i>Development</i>	<i>GPIN</i>	<i>POD #</i>	<i>Year Built</i>	<i>Acreage</i>	<i>Zoning</i>	<i>Built Units</i>	<i>Total Units</i>	<i>Rezoning Case</i>
--------------------	-------------	--------------	-------------------	----------------	---------------	--------------------	--------------------	----------------------

## Three Chopt

### Condominium

#### Existing

English Oaks at Wellesley	736-759-5329	156-88	1990	5.70	RTHC	25	25	C-109C-86
GreenGate Condos	732-764-1882	2020-00218	2023	2.13	UMUC	49	49	REZ2014-00009
Holly Glen	742-767-6636	022-01	2002	13.80	RTHC	68	68	C-48C-98
Pemberton Oaks Condos	753-755-3142	092-88	1989	16.41	R-5C	84	84	C-32C-88
Saunders Station at Broad Hill Centre	730-766-3642	2014-00181	2020	18.00	R-3C	166	166	C-018C-12
Turtle Creek West	744-752-6586	101-83	1984	15.24	R-5	216	216	
Westshire on Parham	760-753-8081		1964	4.30	R-5	48	48	

#### Proposed

Gayton Village	733-765-5923	2023-00349		4.33	R-6C		100	REZ2023-00022
The Flats at Mayland	754-757-3226	2023-00491		9.29	R-6C		268	REZ2023-00013

#### Under Construction

Gateway Square Condos	730-765-6315	2020-00259		22.97	R-6C	104	164	REZ2017-00034
Pointe at Twin Hickory	740-766-0011	2021-00194		8.67	Mixed	40	170	
West Broad Village Condos	744-760-7007	2018-00529		11.88	UMUC	31	61	REZ2018-00037

**Total Three Chopt Condominium Developments = 12**

**132.72**

**831**

**1,419**

### Townhouse

#### Existing

Avington	740-764-4360	016-06	2008	11.75	RTHC	52	52	C-66C-06
Bartley Pond	753-756-9088	017-02	2004	4.38	RTHC	33	33	C-49C-01



<i>Development</i>	<i>GPIN</i>	<i>POD #</i>	<i>Year Built</i>	<i>Acreage</i>	<i>Zoning</i>	<i>Built Units</i>	<i>Total Units</i>	<i>Rezoning Case</i>
--------------------	-------------	--------------	-------------------	----------------	---------------	--------------------	--------------------	----------------------

## Three Chopt

### Townhouse

Bedford Falls at Hickory Grove	747-770-3699	2014-00180	2016	10.62	RTHC	79	79	REZ2014-00010, REZ2015-00026
Courtland at Wyndham	740-776-1890	117-98	2000	13.57	RTHC	75	75	C-29C-96, C-29C-89
Duncan Park at Sadler Walk	746-763-2177	2012-00193	2014	10.79	RTHC	64	64	C-19C-06
Foxfield at Wellesley	735-761-6643	038-88	1989	9.66	R-5C	73	73	C-109C-86
Greenaire Wood	748-757-1952	080-81	1984	5.56	RTH	48	48	
Hickory Place	747-773-6955	2013-00110	2015	5.20	RTHC	30	30	C-50C-04, REZ2013- 00008
Holloway Townes at Wyndham Forest	749-771-0923	2015-00476	2018	7.53	RTHC	105	105	REZ2015-00014
Jamerson Park	745-768-7376	037-03	2004	29.68	RTHC	124	124	C-13C-02
Mayland Townes	757-753-0796	046-03	2007	7.60	RTHC	42	42	C-62C-02
Morgan's Glen at Wyndham	739-780-1702	023-94	1995	9.84	R-5	56	56	
Pemberton Green	753-757-6214	142-85	1984	5.80	RTHC	41	41	C-20C-83
Pemberton Oaks Townhouses	754-754-1059	060-94	1994	33.08	R-5C	234	234	C-32C-88, C-15C-92
Preston Square	747-774-6121	046-05	2008	5.00	RTHC	28	28	C-50C-04
Sadler Crossing	746-764-5185	2015-00066	2016	12.99	RTHC	70	70	C-008C-05, REZ2015-00003
Saunders Station Townes at Broad Hill Centre	730-767-4819	2014-00227	2019	10.55	R-6C	78	78	C-18C-12
Three Chopt Village	748-757-6003	078-02	2005	32.60	R-6C	75	75	C-49C-00
Three Notch Place	740-759-1053	027-04	2006	14.83	RTHC	74	74	C-58C-03
Townes at Deep Run	745-752-4921	035-05	2007	1.41	R-5	7	7	
Townes at Hickory Grove	744-773-4443	072-02	2004	11.30	RTHC	101	101	C-20C-02



<i>Development</i>	<i>GPIN</i>	<i>POD #</i>	<i>Year Built</i>	<i>Acreage</i>	<i>Zoning</i>	<i>Built Units</i>	<i>Total Units</i>	<i>Rezoning Case</i>
--------------------	-------------	--------------	-------------------	----------------	---------------	--------------------	--------------------	----------------------

## **Tuckahoe**

### **Apartment**

#### *Existing*

Addison at Kings Crossing	742-741-4436	069-00	2002	13.42	R-5	198	198	REZ2014-00038, C-047-74
Berkeley Apartments	750-741-2483		1962	2.30	R-5	32	32	
Brandywine & Foxchase	731-749-7446	008-74	1974	18.81	Mixed	315	315	
Brighton at Kings Crossing	742-741-9662	105-87	1989	5.41	R-5	68	68	
Cabin Creek	746-743-2908	027-77	1972	21.12	R-5	244	244	
Cambridge Apartments	749-741-5398		1969	5.08	R-5	73	73	
Camelot Townhomes	751-745-0135		1969	7.85	R-5	112	112	
Canterbury Square	741-741-1453	035-71	1970	15.15	R-5	219	219	
Cloisters Apartments	752-746-2526	012-70	1973	21.19	R-5	302	302	
Colonial Village at Chase Gayton	747-747-0033	050-83	1984	32.62	R-5	328	328	
Crofton at Kings Crossing	743-741-9260	069-00	1971	58.53	R-5	432	432	
Estates at Horsepen	765-741-8883	032-00	2004	20.51	R-5	257	257	C-7C-99
Gateway Apartments	753-745-0470	045-71	1973	10.11	R-6	202	262	
Gayton Manor	749-741-9195		1963	3.85	R-6	68	68	C-34C-80
Gayton Pointe	745-744-7414	007-71	1973	17.06	R-5	253	253	
Hunters Ridge	731-749-4581	015-77	1974	23.62	R-5	328	328	
Kings Grant	732-750-7346	031-95	1996	6.41	R-5	90	90	
Landmark at Patterson	749-741-7729		1967	9.67	R-5	132	132	
Landmark at Tuckahoe	738-742-3888		1969	5.29	R-5	336	336	



<i>Development</i>	<i>GPIN</i>	<i>POD #</i>	<i>Year Built</i>	<i>Acreage</i>	<i>Zoning</i>	<i>Built Units</i>	<i>Total Units</i>	<i>Rezoning Case</i>
--------------------	-------------	--------------	-------------------	----------------	---------------	--------------------	--------------------	----------------------

## **Tuckahoe**

### **Condominium**

Deerwood	748-738-3376		1964	5.20	R-5	98	98	
Greystone	755-737-8854	025-93	1986	11.55	R-5C	64	64	C-40C-82, C-12C-94, C-76C-80, C-16C-85
Palmer Place	731-751-0255	015-84	1987	3.81	R-6	60	60	
Raintree Commons	745-748-0637	149-88	1990	8.67	RTHC	30	30	
Regency Woods	747-746-3559	124-73	1976	51.40	R-5	336	336	
St. Albans	755-737-2448	085-86	1985	9.39	R-5	51	51	C-16C-85
Trellis Crossing	741-750-5180	021-02	2004	11.20	RTHC	46	46	C-26C-01
Villas of Autumn Run	731-750-1265	069-01	2004	19.91	R-5	102	102	
West Broad Landing	765-748-5855	2018-00245	2021	11.02	R-6C	200	200	REZ2018-00012
Westham Green	756-735-8377	101-79	1972	16.23	R-5	107	107	
Westleyen	731-752-6038	020-84	1985	15.54	R-5	128	128	
Willow Glen	743-747-7265	065-97	2000	12.79	RTH	40	40	
<b>Total Tuckahoe Condominium Developments = 13</b>				<b>186.83</b>		<b>1,321</b>	<b>1,321</b>	

### **Townhouse**

#### **Existing**

Bay Cove	731-756-9011	113-87	1987	25.27	RTH	154	154	
Berkeley Pointe	731-755-4323	027-83	1984	11.57	RTH	76	76	
Cedar Hill North & South	731-753-3592	081-79	1981	13.78	RTH	92	92	
Foxfire	744-747-5030	054-79	1978	11.45	RTH	74	74	

<i>Development</i>	<i>GPIN</i>	<i>POD #</i>	<i>Year Built</i>	<i>Acreage</i>	<i>Zoning</i>	<i>Built Units</i>	<i>Total Units</i>	<i>Rezoning Case</i>
--------------------	-------------	--------------	-------------------	----------------	---------------	--------------------	--------------------	----------------------

## **Tuckahoe**

### **Townhouse**

Gayton Forest	743-747-3758	116-89	1985	30.32	RTH	101	101	
Grayson Hill	746-741-4166	2013-00096	2006	14.80	RTHC	236	236	C-35C-04
Harbour Cove	731-754-9975	011-82	1983	10.70	RTH	75	75	
Heritage Hill of Raintree	746-746-2236	095-80	1978	25.83	RTH	232	232	
Ivystone Village at Raintree	744-748-3833	025-77	1974	15.70	RTH	80	80	
Knollingwood	734-749-4009	025-85	1984	13.99	RTH	126	126	
Old Coach Square	729-749-6796	007-75	1978	11.25	RTH	74	74	
Olde Gayton	732-753-3332	023-84	1982	11.22	RTH	68	68	
Pemberton	750-746-0872	102-76	1974	9.03	RTH	81	81	
Ridgefield Green Townhomes	737-750-6895	2016-00559	2019	7.58	RTHC	66	66	REZ2016-00010
Ruxton	750-754-5631	082-84	1982	14.38	RTH	100	100	
Shire Place	739-754-5421	2012-00391	2014	6.71	RTHC	45	45	C-27C-06
Skipwith Green	761-750-8377		1972	4.30	RTH	60	60	
Stony Run	744-752-9321	061-86	1980	33.25	RTHC	183	183	C-78C-78
Sussex Square	734-747-7787	043-89	1979	16.85	RTH	87	87	
Sussex Wood	737-749-1457	038-93	1982	41.25	RTHC	215	215	C-66C-83
Townes at Ridgefield	733-751-1026	2013-00423	2015	2.22	R-5	27	27	
Townes of Quail Woods	734-748-6963	083-85	1984	12.71	RTHC	99	99	C-26C-83, C-70C-79
Tuckahoe Village West	732-748-7407		1971	7.20	RTH	58	58	
Waterford Rhye	748-742-8105	155-86	1987	9.59	RTHC	54	54	C-59C-85
Windsor Park	732-748-0084		1973	18.61	RTH	153	153	

<i>Development</i>	<i>GPIN</i>	<i>POD #</i>	<i>Year Built</i>	<i>Acreage</i>	<i>Zoning</i>	<i>Built Units</i>	<i>Total Units</i>	<i>Rezoning Case</i>
--------------------	-------------	--------------	-------------------	----------------	---------------	--------------------	--------------------	----------------------

## **Tuckahoe**

### **Townhouse**

Under  
Construction

Shire Walk	739-754-7182	2015-00173		7.83	R-6C	33	114	REZ2021-00025
------------	--------------	------------	--	------	------	----	-----	---------------

**Total Tuckahoe Townhouse Developments = 26**

**387.39**

**2,649**

**2,730**

### **Tuckahoe Summary**

**Total Tuckahoe Multi-Family  
Developments = 73**

**1,057.54**

**10,606**

**10,973**

<i>Development</i>	<i>GPIN</i>	<i>POD #</i>	<i>Year Built</i>	<i>Acreage</i>	<i>Zoning</i>	<i>Built Units</i>	<i>Total Units</i>	<i>Rezoning Case</i>
--------------------	-------------	--------------	-------------------	----------------	---------------	--------------------	--------------------	----------------------

## **Varina**

### **Apartment**

#### *Existing*

Audubon Village	817-716-1782	014-99	2001	14.78	R-5	214	214	
Bellsun Apartments	823-722-0640	032-71	1974	4.27	R-5	62	62	
Bickerstaff Crossing	804-708-1236	2019-00215	2022	5.07	R-5	60	60	
Carter Woods	807-723-6707	006-02	2004	13.38	Mixed	152	152	C-4C-02
Cedarwood Manor	827-719-2142	018-72	1979	11.06	R-5	152	152	
Country Place Apartments	813-726-7018	075-78	1979	11.27	R-5	102	102	
Coventry Gardens	818-725-8012	002-70	1970	12.49	R-5	176	176	
Creek Wood Townhomes	826-722-4717	040-06	1974	8.00	R-5	100	100	
Darby House	804-710-5328	012-04	2006	7.47	R-5	108	108	
East 51 at Rocketts Landing	797-712-6941	2011-00212	2018	1.29	UMUC	156	156	C-55C-04
Gerwyn Manor	818-713-3706	103-85	1968	17.51	R-5	229	229	C-31C-85
Glenns at Millers Lane	811-716-6606	080-98	1998	8.27	R-6	144	144	C-10C-96
Henrico Arms	804-711-0341	043-72	1974	19.58	R-5	232	232	
Highland Manor	821-724-6204		1948	3.19	R-4	34	34	
Highland Woods	822-722-3727		1969	7.58	R-5	114	114	
Highlands Townhomes	821-722-6607		1972	2.88	R-5	41	41	
Honey Brook	811-718-9908	023-80	1982	8.83	R-5	128	128	
Jackson Square	822-729-3115		1977	2.59	R-5	14	14	
Kingsridge Apartments	809-725-1891	2016-00423	2019	19.92	R-5	168	168	
Lakefield Mews	811-717-9163	006-04	1990	31.27	R-5	395	395	C-33C-86, C-18C-88



<i>Development</i>	<i>GPIN</i>	<i>POD #</i>	<i>Year Built</i>	<i>Acreage</i>	<i>Zoning</i>	<i>Built Units</i>	<i>Total Units</i>	<i>Rezoning Case</i>
<b>Varina</b>								
<b>Apartment</b>								
Laurel Pines	814-716-7303	003-86	1988	6.38	R-6	120	120	
Lawndale Farms	812-715-1020		1965	6.45	R-5	50	50	
Newbridge Square	818-725-4655	002-83	1984	0.51	R-5	7	7	
Newbridge Village	818-724-4934	128-77	1981	11.57	R-5	152	152	
Oakland Village Townhouse Apartments	803-707-6387	023-76	1978	9.44	R-5	100	100	
Oakmeade Apartments	825-721-8368	019-70	1972	7.50	R-5	100	100	
Reflections	813-717-2321	015-01	2003	13.28	R-5	104	104	C-67C-00, C-16C-01
Rocketts Landing Block 17	797-712-4379	2017-00293	2021	0.70	UMUC	127	127	C-055C-04
Sandston Plateau Senior Apartments	831-715-9157	104-00	2006	19.82	R-5	100	100	
Sandston Woods	837-713-7885	041-78	1982	8.27	R-5	64	64	
Seelmann Apartments	821-725-9186		1971	0.39	R-5	5	5	
Summerdale	818-725-1306	054-02	2005	9.66	R-5	124	124	
Townhomes of Oakleys	816-716-9044	023-76	1974	11.15	R-5	160	160	
Villas at Oakland Chase	807-705-0144	093-02	2007	25.40	R-5C	180	180	C-64C-02
Wellington Place	832-713-6890	107-89	1991	14.74	R-5	200	200	
Williamsburg Village	804-710-7779	022-72	1977	9.65	R-5	175	175	
Woodlands Townhouse Co-Op	803-708-5524	023-76	1979	12.30	R-5	100	100	
<b>Proposed</b>								
Fulton Yard	798-713-3911	2020-00067		3.03	R-6C		410	REZ2019-00011
<b>Total Varina Apartment Developments = 38</b>				<b>380.94</b>		<b>4,649</b>	<b>5,059</b>	

<i>Development</i>	<i>GPIN</i>	<i>POD #</i>	<i>Year Built</i>	<i>Acreage</i>	<i>Zoning</i>	<i>Built Units</i>	<i>Total Units</i>	<i>Rezoning Case</i>
<b>Varina</b>								
<b>Condominium</b>								
<i>Existing</i>								
Highland Point	820-726-4301		1965	2.36	R-5	33	33	
Jackson Pointe	822-728-2889	003-72	1977	3.69	R-5	38	38	
Rockett's Landing Condos	797-712-4214	025-05	2007	9.83	UMUC	361	361	C-55C-04
Wynfield	817-723-5419	019-73	1975	1.62	R-5	50	50	
<i>Proposed</i>								
Gateway at Landmark	838-713-4773	2022-00438		54.20	Mixed		72	REZ2022-00009
<b>Total Varina Condominium Developments = 5</b>				<b>71.70</b>		<b>482</b>	<b>554</b>	

### **Townhouse**

<i>Existing</i>								
Easthampton	822-722-0714	066-06	2022	6.57	RTHC	44	44	C-23C-06
Fairlawn Townhomes	826-720-8624	053-74	1971	53.92	RTH	257	257	
Foxhill	810-720-1223	006-81	1974	15.43	RTH	129	129	
Ironwood	817-723-6846	009-83	1980	9.58	RTH	86	86	
Kingsridge Townhouses	809-726-0030	030-07	2008	11.54	R-5	47	160	
Lee Terrace	822-728-9692		1974	6.28	RTH	50	50	
New Market Village	812-701-2146	054-07	2010	22.96	RTHC	117	117	C-79C-05
Taylor Green	832-714-3739	2021-00242	2023	7.84	Mixed	45	45	REZ2014-00045
Townes at Oakleys Bluff	816-721-9466	2011-00309	2024	28.67	RTHC	134	134	C-28C-02, C-1C-11
Viviana Hall	818-722-1580		1973	12.00	RTH	96	96	

<i>Development</i>	<i>GPIN</i>	<i>POD #</i>	<i>Year Built</i>	<i>Acreage</i>	<i>Zoning</i>	<i>Built Units</i>	<i>Total Units</i>	<i>Rezoning Case</i>
--------------------	-------------	--------------	-------------------	----------------	---------------	--------------------	--------------------	----------------------

## **Varina**

### **Townhouse**

Westover Pines	815-728-9692	051-04	2006	3.90	RTH	35	35	
Woodpost	818-723-3259	053-73	1978	9.40	RTH	82	82	

### **Proposed**

Arcadia Townhomes	810-693-7671	2023-00400		49.87	SMX-PD		43	REZ2022-00026
Landmark	836-713-7564	2021-00333		13.25	RTHC		177	REZ2020-00015
Parkside Townes	834-713-3612	2022-00475		30.76	RTHC		123	REZ2021-00066
Ridings at Warner Farm	833-682-5297	2021-00548		232.26	Mixed		212	C-10C-12
Steeple Chase	809-724-5973	025-07		13.49	R-5AC		18	C-20C-06

### **Under Construction**

Rockett's Landing Townhouses	797-713-5534	025-05		9.83	UMUC	138	149	C-55C-04
------------------------------	--------------	--------	--	------	------	-----	-----	----------

**Total Varina Townhouse Developments = 18**

**537.55**

**1,260**

**1,957**

### **Varina Summary**

**Total Varina Multi-Family Developments = 61**

**990.18**

**6,391**

**7,570**

### **County Summary**

**Total Countywide Multi-Family Developments = 368**

**6,005.47**

**55,088**

**61,899**

## *Multi-Family Report - 2024 - Summary by District*

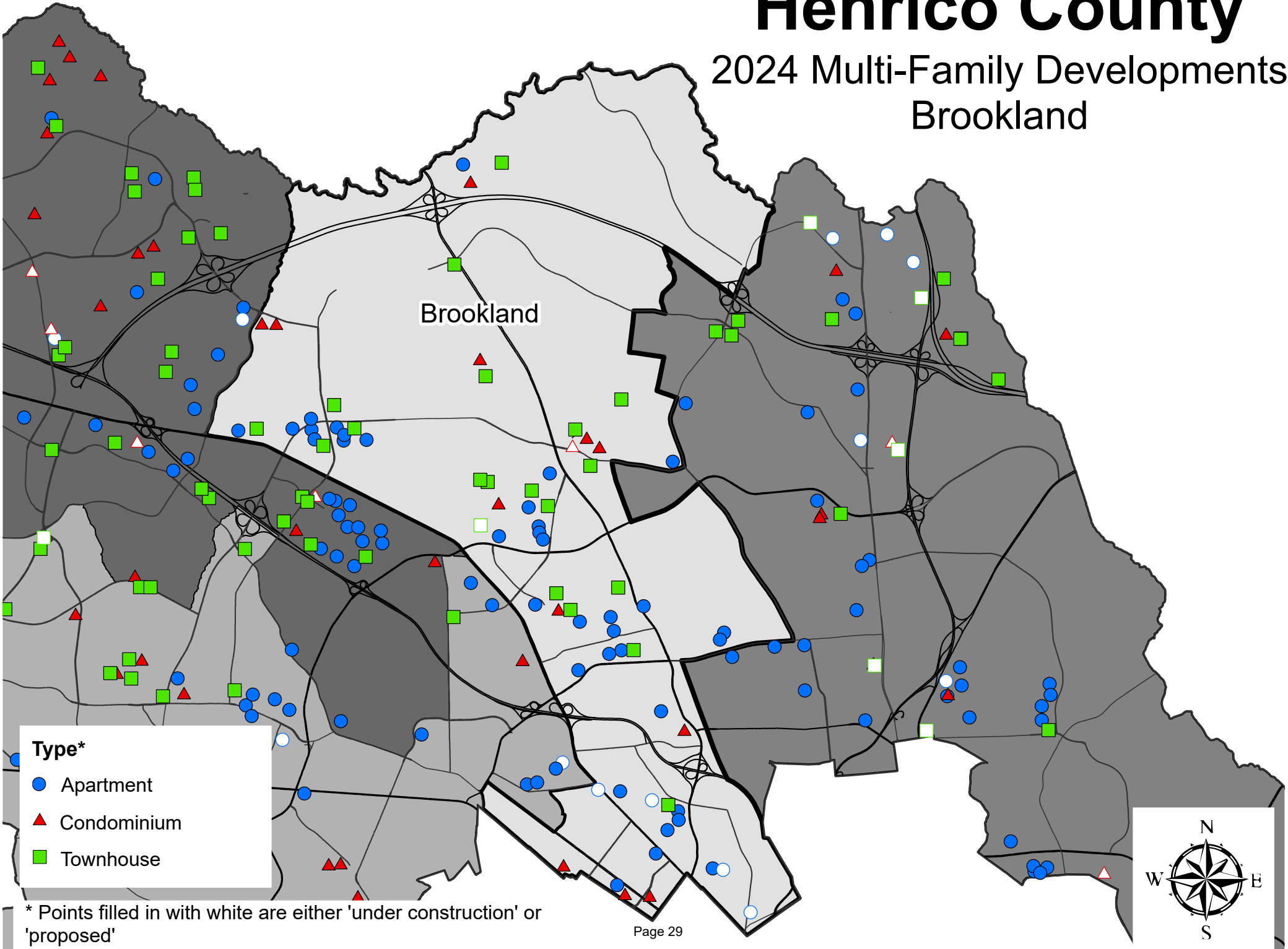
<i>District</i>	<i>Type</i>	<i>Developments</i>	<i>Built Units</i>	<i>Total Units</i>
Brookland				
	Apartment	42	8,828	10,161
	Condominium	16	2,341	2,437
	Townhouse	20	2,883	2,915
	<b>District Total</b>	<b>78</b>	<b>14,052</b>	<b>15,513</b>
Fairfield				
	Apartment	46	7,802	9,135
	Condominium	9	1,082	1,455
	Townhouse	24	1,919	2,683
	<b>District Total</b>	<b>79</b>	<b>10,803</b>	<b>13,273</b>
Three Chopt				
	Apartment	35	9,791	10,510
	Condominium	12	831	1,419
	Townhouse	30	2,614	2,641
	<b>District Total</b>	<b>77</b>	<b>13,236</b>	<b>14,570</b>
Tuckahoe				
	Apartment	34	6,636	6,922
	Condominium	13	1,321	1,321
	Townhouse	26	2,649	2,730
	<b>District Total</b>	<b>73</b>	<b>10,606</b>	<b>10,973</b>
Varina				
	Apartment	38	4,649	5,059
	Condominium	5	482	554
	Townhouse	18	1,260	1,957
	<b>District Total</b>	<b>61</b>	<b>6,391</b>	<b>7,570</b>
<b>Grand Total</b>		<b>368</b>	<b>55,088</b>	<b>61,899</b>

## *Multi-Family Report - 2024 - Summary by Type*

<i>Type</i>	<i>District</i>	<i>Developments</i>	<i>Built Units</i>	<i>Total Units</i>
<b>Apartment</b>				
	Brookland	42	8,828	10,161
	Fairfield	46	7,802	9,135
	Three Chopt	35	9,791	10,510
	Tuckahoe	34	6,636	6,922
	Varina	38	4,649	5,059
	<b>Apartment Total</b>	<b>195</b>	<b>37,706</b>	<b>41,787</b>
<b>Condominium</b>				
	Brookland	16	2,341	2,437
	Fairfield	9	1,082	1,455
	Three Chopt	12	831	1,419
	Tuckahoe	13	1,321	1,321
	Varina	5	482	554
	<b>Condominium Total</b>	<b>55</b>	<b>6,057</b>	<b>7,186</b>
<b>Townhouse</b>				
	Brookland	20	2,883	2,915
	Fairfield	24	1,919	2,683
	Three Chopt	30	2,614	2,641
	Tuckahoe	26	2,649	2,730
	Varina	18	1,260	1,957
	<b>Townhouse Total</b>	<b>118</b>	<b>11,325</b>	<b>12,926</b>
<b>Grand Total</b>		<b>368</b>	<b>55,088</b>	<b>61,899</b>

# Henrico County

## 2024 Multi-Family Developments Brookland

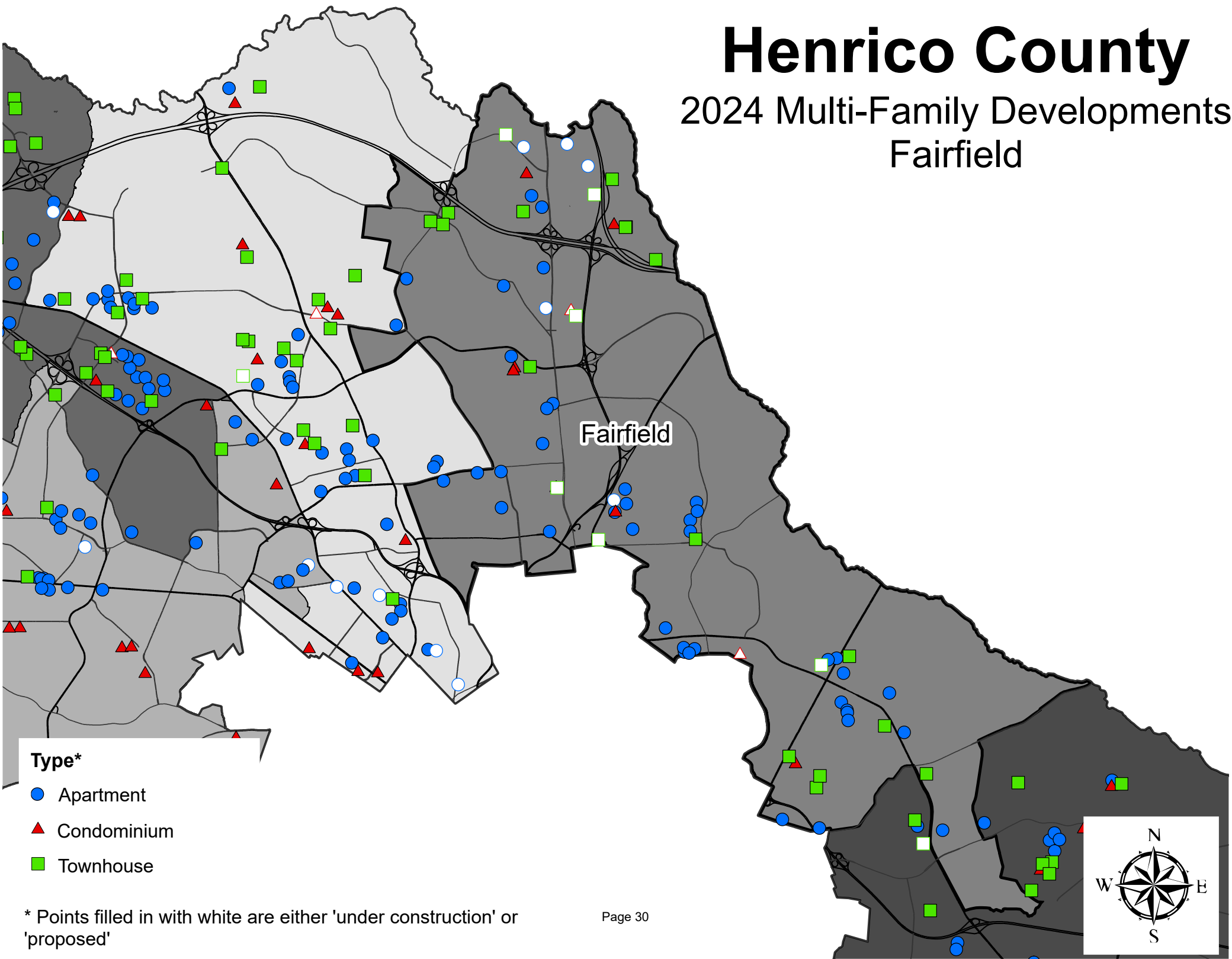


- Type\***
- Apartment
  - ▲ Condominium
  - Townhouse

\* Points filled in with white are either 'under construction' or 'proposed'

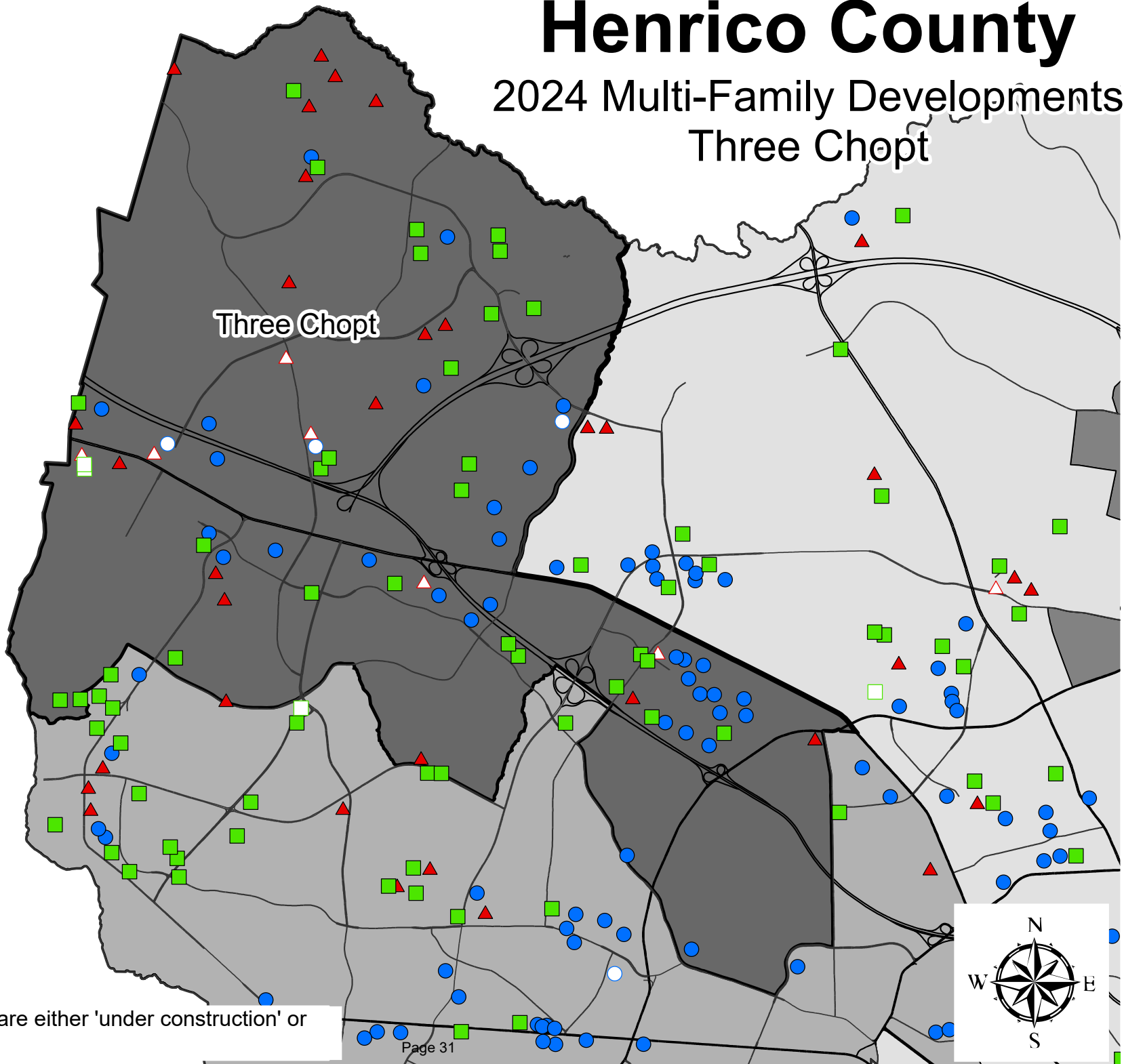
# Henrico County

## 2024 Multi-Family Developments Fairfield



# Henrico County

## 2024 Multi-Family Developments Three Chopt



### Type\*

- Apartment
- ▲ Condominium
- Townhouse

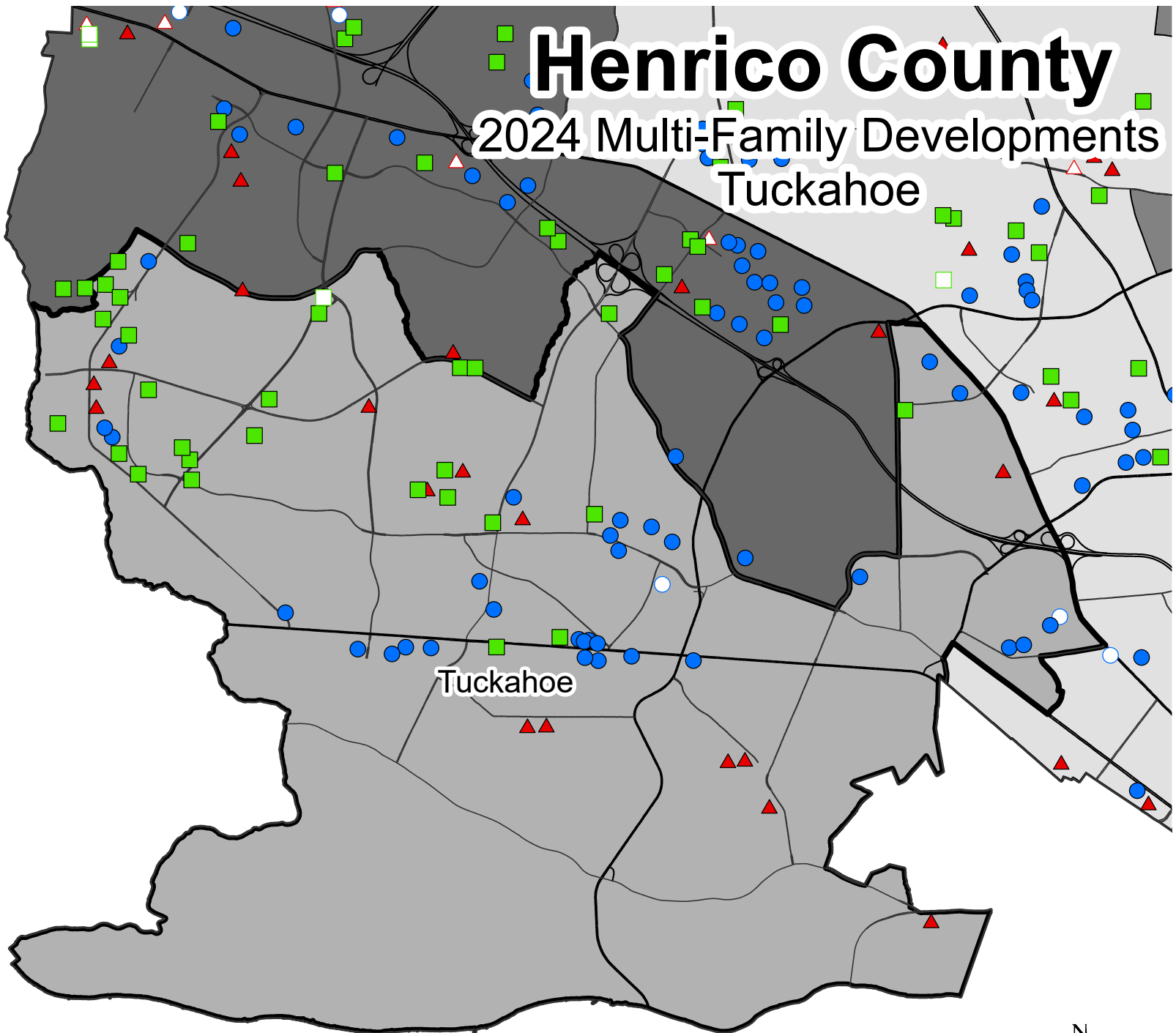
\* Points filled in with white are either 'under construction' or 'proposed'



# Henrico County

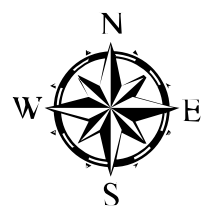
## 2024 Multi-Family Developments

Tuckahoe



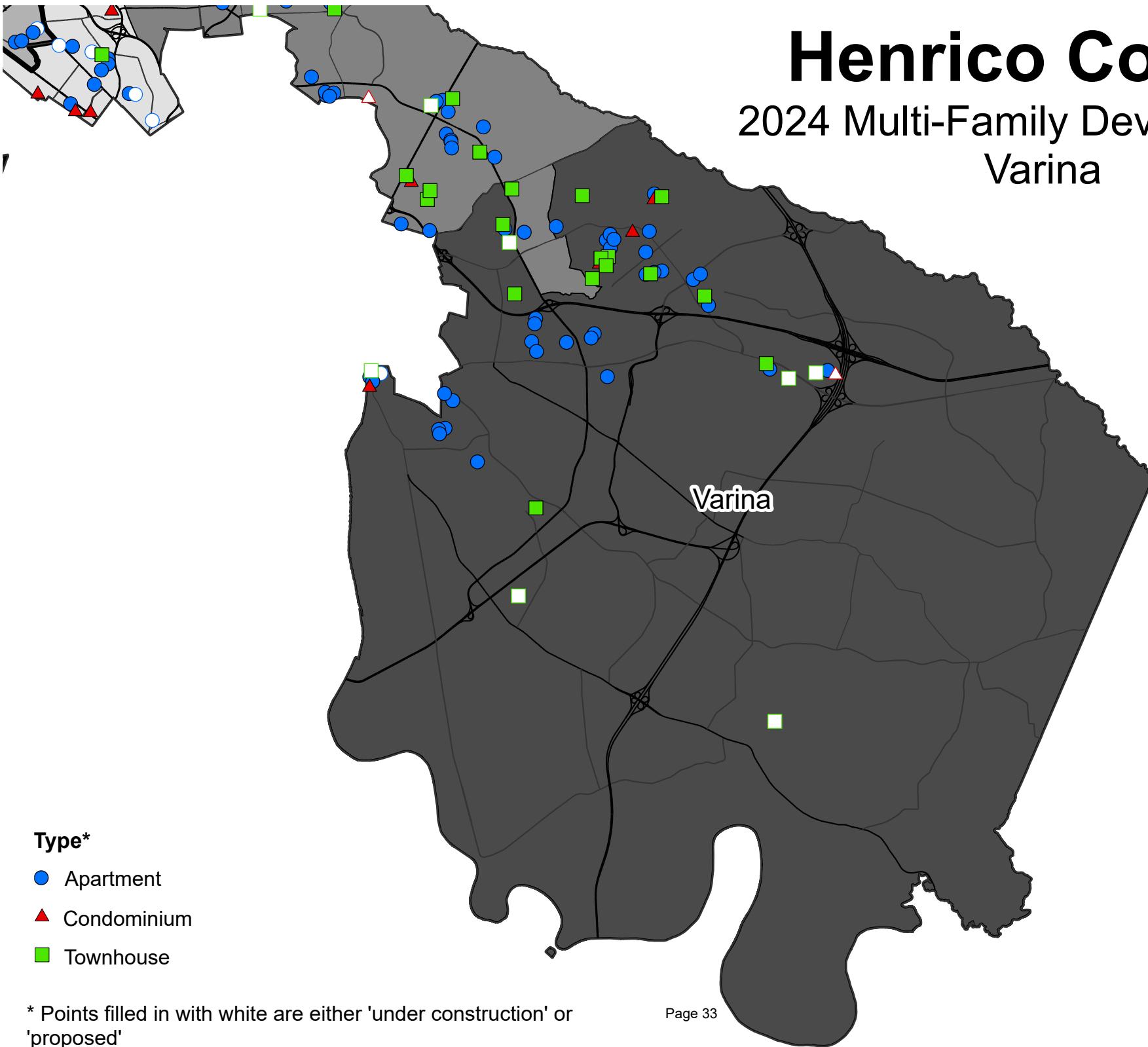
- Type\***
- Apartment
  - ▲ Condominium
  - Townhouse

\* Points filled in with white are either 'under construction' or 'proposed'



# Henrico County

## 2024 Multi-Family Developments Varina



### Type\*

- Apartment
- ▲ Condominium
- Townhouse

\* Points filled in with white are either 'under construction' or 'proposed'

