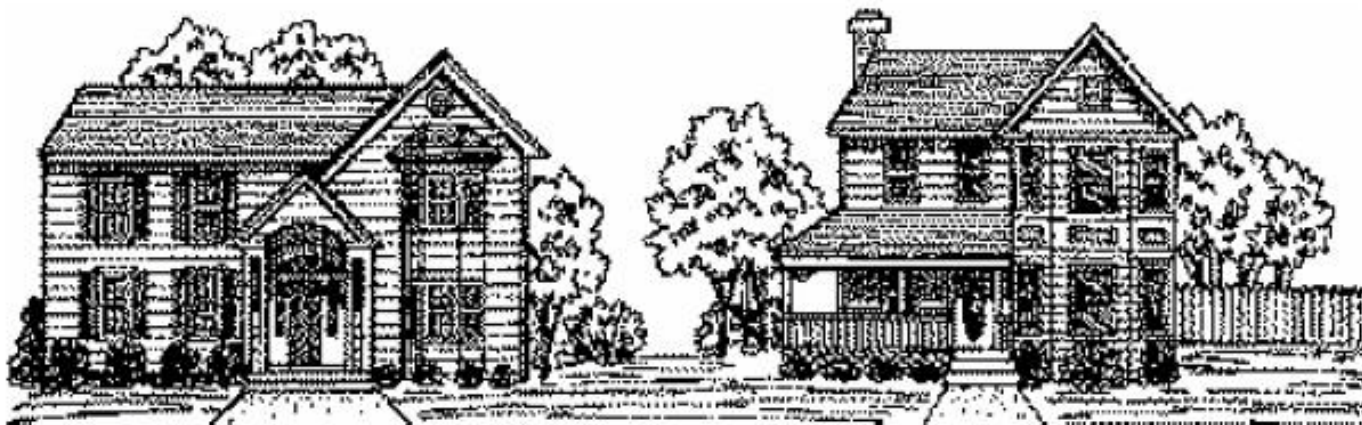




Henrico County
2011

Recorded Single-Family Subdivisions



County of Henrico Planning Department
January 2012

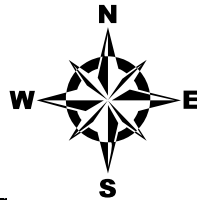
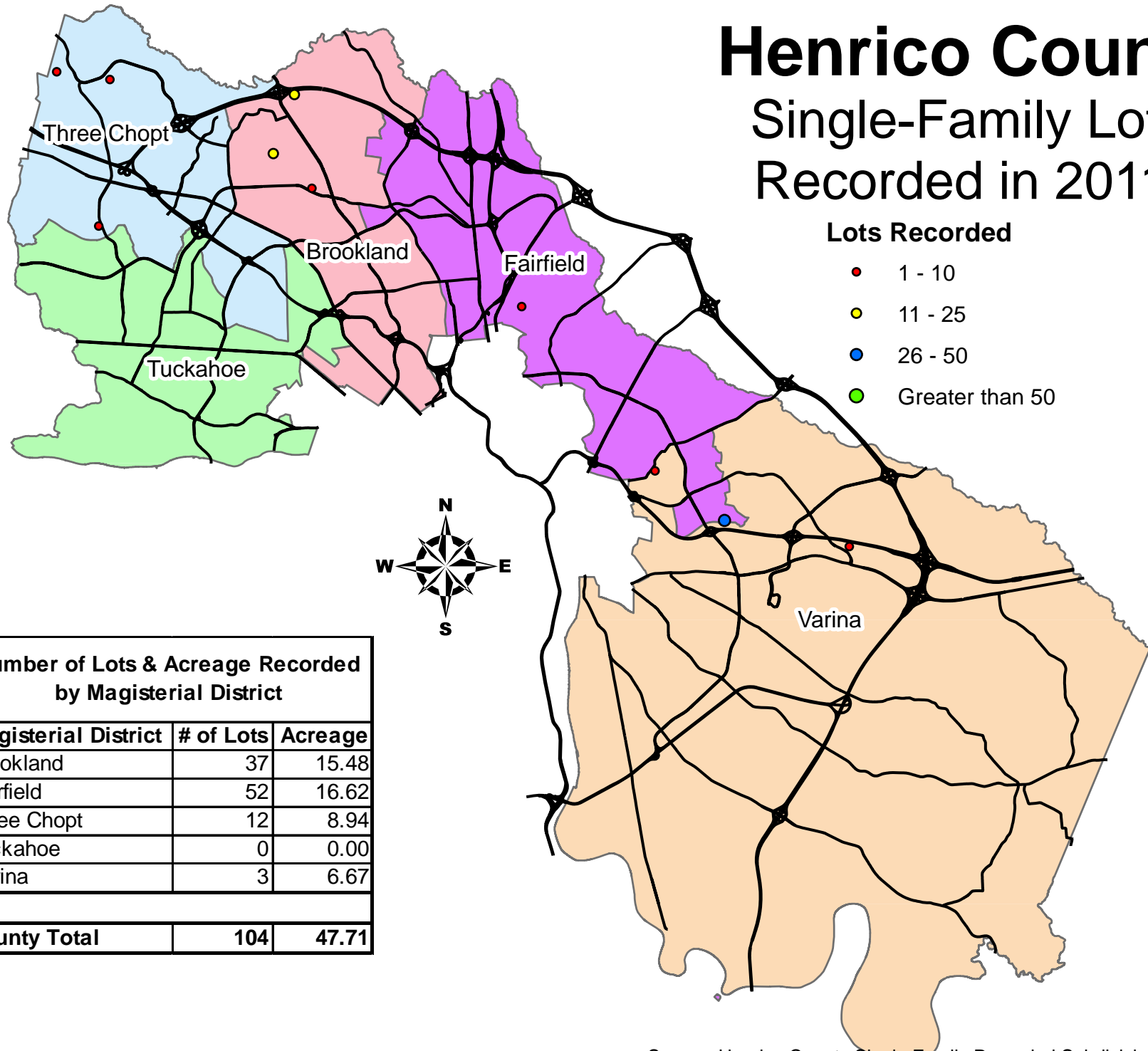
METHODOLOGY FOR THE 2011 RECORDED SINGLE-FAMILY SUBDIVISION REPORT

The *Recorded Single-Family Subdivision Report*, compiled annually by the Henrico County Planning Department, records single-family subdivisions by Magisterial District. The units and acreage recorded in the report account for all units and acreage approved for each section of the subdivisions as recorded with the record of deeds in the Circuit Court Clerk's Office.

The data used to create the reports is derived from Henrico County's Planning Department records of recorded subdivisions. This information is documented by the Henrico County Planning Department after the final plat is recorded in the Circuit Court Clerk's Office.

For more information contact the Planning Department at (804) 501-4602.

Henrico County Single-Family Lots Recorded in 2011



Number of Lots & Acreage Recorded by Magisterial District		
Magisterial District	# of Lots	Acreage
Brookland	37	15.48
Fairfield	52	16.62
Three Chopt	12	8.94
Tuckahoe	0	0.00
Varina	3	6.67
County Total	104	47.71



2011 Recorded Subdivisions

<i>Subdivision</i>	<i>Section</i>	<i>Lot(s)</i>	<i>Acreage in Lots</i>	<i>AVG Lot</i>	<i>Zoning</i>	<i>Case #</i>	<i>Parcel Number</i>	<i>Recorded</i>
Brookland								
Holladay Hill Old Mountain Rd & Benjamin Hill Ct	A	21	7.9900	0.3805	R-3C	C-47C-05	762-772-5052	7 /25/2011
Hungary Creek Nuckols Rd & Francistown Rd	1	12	5.1400	0.4283	R-3C	C-20C-09	759-765-9433	12/16/2011
Mountain Cove Hungary Rd & Mountain Cove Ct		4	2.3480	0.5870	R-2		764-761-6107	11/22/2011
Summary for Brookland (3 Subdivisions)								
Sum		37	15.4780	0.4183				
Fairfield								
McCowin Estates Edgefield St & Edgefield Ct	1	2	0.7800	0.39	R-2AC	C-59C-07, C-10C-10	790-746-1666	11/18/2011
Oakleys Chase S. Laburnum Ave & Thornhurst St	2	50	15.8440	0.3169	R-3C, C-1	C-58C-07	814-720-9252	8 /31/2011
Summary for Fairfield (2 Subdivisions)								
Sum		52	16.6240	0.3197				

<i>Subdivision</i>	<i>Section</i>	<i>Lot(s)</i>	<i>Acreage in Lots</i>	<i>AVG Lot</i>	<i>Zoning</i>	<i>Case #</i>	<i>Parcel Number</i>	<i>Recorded</i>
Three Chopt								
Clays Corner Sunrise Rd & Pump Rd	1	5	1.9300	0.386	R-3C	C-3C-10	738-756-6946	7 /27/2011
Henley Nuckols Rd & Old Wyndham Dr	C	6	6.6680	1.1113	A-1		733-775-5529	11/17/2011
Ketterly at Grey Oaks Nuckols Rd & Grey Oaks Park Rd	2	1	0.3390	0.339	R-2AC	C-15C-03	739-774-8240	1 /20/2011
Summary for Three Chopt (3 Subdivisions)								
Sum		12	8.9370	0.7448				
Varina								
Stony Run Estates Creighton Rd & Stone Dale Dr	D	2	0.7800	0.39	R-3C	C-66C-02	806-726-3963	2 /28/2011
Woodlawn Terrace Link Dr & Algiers Dr	3	1	5.8940	5.8940	R-4		830-717-0339	10/18/2011
Summary for Varina (2 Subdivisions)								
Sum		3	6.6740	2.2247				
Grand Total		104	47.7130	0.4588				

Magisterial District by Year Report

<i>Year</i>	<i>Magisterial District</i>	<i>Lots</i>	<i>Lot Acreage</i>	<i>Average Lot</i>	<i>ROW Acreage</i>	<i>Open Space Acreage</i>
<i>2007</i>						
	Brookland (6 subdivisions)	35	16.9210	0.4835	1.1740	0.0000
	Fairfield (8 subdivisions)	362	128.0640	0.3538	25.5910	30.6940
	Three Chopt (6 subdivisions)	140	83.7360	0.5981	16.4110	18.2200
	Tuckahoe (4 subdivisions)	35	18.0680	0.5162	2.8920	2.2300
	Varina (21 subdivisions)	356	321.5230	0.9032	28.8850	298.2120
Summary for 2007 = 45 subdivisions		928	568.3120	0.6124	74.9530	349.3560
<i>2008</i>						
	Brookland (6 subdivisions)	65	23.8240	0.3665	5.3960	12.7680
	Fairfield (2 subdivisions)	38	8.2594	0.2174	1.9276	1.5535
	Three Chopt (5 subdivisions)	70	29.5480	0.4221	4.6740	3.1870
	Tuckahoe (2 subdivisions)	2	1.5390	0.7695	0.0000	0.0000
	Varina (16 subdivisions)	241	155.8330	0.6466	20.4960	2.4490
Summary for 2008 = 31 subdivisions		416	219.0034	0.5265	32.4936	19.9575

<i>Year</i>	<i>Magisterial District</i>	<i>Lots</i>	<i>Lot Acreage</i>	<i>Average Lot</i>	<i>ROW Acreage</i>	<i>Open Space Acreage</i>
<i>2009</i>						
	Brookland (3 subdivisions)	19	6.0910	0.3206	0.9610	0.1000
	Three Chopt (1 subdivisions)	1	0.5190	0.519	0.0000	1.8980
	Varina (7 subdivisions)	255	242.7464	0.9519	25.9352	14.0676
Summary for 2009 = 11 subdivisions		275	249.3564	0.9068	26.8962	16.0656
<i>2010</i>						
	Brookland (1 subdivisions)	1	1.4100	1.41	0.0600	0.0000
	Fairfield (3 subdivisions)	24	8.4180	0.3507	1.1290	0.0000
	Three Chopt (5 subdivisions)	96	39.0350	0.4066	6.3060	4.9810
	Varina (5 subdivisions)	116	55.5106	0.4785	8.6304	0.6980
Summary for 2010 = 14 subdivisions		237	104.3736	0.4404	16.1254	5.6790
<i>2011</i>						
	Brookland (3 subdivisions)	37	15.4780	0.4183	2.2390	3.9070
	Fairfield (2 subdivisions)	52	16.6240	0.3197	4.3230	44.0590
	Three Chopt (3 subdivisions)	12	8.9370	0.7448	0.4340	0.0210
	Varina (2 subdivisions)	3	6.6740	2.2247	0.0190	0.0000
Summary for 2011 = 10 subdivisions		104	47.7130	0.4588	7.0150	47.9870
<i>Grand Total (2007 - 2010)</i>		1,960	1,188.7584	0.6065	157.4832	439.0451

Henrico County - Recorded Lots by Magisterial District: 2007 - 2011

