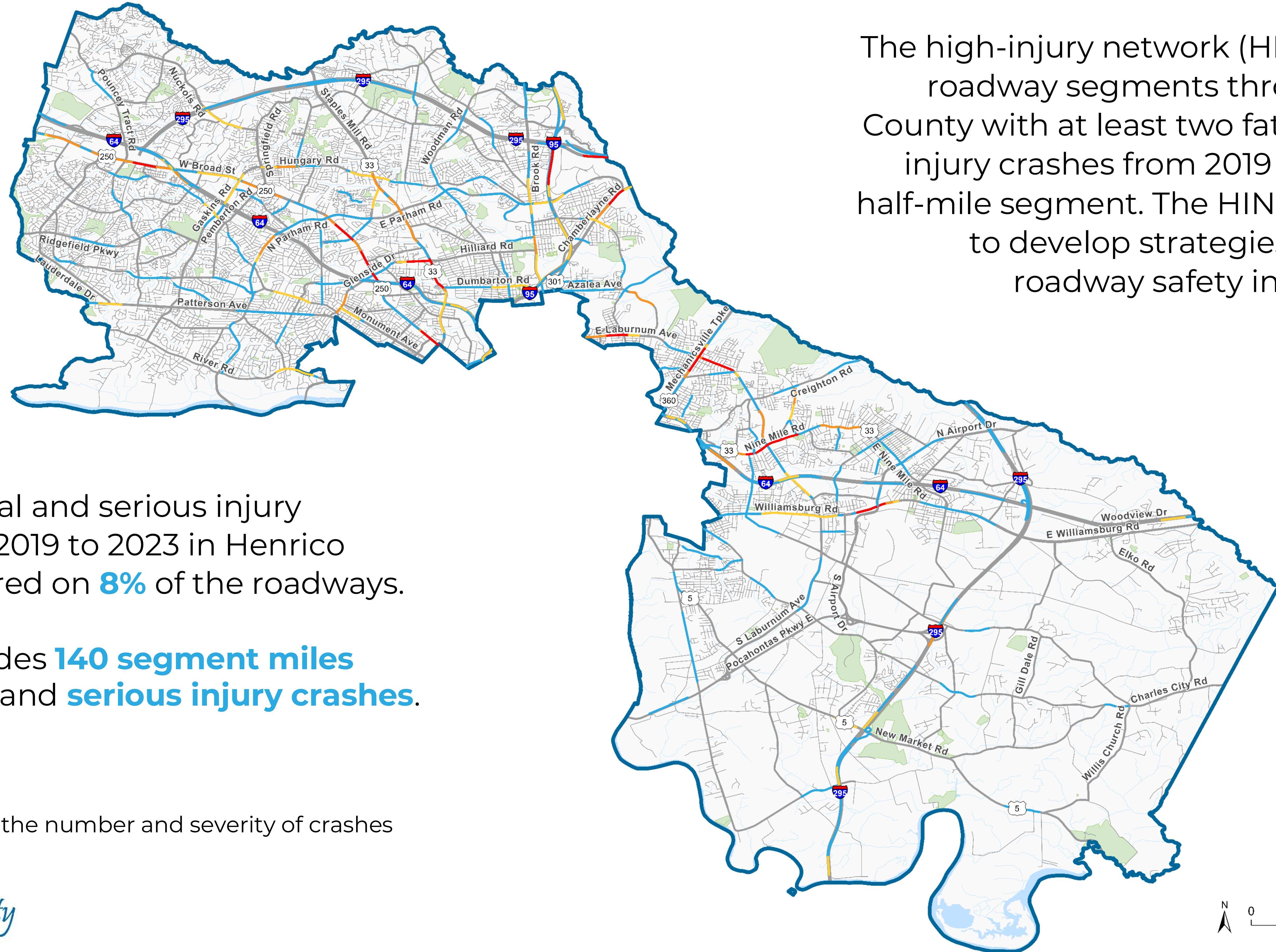


Arrive Alive



High-Injury Network (HIN)

The high-injury network (HIN) identifies roadway segments throughout the County with at least two fatal or serious injury crashes from 2019 to 2023 on a half-mile segment. The HIN will be used to develop strategies to improve roadway safety in the County.



75% of the fatal and serious injury crashes from 2019 to 2023 in Henrico County occurred on **8%** of the roadways.

The HIN includes **140 segment miles** and **772 fatal** and **serious injury crashes**.

*Tiers are based on the number and severity of crashes

HIN Tiers*

- Tier 1
- Tier 2
- Tier 3
- Tier 4